

Air Pollution and Procyclical Mortality

Abstract

Prior research demonstrates that mortality rates increase during economic booms and decrease during economic busts, but little analysis has been conducted investigating the role of environmental risks as a potential mechanism for this relationship. We investigate the contribution of air pollution to the procyclicality of deaths by combining county-level data on overall, cause-specific, and age-specific mortality rates with county-level measures of ambient concentrations of three types of pollutants and the unemployment rate. After controlling for demographic variables and state-by-year fixed-effects, we find a significant positive correlation between pollution concentrations and mortality rates. Controlling for carbon monoxide, particulate matter, and ozone attenuates the relationship between overall mortality and the unemployment rate by a statistically significant (at the 0.1 level or better) 17 percent. The findings are robust to the use of state rather than county level data and to a variety of alternative specifications, although the attenuation of the unemployment-mortality relationship after controlling for pollution is insubstantial when including linear trends. Our results are consistent with those of other studies in the economics and public health literatures measuring the mortality effects of air pollution and suggest that changes in environmental risks are likely to explain some portion of the observed procyclical fluctuation in mortality.

Keywords: Pollution; Health; Mortality; Business Cycles

JEL Codes: Q53; I10; E32

September 2015

Garth Heutel
Georgia State University and NBER
gheutel@gsu.edu

Christopher J. Ruhm
University of Virginia and NBER
ruhm@virginia.edu

We thank Matthew Neidell, Nicholas Sanders, and seminar and conference participants at UNCG, Appalachian State University, NBER, the 2012 AERE Summer Conference, and the 2013 ASSA meetings for helpful comments, and Kalee Burns, Will Mautz, Stephanie Norris, and James Small for excellent research assistance. Ruhm gratefully acknowledges financial support for this research from the University of Virginia Bankard Fund.

Health is conventionally believed to deteriorate during macroeconomic downturns. However, substantial research conducted over the last decade suggests that physical health instead *improves* when the economy temporarily weakens. In particular, there is strong evidence of a procyclical variation in mortality, but the mechanisms for this relationship are poorly understood. Early studies on this topic emphasized the role of individual behaviors, which may become healthier during slack economic periods because of increases in available time and reductions in income; however, recent analyses provide more mixed evidence on whether this occurs. There is also a strong but limited role for changes in driving behavior and traffic fatalities, but other environmental risk factors have not been studied.

Air pollution, which increases when the economy strengthens and so may be a source of procyclical fluctuations in mortality, has not been investigated in this context, probably because the data required to do so are difficult to analyze. This study provides a first step towards filling this gap by examining the extent to which controlling for pollution attenuates the estimated coefficient on unemployment rates (the proxy of macroeconomic conditions) in models that are otherwise similar to those used in previous related analyses. Specifically, using county-level data for 1982-2009, we incorporate information on ambient concentrations of three air pollutants – carbon monoxide (CO), particulate matter less than 10 microns in diameter (PM10), and ozone (O₃) – into models that examine total, cause-specific, and age-specific mortality, while also controlling for county fixed-effects and unemployment rates, state-specific year effects and supplementary location-specific demographic characteristics.

We substantiate prior findings that mortality is procyclical over the period studied: a one percentage point increase in unemployment is associated with a 0.35% decrease in the total mortality rate. However, after controlling for pollution, the estimated effect declines to 0.28%;

this difference is statistically significant at the 10% level. All three pollutant concentrations exhibit a procyclical variation. CO is estimated to strongly increase mortality, and the inclusion of CO attenuates the estimated macroeconomic effect.¹ However, the high collinearity of the three pollution measures prevents us from making confident claims regarding differential effects between the pollutants. A one-standard deviation increase in the CO concentration is associated with a 1.6% increase in the death rate, after controlling for county and year effects, demographic characteristics and PM10 and O₃ levels (but not unemployment rates), and its inclusion in the full model attenuates the estimated unemployment coefficient by around 15%. This attenuation is insubstantial in models that include linear trends, though we argue that the inclusion of these trends may be a misspecification, and that controlling for state-by-year effects is preferable.

The results for specific causes and ages of death provide suggestive evidence that environmental risks, like pollution, provide a mechanism for at least some of the procyclical fluctuation in mortality. In particular, previous research suggests pollution has a significant effect on deaths from respiratory and cardiovascular disease, and this is what we also find.² In our estimates, a one-standard deviation increase in the CO concentration is associated with a 3.0% rise in the respiratory mortality rate, and the inclusion of the pollution concentrations in our main model eliminates much of the correlation between respiratory fatalities and unemployment rates. Conversely, suicides are countercyclical and unaffected by pollution. The results for age-specific mortality are also revealing. Deaths are estimated to be procyclical for all age groups except those younger than 20, but only significantly so for > 84 year olds. However, CO concentrations are associated with increased mortality for all groups. As a result, the

¹ The effect from CO only is consistent with results from Currie and Neidell (2005), Schlenker and Walker (2011), and Arceo et. al. (forthcoming).

² For instance, Clancy et. al. (2002) identifies an association between particulate matter concentrations and respiratory and cardiovascular deaths, and Peters et. al. (2004) links traffic pollution exposure to heart attacks.

procyclicality of fatalities is attenuated for these age groups – with a particularly strong but imprecisely measured reduction for the very old. We also measure the cyclicity of pollution itself, and we find that both PM10 and CO are significantly procyclical. A one percentage-point increase in the unemployment rate is correlated with a 0.06 standard deviation drop in PM10 concentrations and a 0.04 standard deviation decrease in CO concentrations.

While these results are generally robust to alternate specifications, including running the analysis at the state-year level rather than the county-year level, several important caveats should be noted. As mentioned, it is difficult to identify differential effects between the three pollutants, and the attenuation of the unemployment coefficient after controlling for pollution is sensitive to the inclusion of linear trends. As described below, there are also concerns about bi-directional causality and migration bias that we cannot fully address using the available data.

I. Background

Following Ruhm (2000), many studies examine the relationship between macroeconomic conditions and health by analyzing data for multiple locations and points in time. Panel data techniques can be used to control for many potential confounding factors. In particular, location-specific determinants of health that remain constant over time are easily accounted for, as are factors that vary over time in a uniform manner across locations. Death rates are useful to study because mortality represents the most severe negative health outcome, is objective and well measured, and diagnosis generally does not depend on access to the medical system (in contrast to many morbidities). Prior research provides strong evidence of a procyclical fluctuation in total mortality and several specific causes of death, using disparate samples and time periods. A one-percentage point increase in the unemployment rate (the most common macroeconomic

proxy) is typically associated with a 0.3% to 0.5% reduction in overall mortality, corresponding to an elasticity of $-.02$ to $-.05$, with significantly larger elasticity estimates sometimes obtained.³

In explaining why health improves during economic downturns, researchers have emphasized the role of changes in lifestyles, hypothesizing that increased availability of non-market “leisure” time makes it less costly for individuals to undertake health-producing activities such as exercise and cooking meals at home, while lower incomes are associated with reductions in unhealthy lifestyles like smoking and drinking. The data provide some support for these mechanisms. There is strong evidence that alcohol *sales* are procyclical and several studies (Ruhm, 1995; Freeman, 1999; Cotti & Tefft, 2011) find that alcohol-involved vehicle mortality declines in such periods. Cardiovascular fatalities, which are strongly influenced by lifestyles, are also procyclical (Ruhm, 2000; Neumayer, 2004; Miller, et al., 2009).

Other behaviors may also become healthier when economic conditions weaken. Ruhm (2005) finds that severe obesity, smoking, and physical inactivity decline, with especially large reductions in multiple risk factors. Gruber & Frakes (2006) and Xu (2013) provide further evidence of a procyclical variation in smoking. Ruhm (2000) shows that the consumption of dietary fat falls while the intake of fruits and vegetables rises. Consistent with these patterns, evidence that higher time prices correlate with increased obesity has been provided for adults and children (e.g. Courtemanche, 2009).

However, changes in health behaviors are probably not the sole, or necessarily the most important, mechanism for procyclical variations in mortality. Miller et al. (2009) find that working-age adults are responsible for relatively little of the cyclical variation in deaths, suggesting that behavioral responses to changes in labor market conditions are unlikely to be a

³ Ruhm (2012) provides a detailed discussion of this evidence.

dominant factor. Some research also raises questions about the strength or direction of the lifestyle changes related to obesity (Böckerman et al., 2006; Charles & DiCicca, 2008; Arkes, 2009), physical activity (An & Liu, 2012; Colman & Dave, 2013) and alcohol use (Dávalos et al., 2011).

Other risk factors provide potential alternative explanations for why health may improve during economic downturns. For example, traffic fatalities have been widely studied, with substantial and robust evidence provided that a one-point increase in unemployment reduces such deaths by 1% to 3% (see Ruhm, 2012, for citations). While these studies explore the mechanisms behind the procyclicality of mortality, no study attempts to quantify how much of the procyclicality can be explained by one particular mechanism.

Another joint product of economic activity, air pollution, also presents health risks, especially for infants or senior citizens who do not participate in the labor force. A large economics literature examines the relationship between pollution exposure and health, accounting for potential confounders (Graff Zivin and Neidell 2013). Several studies link pollution to infant mortality. Currie and Neidell (2005) find that reductions in carbon monoxide in California over the 1990s saved approximately 1000 infant lives. Chay and Greenstone (2003) use data from the 1981-1982 recession to show that a 1-percent drop in total suspended particulates leads to a 0.35-percent reduction in infant mortality; TSP reductions nationwide from 1980-1982 led to 2500 fewer infant deaths. Knittel et al. (2011), Currie et al. (2009), and Greenstone and Hanna (2014) also find significant effects of pollution on infant deaths.

In addition to these economics papers, the epidemiological literature has linked pollution to mortality. Pollution is an established contributor to cardiovascular (Peters et al., 2004) and respiratory (Clancy et al. 2002) deaths. Mustafic et al. (2012) provides a meta-analysis linking

both carbon monoxide and particulate matter to heart attack incidence, and Wellenius et al. (2012) tie particulate matter to strokes. Although pollution is correlated with mortality, it has not yet received attention in empirical research examining the effects of macroeconomic fluctuations on mortality. This analysis takes a first step towards rectifying this shortcoming.

II. Research Design

We analyze the relationship between macroeconomic conditions, air pollution, and mortality rates, using panel data methods that, following Ruhm (2000), have become standard in this literature.⁴ Studies based on aggregate data usually estimate some variant of:

$$M_{jt} = \alpha_j + X_{jt}\beta + E_{jt}\gamma + \lambda_t + \epsilon_{jt}, \quad (1)$$

where M_{jt} is a health outcome (the log of the mortality rate) in location j at time t , E measures macroeconomic conditions, X is a vector of covariates, α is a location-specific fixed-effect, λ a general time effect, and ϵ is the regression error term. Following most previous research, the natural log (rather than level) of mortality rates is used.

Unemployment rates are the most common primary proxy for macroeconomic conditions, and the one focused upon here, although we also discuss results using an alternative measure. The supplementary characteristics include controls for the age-structure of the local population, and the shares in specified education and race/ethnicity subgroups, as well as location-specific measures of temperature and precipitation. The analysis covers 1982-2009. Detailed pollution data are unavailable prior to 1982, as is information on some of the covariates after 2009 (at the time of analysis). Our main analysis is at the county-year level; however we also provide a

⁴ Although alternative estimation procedures have some desirable features, we use “standard” models to maximize the comparability of our results to those obtained in previous research.

corresponding state-level analysis in Appendix B.⁵ We report robust standard errors that are clustered at the state level.

The year effects, λ_t in equation (1), hold constant determinants of death that vary uniformly across locations over time (e.g. advances in widely used medical technologies or behavioral norms); the county-fixed-effects, α_j , account for differences across locations that are time-invariant (such as persistent lifestyle disparities between residents of counties in Nevada and Utah). We include state-by-year fixed effects, allowing the year-effects λ_t to vary across states. The impact of the macroeconomy is then identified from within-location variations relative to the changes in other areas.⁶ Although unemployment rates are the *proxy* for macroeconomic conditions, the mortality effects need not be restricted to individuals changing employment status. For instance, increases in air pollution due to growth in economic output may particularly affect the health of infants and senior citizens, who are not in the labor force.

The primary econometric strategy is to first estimate equation (1), with $\hat{\gamma}$ providing the overall macroeconomic effect, and then to run the augmented model:

$$M_{jt} = \alpha'_j + X_{jt}\beta' + E_{jt}\gamma' + A_{jt}\delta' + \lambda'_t + \varepsilon'_{jt}, \quad (2)$$

where A_{jt} is the ambient pollution level at location j and time t . In this specification, $\hat{\gamma}'$ shows the partial effect of macroeconomic conditions after controlling for pollution levels, and the degree of attenuation, relative to $\hat{\gamma}$ from equation (1), indicates the extent to which pollution is a mediating factor in explaining the overall macroeconomic effect. The direct impact of pollution,

⁵ Recent related research using county or MSA level data includes Charles & DeCicca (2008) and An & Liu (2012).

⁶ The impact of national business cycles, which could differ from more localized fluctuations, is absorbed by the time effects. Discussions of macroeconomic effects therefore refer to changes within locations rather than at the national level.

which is hypothesized to raise mortality, is estimated as $\hat{\delta}'$ in equation (2).⁷ This is likely to provide a lower bound on the true effect to the extent that pollution is only partially controlled for or is measured with error. For this reason, equation (2) is also estimated with the simultaneous inclusion of multiple pollution measures, while recognizing that multicollinearity may limit our ability to interpret the coefficients obtained for the individual pollution variables.⁸ We also estimate first-stage models, where pollution levels are the dependent variables and unemployment rates the key regressors, to confirm our hypothesis of a positive relationship between economic activity and pollution. Our estimates are for a log-linear model (the dependent variable is the log of the mortality rate and the right-hand-side variables are in levels) because this is consistent with most previous estimates and is likely to be the most appropriate specification.⁹

We test the significance of the change in the coefficient on unemployment, between equations (1) and (2) using two methods. First, we calculated Wald statistics testing whether the unemployment coefficients differed in the models with and without pollution controls (using the Stata `suest` command). Second, we use the z-test statistic introduced by Gelbach (forthcoming) to test the significance of this difference.¹⁰

⁷ This specification will not pick up nonlinearities in the relationship between mortality and pollution. We are limited in how finely we can measure the shape of the dose-response function because of the aggregated nature of our data; however, we explore the effects of including quadratic terms of pollution in Table 7.

⁸ The correlation coefficient between our state-level measures of CO and PM10 is 0.582; between O₃ and PM10 it is 0.293; and between CO and O₃ it is 0.084.

⁹ In a log-linear specification, pollution changes are assumed to have common *proportional* rather than *absolute* effects on mortality (i.e. a one percent pollution increase is assumed to increase mortality by given percentage, whatever its initial level). By contrast, if mortality were specified in levels, an increase in pollution from 100 to 101 units would have the same effect as an increase from one to two units, which seems unlikely. In Table 7 we investigate the robustness of our results to these and other alternate specifications.

¹⁰ The primary purpose of the Gelbach (forthcoming) study is a critique of the use of sequentially adding control variables to a regression. While this does not apply to our analysis, the estimator that he provides (along with the Stata command `b1x2`) is an appropriate test. Intuitively, this approach runs the "base" regression (without pollution), then the "full" regression (with pollution), then provides a consistent estimate of the covariance matrix for the difference in the coefficient vector of the variables that are in both regressions (including unemployment). It is based on a Hausman test from a simple identity linking the base- and full-regression coefficients: $\hat{\beta}_1^{base} = \hat{\beta}_1^{full} +$

Several potential issues with our estimation procedure deserve mention. First, including an endogenous variable (pollution) that is in the causal pathway from unemployment to mortality introduces a potential “bad control” bias (Angrist and Pischke, 2009, p. 64-66). The issue here is that the coefficient estimated in the regression captures both the causal effect as well as potential selection bias. The latter occurs if, holding economic conditions constant, there are omitted determinants of mortality that are correlated with pollution levels, which are in turn linked to unemployment rates.¹¹ For instance, with cross-sectional data, it is easy to imagine how such confounding factors might be correlated with emissions. Though it cannot be measured, the selection bias is likely to be insubstantial given our use of panel data. We use extensive controls, including county fixed effects and state-by-year fixed effects that capture variations in the pollution-specific treatment effects due to time-invariant location differences and all time-specific inter-state variations.

There is also potential for bi-directional causality. Reduced economic activity, proxied by the unemployment rate, almost certainly decreases emissions. However, there is also some evidence that pollution negatively affects labor productivity (Graff Zivin & Neidell, 2012) and work hours (Hanna and Oliva, 2015). Pollution impacts on unemployment rates have not, to our knowledge, been examined but are possible. Our prior is that these effects are small and

$(X_1'X_1)^{-1}X_1'X_2\hat{\beta}_2$, where X_1 are the controls in both regressions and X_2 are the controls in just the full specification. Derivation of the covariance matrix is provided in Gelbach (forthcoming), Appendix B.

¹¹ To show this, adopting Angrist and Pischke’s (2009, p. 64-66) notation: let y_i be the mortality rate, c_i be a binary indicator for unemployment rate (e.g. $c_i = 1$ represents low unemployment/good economy), and w_i be pollution. Unemployment then directly affects mortality and pollution according to: $y_i = c_i y_{1i} + (1 - c_i) y_{0i}$ and $w_i = c_i w_{1i} + (1 - c_i) w_{0i}$, where y_{1i} (w_{1i}) is the mortality rate (pollution level) in locality i with low unemployment and y_{0i} (w_{0i}) are corresponding values with high unemployment rates. When regressing mortality on both unemployment and pollution, the unemployment coefficient measures: $E[y_{1i}|w_{1i} = w] - E[y_{0i}|w_{1i} = w] = E[y_{1i} - y_{0i}|w_{1i} = w] + \{E[y_{0i}|w_{1i} = w] - E[y_{0i}|w_{0i} = w]\}$. $E[y_{1i} - y_{0i}|w_{1i} = w]$ is the causal effect of unemployment on mortality. $E[y_{0i}|w_{1i} = w] - E[y_{0i}|w_{0i} = w]$, if non-zero, indicates selection bias. This selection bias cannot be definitively signed, without a fuller understanding of why the effects of pollution might differ in low versus high performing economies.

dominated by the effect of economic activity on pollution, particularly after including the extensive set of covariates.

Finally, our estimates could be vulnerable to migration bias. Migration could affect the estimates in three ways. First, migrants tend to move from areas of higher to lower unemployment rates, and healthy individuals are more likely to migrate than are those in poor health (Halliday, 2007). This will introduce a countercyclical bias in the estimated average mortality effect. Second, these effects may vary with age. While such age-variations have not been extensively studied, Halliday & Kimmitt (2008) offer tentative evidence that among older (≥ 60 year old) men, but not women, migration is concentrated among both the top and bottom (versus the middle) of the health distribution. Since health shocks are most likely to cause death among those already in precarious health, it is possible that the estimated procyclicality of mortality among the elderly could be overstated.¹² Third, migration that is unaccounted for in population estimates will lead to a bias, which may be positive or negative, in the denominator of the mortality rate models. Migration to economically robust regions will lead to a particularly large understatement of population in these areas and an overestimate of the procyclicality of mortality. To mitigate this issue, the data on population estimates, described below, are the most accurate available and take particular account of non-census year population flows. In addition, we note that even if unaccounted-for migration patterns bias the estimates on the responsiveness of mortality rates to economic conditions, they will not affect the attenuation in these resulting from adding pollution controls to the model, unless unaccounted-for migration flows are independently correlated with emissions changes after controlling for observables.

¹² However, Halliday & Kimmitt (2008) also provide evidence of substantial attrition bias among unhealthy seniors and suggest that, for this reason, the finding of high migration rates among the unhealthy may be overstated or even incorrect.

III. Data

Four primary data sources are used for this investigation: pollution levels from the Environmental Protection Agency's *Air Quality System (AQS)* database, unemployment rates from U.S. Department of Labor's *Local Area Unemployment Statistics (LAUS) Database*, mortality rates from the Centers for Disease Control and Prevention's *Compressed Mortality Files (CMF)*, and population estimates from the *Surveillance Epidemiology and End Results (SEER)* Program of the National Cancer Institute. We also used additional sources, described below, to obtain data on state demographic and weather characteristics.

The AQS database (<http://www.epa.gov/air/data/>) contains air pollution concentration data from monitors in the 50 United States and the District of Columbia. Measures are available for a large number of pollutants, but the three that we focus on are carbon monoxide (CO), particulate matter less than 10 microns in diameter (PM10), and ozone (O₃).¹³ Each are among the six "criteria pollutants" designated by the Clean Air Act and are thus widely accepted as having negative health effects. CO, PM10, and O₃ were chosen from among the criteria pollutants, because of the large number of monitors in the AQS and because they have been linked with health problems and mortality in previous research.¹⁴ For instance, Currie and Neidell (2005) and Currie et. al. (2009) find infant mortality is positively and significantly

¹³ CO is a byproduct of combustion, and the majority of CO emissions come from mobile sources (cars and trucks). PM10 is a mixture of small particles and liquid droplets. It includes *primary particles* emitted directly from sources like construction sites or unpaved roads, and *secondary particles* formed by reactions in the atmosphere of chemicals emitted from power plants, industry, and automobiles. O₃ is not directly emitted but is created by chemical reactions between emissions of nitrogen oxides (NO_x) and volatile organic compounds (VOCs). Major sources of NO_x and VOC include emissions from industrial facilities, electric utilities, and motor vehicle exhaust. See <http://www.epa.gov/air/urbanair/>.

¹⁴ We also attempted to examine PM2.5 (particles smaller than 2.5 microns in diameter) but were unable to do so because of the small amount of monitoring (no more than 40 monitors annually) prior to 1999.

related to CO exposure, while Chay and Greenstone (2003) find a correspondingly significant effect for particulate matter.¹⁵

Data on CO concentrations were available from a total of 1,470 monitors from 1980 to 2010; there were 4,144 monitors for PM10 between 1982 and 2010, and 2,799 O₃ monitors from 1980 to 2010. For each monitor-year, the *AQS* provides summaries of air pollution measurements, including arithmetic and geometric means, percentiles and days above specified limit values.¹⁶ A challenge of using the *AQS* is that it provides an unbalanced panel, since pollution monitors change over time. For instance, the median CO monitor was only active for seven years, and data for just 65 CO monitors (4.4%) were available all 31 years. Similarly, the median PM10 monitor was in the data for six years, and fewer than 1.2% were available in all 29 years.

Because each county's monitors are changing over time, considerable effort and experimentation were required to come up with meaningful location-specific pollution measures.¹⁷ If we only included counties that had a pollution monitor located within them, the analysis would be restricted to just 279 counties. Instead, we take advantage of the known location of each monitor (latitude and longitude) and use all monitors close to a county, not just those inside it. Specifically, we follow Currie and Neidell (2005) by calculating a weighted average of pollution readings from all monitors within 20 miles of the county's population centroid, weighting by the inverse of the monitor's distance from the centroid.¹⁸ This

¹⁵ Chay and Greenstone examine total suspended particulates (TSPs), an older EPA designation that has been replaced by PM10 and PM2.5.

¹⁶ We use only monitors reporting CO or O₃ concentrations at an hourly duration, and PM10 concentrations for a 24-hour duration. These are the most commonly used durations for the respective pollutants.

¹⁷ Currie and Neidell (2005) use data just from California monitors, and their results are unaffected by whether they use the subsample of monitors in the panel for the entire period or the entire unbalanced panel (see their footnote 7).

¹⁸ County population centroids are calculated by the U.S. Census Bureau, based on the 2000 Census.

substantially increases the analysis sample to 8,876 observations for 542 counties.¹⁹ Our pollution measures certainly contain errors because we are attempting to identify average levels for the county using monitors for a limited set of locations.²⁰ We discuss alternative measures in Appendix B, when describing our state-level analysis.

The *LAUS* data (<http://www.bls.gov/lau/lauov.htm>) came from a Federal-State cooperative effort in which monthly estimates of total employment and unemployment are prepared for approximately 7,300 areas including: census regions and divisions, states, metropolitan statistical areas, counties, and some cities. Concepts and definitions underlying the *LAUS* data come from the Current Population Survey (CPS), the household survey that provides the official measure of the labor force for the nation. Our main specifications use annual average county unemployment rates as the key proxy for macroeconomic conditions. A consistent county-level unemployment rate data series is available beginning in 1990. We supplemented this by purchasing county-level unemployment data for earlier years from the *Bureau of Labor Statistics* (BLS). However, the *BLS* warns that these data are not fully comparable and cautions against their use in this way. This is one reason why we will also report (in Appendix B) the results of a full state-level analysis, since consistent state unemployment rates are available throughout the entire analysis period.

The *CMF* (http://www.cdc.gov/nchs/data_access/cmfm.htm) include county- and state-level mortality and population counts. Data prior to 1988 are publically available; those from

¹⁹ By contrast, adopting this method at the state level would substantially reduce the number of observations, since many monitored states do not have a monitor within 20 miles of the state population centroid. County-level regressions that include only counties containing pollution monitors yield unemployment coefficients that are almost twice as high as those using the larger sample of counties or the state-level regressions.

²⁰ Chay and Greenstone (2003, p.419-420) address the issue of whether the monitors may be strategically placed by authorities to mislead about true environmental conditions. They note that the Code of Federal Regulations, which describes criteria that determine the siting of monitors, specifically forbids this type of strategic siting and that the EPA can enforce this by overseeing and authorizing localities' monitor siting plans. However, given the frequency of entrance and exit of monitors in our panel, it remains possible that these regulations are not fully enforced.

1989 to 2009 were obtained through a special agreement with the CDC. The *CMF* include a record for every death of a U.S. resident, with source data condensed by retaining information on the state and county of residence, year (rather than exact date) of death, race and sex, Hispanic origin (after 1998), age group (16 categories), underlying cause of death (ICD codes and CDC recodes). The number of records is reduced in the *CMF* by aggregating those with identical values for all variables and adding a count variable indicating the number of such records. The file also contains census-based population estimates; however, instead of using these, we obtained population information from the *SEER* program (<http://www.seer.cancer.gov/data>), because these are designed to be more reliable than census estimates.²¹

Using the *CMF* mortality and *SEER* population data, we constructed dependent variables for the natural logs of: annual total mortality rates; annual mortality rates for eight age groups – infants, 1-19, 20-44, 45-54, 55-64, 65-74, 75-84, and ≥ 85 year olds; and those due to eleven specific causes – respiratory, cardiovascular, acute myocardial infarction (heart attack), ischemic heart disease, cerebrovascular disease (stroke), cancer, accidents (total, vehicular, and non-vehicle), suicide, and homicide. These outcomes were chosen for consistency with the previous literature, to test rigorously for differences across age-categories (since pollution affects groups with low or no participation in the labor force) and to distinguish between sources of death expected to be strongly influenced by pollution levels (e.g. respiratory diseases) versus those anticipated to be unrelated to them (e.g. suicides). From the *SEER* population data, we also constructed regression controls for the share of the county population who were: female, black, other nonwhite, and aged < 1 , 1-19, 45-54, 55-64, 65-74, 75-84 and ≥ 85 years old.

²¹ The *SEER* data are designed to provide more accurate population estimates than standard census projections for the intercensal years and provide additional adjustments for population shifts in 2005, resulting from Hurricanes Katrina and Rita. Differences between the *SEER* and *CMF* population estimates are miniscule prior to 2000 but, for some states, become reasonably large (up to three percent) after 2003.

Although our main estimates use counties as the unit of observation, there are several reasons why a state-year level analysis has advantages. First, we are interested in examining the extent to which pollution provides a mechanism explaining the procyclical variation in mortality found in many previous studies, most of which were conducted at the state level. Second, while there are potentially significant within-state disparities in pollution and unemployment rates, there is also likely to be more error in the measurement of both mortality and unemployment rates at smaller geographic units.²² Smaller counties will also sometimes have zero deaths for some causes or age groups in some years.²³ Third, as mentioned, issues of data comparability across time also become more pronounced when using county data – for instance a consistent unemployment rate series is only available beginning in 1990. Fourth, we can control for additional characteristics for which we are able to obtain data at the state but not the county level, as described below. (However, we cannot include state-year effects in these models.) Finally, there is a question about the level of geographic aggregation at which the macroeconomic effects actually occur. In this regard, Lindo’s (2015) analysis is particularly instructive: he concludes that “more disaggregated analyses severely understate the extent to which downturns are associated with better health”. For all of these reasons, we provide a full replication of results at the state level (see Appendix B), as well as a summary of findings obtained when using county-level mortality and pollution data but measuring macroeconomic conditions at the state level.

²² The greater measurement error in county than state unemployment rates is well known (see for example Ganong and Liebman 2013). Errors in classifying the county of residence at death have been less studied but Pierce and Denison (2006) provide evidence of substantial misrecording of counties using mortality data from Texas.

²³ We replace these zero values with one so that we can take the natural log. An alternative would be to estimate negative binomial regression models, which can deal with zero death counts (Miller, et al., 2009), or to drop these observations.

As mentioned, we included a number of additional location-specific characteristics in our state models. State-year level education shares were obtained from the Current Population Survey (CPS) March Annual Demographic Survey for the share of the population (25 and older) who were high school graduates (without college), had attended but not graduated from college, and who were college graduates (with high school dropouts the reference group). Since weather can affect mortality directly and the relationship between pollution and mortality (Samet et al. 1998, Schwartz 1994), we control for average temperature and precipitation using data from the National Centers for Environmental Information at the National Oceanic and Atmospheric Administration.²⁴ Since the relationship between temperature and mortality is nonlinear, we include a set of indicator variables for 10-degree-Fahrenheit temperature bins, following Deschênes and Greenstone (2011). We also control for the state-year level Gini coefficient, the proportion of the state's State Representatives that are Democrat, and the urbanization rate in the state.²⁵

Table 1 presents summary statistics separately for in-sample and out-of-sample counties. The former have lower unemployment and mortality rates, but similar observable demographic

²⁴ Available at <http://www.ncdc.noaa.gov/>. These data are not available for Hawaii and so we omit it from our analysis. We also estimated and obtained robust results from models that controlled for heating and cooling degree days and the Palmer drought severity index, with data available in all states except Hawaii, Alaska and Washington DC. Our state-level measures of weather are calculated by the National Centers for Environmental Information (formerly the National Climatic Data Center), who provide data at the state-level, and for some US cities and climate divisions, but not all counties. Rather than re-define county-level measures using, for instance, monitor data, we allow the state-by-year fixed effects to account for weather in our county-level regressions. Likewise, the education variables from the CPS are calculated at the state, not county, level, so rather than interpolating from Census years we omit them. Because of the relative insignificance of education and weather variables in the state-level mortality regressions, we do not think these exclusions are important.

²⁵ The state-level urbanization rate is calculated in census years only; we linearly interpolate the values for other years. Gini coefficients are available at http://www.shsu.edu/eco_mwf/inequality.html; the political data are from Klarner (2003) and updates are available at <http://www.indstate.edu/polisci/klarnerpolitics.htm>. DC does not have a State House, so its political measure is based on its US House delegate (always Democrat). Unicameral Nebraska's political measure is based on the party of its governor.

characteristics.²⁶ PM10 concentrations are measured in micrograms per cubic meter ($\mu\text{g}/\text{m}^3$), and CO and O₃ concentrations in parts per million (ppm). Figure 1 presents scatter plots of each of the three pollution levels versus the overall mortality rate and does not provide evidence of a strong relationship between the two; this is not surprising since potentially important confounding factors have not been controlled for. Appendix Figures A1-A3 show state-specific annual average ambient concentrations for each of the three pollutants. PM10 and CO trend downwards over time in most states, while O₃ is relatively flat, but with substantial year-by-year deviations from trends for all three pollutants.

IV. Results

a. Macroeconomic Conditions and Pollution

We begin the econometric analysis by testing whether ambient pollution rises during economic booms and falls during downturns, a necessary first-stage for this to provide a mechanism for the procyclical fluctuation in death rates. In addition to providing supporting evidence for our main question about mortality over the business cycle, the relationship between emissions and business cycles is interesting in and of itself. Surprisingly, we found few other papers directly investigating this issue.²⁷

Table 2 presents regression results where the dependent variables are standardized pollution measures (with mean zero and standard deviation one) for PM10 (columns 1 and 2), CO (columns 3 and 4), and O₃ (columns 5 and 6). All regressions are weighted by the county's

²⁶ The in-sample counties include counties from all states except Alaska, Hawaii, and Wyoming, and represent 57% of the total US population. The large number of counties, and the fact that nearly half of the US population lives in counties without a pollution monitor within 20 miles, highlights the noise in the state-level pollution measure.

²⁷ Heutel (2012) documents the procyclicality of carbon dioxide (CO₂) emissions at the quarterly level. Using ARIMA regressions, he estimates the elasticity between U.S. GDP and CO₂ emissions levels to be between 0.5 and 0.9. Smith & Wolloh (2012) find that aggregate water quality in the U.S. is positively correlated with the national unemployment rate.

population and include county-fixed effects and state-by-year-fixed effects (not reported).

Columns 2, 4, and 6 also control for the county-year level population shares in the specified age, gender, and race/ethnicity categories.

As hypothesized, there is a negative relationship between the unemployment rate and all three pollution measures. A one percentage point increase in joblessness is associated with about a 0.06 standard deviation decrease in the ambient PM10 concentration and about 0.04 standard deviations reduction in ambient CO concentrations. The relationship between O₃ and unemployment is of similar magnitude but not quite statistically significant. Controlling for the demographic covariates increases the size and significance of these correlations. These estimates verify our expectation that pollution is procyclical.

In Appendix Tables A1 and A2, we present results of an extensive sensitivity analysis that compares specifications varying according to the level of the observations (state or county), the inclusion of trends and fixed effects, and the level of clustering standard errors.²⁸ Each reported coefficient in Appendix Table A1 is from a separate regression where the dependent variable is the specified pollution measure, and the reported coefficient is the coefficient on the unemployment rate. In each specification there is a significant correlation between unemployment and at least one of the pollutants, though which pollutant enters significantly depends on the specification. Because of the high collinearity between the pollutants, we should interpret with caution any differences between the effects of the three pollutants. In the specifications with linear trends, the correlation between business cycles and unemployment is the weakest, and in column 8 there is a significant *positive* correlation between ozone and unemployment. We suspect that this arises from a misspecification when including linear trends.

²⁸ Columns 7 and 8 of Appendix Table A1 present results from regressions run at the county level but with the unemployment rate measured at the state level, as suggested by Lindo (2015).

Lastly, there is little difference between the magnitudes of the state-clustered and the county-clustered standard errors. For these reasons, we choose for our main results throughout the rest of the paper to present the county-level regressions with state-by-year fixed effects, rather than state-specific or county-specific linear trends, and errors clustered at the state level (column 6).²⁹

Most coefficients on the demographic variables are statistically insignificant (Appendix Table A3). The percentage of the population that is non-white is not significantly related to pollution after controlling for unemployment. Higher population shares in younger age brackets (below 20 years old) and middle-aged age brackets (45-64 years old), relative to the excluded bracket (20-44 years old), are correlated with higher PM10 and CO pollution. A higher female population share is negatively correlated with all three pollutants, but only significantly so for CO. The age population shares are economically significant, when comparing their magnitudes to those of the unemployment rate. For instance, a one percentage-point increase in the 1-19 years old age share is correlated with a 0.223 standard-deviation increase in CO concentrations, compared to the 0.04 standard-deviation increase correlated with a one percentage-point increase in the unemployment rate.³⁰

b. Total Mortality

We next turn to the main question of whether pollution provides a possible mechanism for the procyclical variation in mortality. Table 3 summarizes the results of models where the dependent variable is the natural logarithm of the overall death rate. All specifications control for

²⁹ State-by-year fixed effects are more flexible than state-specific linear trends. Including both state-by-year fixed effects and county-specific linear trends yields results that are generally unstable and inconsistent because of limited degrees of freedom (there are 542 counties, so 542 county-fixed effect variables plus 542 county-specific linear trend, and 48 states and 28 years, implying 1,344 state-by-year fixed effects, in a total sample of 8,876 county-year observations). We also included both linear and quadratic trends, and the results were generally comparable to including just linear trends.

³⁰ More demographic and control variables are available at the state-year level, which we can control for in our state-year level analysis that does not include state-by-year fixed effects (see section e below and Appendix B).

demographic variables and county fixed-effects and state-by-year effects, as well as the county unemployment rate – our proxy for macroeconomic conditions. The basic model, in column 1, verifies earlier findings by Ruhm (2000) and others showing that unemployment rates are negatively correlated with mortality, although the coefficient is not statistically significant.³¹ Specifically, a one percentage point increase in the unemployment rate is associated with a 0.35% decrease in the total mortality rate. This is smaller than the 0.5% predicted reduction obtained by Ruhm (2000), but consistent with Stevens et al.'s (2011) finding that the estimated procyclicality of mortality is somewhat attenuated when adding post-1991 observations to the model.³² Among the demographic coefficients, age has the expected effect on mortality, with higher shares of senior citizens being correlated with higher mortality rates. The coefficient on the "other" race category (non-white and non-black) is negative, and the coefficient on the black share is positive. Gender is insignificant (see Appendix Table A4).

The remainder of Table 3 adds controls for pollution to the basic model. Standardized PM10 concentrations are incorporated in column 2, CO concentrations in column 3, O₃ concentrations in column 4, and all three pollution measures simultaneously in column 5. PM10 and CO, each when only one pollutant is included, are positively correlated with mortality and attenuate the predicted macroeconomic effect. The point estimate on CO suggests that a one standard deviation increase in CO predicts a 1.6% rise in the mortality rate. O₃ when included alone is uncorrelated with mortality and does not affect the relationship between unemployment and mortality. Controlling for all three pollutants together (column 5), the CO coefficient is the

³¹ When the standard errors are clustered at the county level, this coefficient is significant at the 10% level (See Appendix Table A2).

³² Using data from 1978-2006 and a specification similar to that in column 1, they obtain an unemployment coefficient of -.0019. See Ruhm (2015) for a detailed analysis confirming that the procyclical variation in mortality has weakened in recent years.

only one that is positive and statistically significant at the 1% level, with a one standard deviation increase still predicting a 1.6% rise in mortality. O_3 has a negative relationship with mortality that is just barely significant, and the relationship between PM10 and mortality is positive but just half as big as in column 2. Given this pattern, we primarily focus on the results for CO below, while controlling for all three types of pollution in our models.³³ However, as mentioned earlier, the results in Appendix Tables A1 and A2 demonstrate that we should interpret with caution any difference in the predicted effects of the three pollutants.

Adding CO pollution to the model cuts the unemployment rate coefficient by 17-18%, depending on whether the other two pollutants are included in the regression. In the basic specification (column 1), a one percentage point increase in unemployment reduces predicted mortality by 0.35%; this falls to 0.29% when all three pollution concentrations are controlled for (column 5).³⁴ Both test statistics and p-values are presented in the respective columns in Table 3. A Wald test shows that the difference between the two coefficients is significant at the 10% level when all three pollutants are controlled for. The Gelbach (forthcoming) z-statistic likewise indicates that the inclusion of pollutants attenuates the unemployment coefficient at the 10% level. Thus, our results should be interpreted as providing reasonably strong evidence that pollution affects the relationship between business cycles and mortality.

³³ Stronger results for CO than other pollutants are consistent with the findings of other researchers. Currie and Neidell's (2005) study of infant mortality also uncovers significant effects of CO, but not PM10 or O_3 , concentrations. Beatty and Shimshack (2014) investigate all three pollutants' effects on childhood morbidity and find effects from CO but not PM10. Arceo et al (forthcoming) examines infant mortality in Mexico and obtains significant effects from both PM10 and CO, but their estimated magnitudes of CO coefficients are larger than those found in the US.

³⁴ Appendix Table A4 also presents results for a model that controls for the pollution measures but not the unemployment rate. When doing so, CO is positively correlated with total mortality at the 1% level, while PM10 is insignificantly related to it and O_3 is barely negatively related (see column 6 of Table A4). Coefficients for the remaining right-hand-side variables are also quite similar to those in our main specifications.

Appendix Table A2 repeats the same sensitivity analysis that was presented in Appendix Table A1, though here it presents regression results of the relationship between unemployment and mortality, with and without pollution controls (as in Table 3). In all specifications we observe the expected negative relationship between unemployment and mortality, but its magnitude and significance varies across specifications. In our preferred specification (column 6), this correlation is not quite significant (although it is significant based on the standard errors clustered at the county level), and in this respect our results presented in the main tables throughout the paper are conservative. In the specifications that include linear trends, the attenuation of the unemployment coefficient after including pollution controls is often insubstantial. As described above, we argue that including linear trends, rather than state-by-year fixed effects, is a misspecification. Nevertheless, we emphasize that our finding that including pollution controls attenuates the relationship between unemployment and mortality is sensitive to the inclusion of linear trends, rather than state-year fixed effects.³⁵

Attenuation bias may plague these estimates, especially because of the potential for measurement error in the pollution variables.³⁶ We conduct errors-in-variables regressions, allowing for different levels of reliability in the pollution measures to see how attenuation bias affects the pollution and unemployment coefficients.³⁷ The results are reported in Appendix Table A5. This test is limited in important ways.³⁸ But the results suggest that measurement

³⁵ See Table 8 below for a model that includes both linear and quadratic time trends.

³⁶ Measurement error in the pollution variables is likely to be more severe at the state than at the county level, while the opposite is likely to be true for measurement error in the unemployment rate. See Appendix B.

³⁷ Errors-in-variables regression is a method for accounting for attenuation bias. For a specified level of reliability in a set of independent variables, an errors-in-variables regression will provide updated coefficient estimates for all independent variables. While it is known that attenuation bias pushes the coefficients of the mismeasured variables to zero, errors-in-variables regression gives information about the direction of bias of the other variables.

³⁸ First, clustering of standard errors is only possible with bootstrapping. With bootstrapping, population weighting is not allowed, and it is not possible to include the large number of county and state-by-year fixed effects. So, we do not bootstrap and instead use regressions with non-robust standard errors. Second, the reliability ratios cannot be

error may be causing a downward bias (more negative) on our estimated unemployment coefficients,³⁹ and therefore that pollution may attenuate the unemployment coefficient by a larger amount than appears in our estimates. This implies that our reported results are conservative.

c. Age-Specific Mortality

Miller et al. (2009) find that procyclical variations in mortality are particularly pronounced among the young and old – who are seldom directly involved in the labor market. Changes in pollution levels could explain some of these patterns, since the health of these groups might be especially vulnerable to environmental risks, and negative shocks might be relatively likely to result in death.⁴⁰ We address this possibility in Table 4, which summarizes estimation results for the mortality rates of eight age groups: <1, 1-19, 20-44, 45-54, 55-64, 65-74, 75-84, and >84 year olds. For each age group, Table 4 presents the results of two specifications. Column a controls for county unemployment rates, county and state-by-year effects, and demographic variables, but not air pollution.⁴¹ Column b adds controls for the standardized pollution levels.

In the basic model (column a), unemployment is negatively correlated with the mortality rates of all age groups except infants and 1-19 year olds, although the relationship is significant only for the oldest age group. A one point increase in the unemployment rate is predicted to

lower than the R-squared values from regressions of the pollution measures on all other controls (0.89 for PM10, 0.92 for CO, and 0.94 for ozone), so we are unable to test under low reliability ratios.

³⁹ Compared to the least squares regressions, with a reliability ratio of 0.96 on all three pollution measures, the unemployment coefficient drops by 11%, from -0.00286 to -0.00254.

⁴⁰ Much of the prior literature on the health effects of pollution focuses on infant mortality (Chay and Greenstone 2003, Dehejia and Llenas-Muney 2004, Currie and Neidell 2005, Currie et. al. 2009, Greenstone and Hanna 2014, Knittel et. al. 2011).

⁴¹ Observations are weighted by county population in the specified age category.

reduce the mortality of >84 year olds by 0.44%. This compares to statistically insignificant decreases of 0.62%, 0.29%, 0.22%, 0.09%, and 0.22% for 20-44, 45-54, 55-64, 65-74, and 75-84 year olds, and insignificant increases of 0.28% and 0.46% for infants and 1-19 year olds.

When adding controls for pollution concentrations (specification b), we see the hypothesized attenuation of the macroeconomic coefficients for elderly: the unemployment coefficient declines, in absolute value, by 23%, 12%, and 9% for 65-74, 75-84, and >84 year olds. However, none of these changes are statistically significant. The only statistically significant difference between unemployment coefficients occurs for 20-44 year olds. It is noteworthy that the large (though insignificant) macroeconomic fluctuations in deaths of 1-19 year olds are *not* substantially affected by the inclusion of the pollution variables, which makes sense if these deaths occur for reasons that are largely unrelated to environmental risks.⁴² As above, PM10 and O₃, are with a few exceptions, not significantly related to the mortality rates of any of the groups, whereas CO concentrations are predicted to significantly increase death rates for all eight age categories.

d. Cause-specific mortality

The evidence that changes in air pollution explain a portion of the procyclical fluctuation in mortality will be strengthened if the unemployment coefficients are more sharply attenuated after controlling for emissions for fatalities that we expect to be strongly related to pollution levels (such as those from respiratory diseases) than for those where the relationship is anticipated to be weaker (like cancer deaths) or nonexistent (like homicides).⁴³ We examine this

⁴² Consistent with this, accidents were the leading cause of death in 2010 for 1-4, 5-14, and 15-24 year olds – accounting for 32%, 31% and 41% of mortality for these groups – but were much less important for infants or senior citizens, where they were responsible for 5% and 2% of fatalities (Murphy and Kochanek, 2012).

⁴³ Peters et al. (2004) uncover a positive correlation between exposure to pollutants caused by traffic and heart attack. Mustafic et al.'s (2012) meta-analysis indicates that short term exposure to several pollutants, including PM10 and CO, is significantly associated with heart attack risk. Clancy et al. (2002) demonstrate a correlation

in Table 5 by considering deaths from respiratory, cardiovascular, and cerebrovascular diseases, from cancer, and from two subcategories of cardiovascular disease – ischemic heart disease and acute myocardial infarction (heart attacks).

Mortality rates are negatively correlated with unemployment rates for four of the six causes of death in the basic model (column a), without controlling for pollution, although the association is not significant.⁴⁴ Cardiovascular deaths are the most procyclical – a one percentage point increase in the unemployment rate decreases predicted cardiovascular deaths by 0.66 percent. The same rise in unemployment is estimated to reduce mortality from respiratory disease, heart attacks, ischemic heart disease, and stroke by 0.3 to 0.4 percent. Cancer fatalities are unrelated to macroeconomic conditions, as has been found previously (Ruhm, 2000).

The pollution measures are added as controls in specification b. Based on the literature, we hypothesize that pollution will increase respiratory deaths and possibly cardiovascular deaths. PM10 and O₃ usually do not have a significant effect, consistent with the results for total mortality, except for a barely significant positive coefficient on PM10 for cardiovascular fatalities. Conversely, ambient CO levels are significantly positively associated with respiratory, cardiovascular, and ischemic heart disease deaths: a one-standard-deviation increase in CO concentrations predicts 3.0%, 0.9%, and 2.6% increases in mortality from these causes. The coefficient on CO is also positive and significant for heart attack and stroke deaths. This is consistent with earlier findings of a positive effect of pollution for these causes of death. The coefficient on CO for cancer deaths is barely significant and small.

between particulate matter concentrations and respiratory and cardiovascular deaths. Wellenius et. al. (2012) link daily levels of PM2.5 to strokes.

⁴⁴ When errors are clustered at the county level, the coefficient for cardiovascular deaths is significant.

Controlling for pollution reduces the magnitude of the unemployment coefficient for respiratory deaths by about 40%, although the original effect was of small magnitude and imprecisely estimated. A Wald test shows that this difference is significant at the 5% level. It slightly attenuates the predicted effect on cardiovascular fatalities, but when focusing on ischemic heart disease, which is likely to be responsive to short-term triggers and changes in risk factors⁴⁵, the magnitude of the coefficient actually increases. The estimated unemployment effect declines by 19% for stroke deaths and by 10% for heart attack fatalities. With the exception of respiratory deaths, none of these changes are statistically significant.⁴⁶

As a placebo test, Table 6 presents information on deaths from external causes including motor vehicle and other accidents (separately), suicides, and homicides. Mortality rates from motor vehicle accidents are procyclical, and the others are countercyclical, though none of the relationships is significant.⁴⁷ We do not expect fatalities from these causes to be strongly related to pollution levels, and they are not for suicides, homicides or motor vehicle deaths. The last finding is especially comforting given the potential for variation in driving behavior to be a confounding omitted variable.⁴⁸ Surprisingly, PM10 pollution is positively correlated with non-vehicle accidental deaths, and controlling for it increases the magnitude of the (positive) unemployment coefficient. A potential explanation is that many deaths in this category occur at

⁴⁵ Pope et al. (2006) find a link between short-term pollution exposure and ischemic heart disease.

⁴⁶ We also replicate Table 5's regressions restricting the deaths to just infants or to just those 85 years old or older, since mortality rates among these groups may be the most sensitive to pollution and to the business cycle. The causes of death from Table 5 are not major contributors to infant mortality, so there was little relationship between those death rates and unemployment. The correlation between CO and infant respiratory mortality is about five times as large as the correlation between CO and overall respiratory mortality. For those 85 years and older, cardiovascular deaths and stroke deaths were significantly procyclical.

⁴⁷ These results are consistent with prior research findings (e.g. Ruhm, 2000), except that a procyclical variation in non-vehicle accidents and homicides has sometimes previously been found. Ruhm (2015) provides evidence that non-vehicle accidents have shifted from being procyclical to countercyclical over time.

⁴⁸ Controlling for per-capita miles driven, (using data from <http://www.fhwa.dot.gov/policyinformation/statistics.cfm>), which are significantly correlated with the vehicle fatality rate, does not substantially alter these results.

work and employment in “polluting” industries is less safe, so that when production rises, both emissions and non-vehicle accidents increase. The data do not distinguish whether deaths occurred on the job, but evidence from the *Bureau of Labor Statistics Injuries, Illness, and Fatalities, Census of Occupational Injuries Database* confirms the high rates of fatal injuries in the cyclically sensitive manufacturing and construction industries.⁴⁹ We replicate the regressions for non-vehicle accidental deaths separately for working age (20-64) and non-working age people. In concordance with our hypothesis, the coefficient on PM10 for working age deaths is about 50% larger than the coefficient for non-working age deaths, but both are significantly positive.

e. State Analysis

We replicated our analysis using state- rather than county-level data. The procedures for doing so, issues raised in such an analysis, and the results obtained are detailed in Appendix B. The results for total mortality are remarkably similar to those found at the county level. Pollution is procyclical with only CO (and not PM10 or O₃) positively predicting death rates. The overall macroeconomic effect and the attenuation from controlling for pollution are also quite similar to those found above: a one percentage point rise in unemployment predicts 0.32% reduction in total mortality and this effect is attenuated by 13% with the addition of pollution covariates.

For age and cause of death, the findings are also generally qualitatively consistent with those from the county-level analysis, but the predicted unemployment rate effects are often larger at the state level, in accord with results obtained in Lindo (2015). Conversely, the significance of the correlation between CO and mortality decreased in most specifications at the state level,

⁴⁹ For instance, using data for 2009 from <http://www.bls.gov/iif/oshwc/cfoi/cftb0241.pdf> (accessed September 21, 2015), we calculate that construction industries had a non-vehicle fatal accident rate that was over four times as large as that for all industries (6.9 vs. 1.5 per 100,000 workers) and that this industry accounted for over 30 percent of such occupational mortality in that year.

which we attribute to the coarser geographic detail of the CO measure. We also followed Lindo's suggestion to estimate county-level models but controlling for state rather than county unemployment rates. In part this may account for measurement error, if unemployment is better measured at the state level and pollution better measured at the county level. The results of this analysis, for total mortality, are presented in Table 7 (standard errors are clustered at the state level). This table typically reveals larger unemployment rate coefficients than in the pure county level analysis (Table 3), while the pollution coefficients were little changed, and the attenuation in the unemployment effect when including controls for all three pollution measures is marginally larger (19% versus 17%).

f. Robustness Checks

Table 8 summarizes additional robustness tests. County level data are used and all models control for demographic variables, as well as county- and state-by-year fixed-effects. Each table entry shows the unemployment rate coefficient from a separate regression. The second row for each model also holds constant the three pollution measures. Thus these replicate the specifications in columns 1 and 5 of Table 3, other than the changes that are detailed in the third row. Of primary interest is the extent to which the addition of pollution controls attenuates the unemployment coefficient.⁵⁰ In Table 8, the standard errors are clustered at the county, not the state level. Although this specification is less conservative, we choose it in this table to make clearer how the various robustness checks affect the significance of the unemployment coefficients. With county-clustered errors, the basic specification (Model 1 in Table 8) yields coefficients on unemployment that are significant at the 10% level. Comparing the significance level across the models in Table 8 shows how the specifications affect the main results, although

⁵⁰ All other analyses, at both the state and county level, have also been subjected to these robustness tests, with results available upon request.

the significance will generally be lower with state-clustered standard errors, as shown in Appendix Table A2.

Model 1 repeats the results of the basic specification (but with standard errors clustered at the county level), showing that the three pollution measures “explain” (in a statistical sense) around one-sixth of the total macroeconomic effect. Model 2 is the same, except that the data are not weighted by county population. This might be desirable if, for example, pollution is more accurately measured in a smaller and less populous county, because it is geographically small and more of the population is close to the pollution monitors.⁵¹ The overall macroeconomic effect is considerably weaker in this case – the unemployment coefficient is $-.00222$ rather than $-.00346$ and is not statistically significant – but the attenuation when controlling for pollution is still around 15%.⁵² In model 3, we do not weight the pollution monitor data by the percent of total potential monitor-days actually observed, which might make sense if the monitor-days are chosen randomly so that, for instance, a monitor with observations during 183 days should count just as much as one operating every day of the year. Such reweighting has virtually no impact on the results. In model 4, we drop the years 1982-1984, where complete data were available for only a few counties, again without changing the predicted effects.

Model 5 captures potential nonlinearities in the pollution-mortality relationship by adding quadratic terms for the pollution measures. None of the quadratic term coefficients are significant (the point estimates suggest that mortality is concave in PM10 and ozone levels and convex in CO) and their inclusion has no effect on the unemployment rate-mortality relationship. Model 6, age-adjusts the total mortality rate using CDC definitions of the age-standardized

⁵¹ More generally, unweighted estimates are often preferred to those that are weighted (e.g. see Wooldridge, 1999; Butler, 2000; Solon et al., 2015).

⁵² At the state level, the results are considerably *stronger* when not weighting the regressions by (state) population.

population (e.g. see Murphy and Kochanek, 2012).⁵³ In contrast to Stevens et al. (2011), we obtain very similar results to those found when using unadjusted mortality rates. A likely reason for the difference is that we include more complete controls for age in all of our models.⁵⁴

Model 7 includes controls for state-specific linear and quadratic time trends. This specification is less general than our preferred model, which includes a full set of state-by-year fixed effects, but is presented because state trends have frequently been included in related previous research (e.g. Dehejia and Lleras-Muney 2004; Hoynes et al. 2012; Schaller 2012; Stevens et al. 2011). The results are robust to this specification, although with slightly smaller coefficient estimates and standard errors. But as shown in Appendix Tables A1 and A2, the inclusion of state or county-level linear trends reduces the attenuation of the unemployment coefficient when controlling for pollution.

The dependent variable in model 8 is the level rather than log of total mortality. The unemployment rate coefficients are reduced, as expected since mortality rates are per 1000 individuals, but the addition of pollution controls continues to attenuate the predicted macroeconomic effect, although by a modestly smaller amount than before. Finally, in column 9 we include only those counties that include a monitor, rather than those that have a monitor within 20 miles (4,082 counties rather than 8,876 counties). This smaller sample includes more populous counties on average, and the relationship between mortality and unemployment is 60% larger than in the main model. Including pollution reduces the coefficient magnitude by about 10%.

⁵³ When age-standardizing, mortality in each age category is weighted by a fixed age distribution for each location, rather than the actual age distribution.

⁵⁴ Our regressions include seven age categories (plus a reference group) versus just two in Stevens et al. (2011).

We also estimated a number of additional models. As an alternative to the standardized pollution variables, we kept pollution in native units (i.e. in $\mu\text{g}/\text{m}^3$ for PM10 and ppm CO and O₃). This had no impact on the estimated effects of macroeconomic conditions, nor did it change the direction or relative significance of the pollution coefficients. Second, we estimated specifications using trend deviations in Gross State Product (GSP) as the macroeconomic proxy.⁵⁵ The GSP coefficient was positive but not quite significant (the p-value was 0.19), weakly suggesting the procyclicality of mortality. However, the attenuation occurring when adding the pollution controls was only around 2 percent.⁵⁶ Third, we replicated the regressions after first-differencing the pollution measures, unemployment, and mortality rates. The relationship between unemployment and pollution was consistent with the base case results though somewhat smaller in magnitude, but with no evidence of a relationship between pollution and mortality. We attribute this to a misspecification from first-differencing when the data are actually stationary.⁵⁷ Fourth, we restricted the sample to those county-years for which we have a measure for CO, but not necessarily for the other pollutants. We do this since CO was most consistently linked to deaths in our and previous studies. This increases the sample size from 8,876 to 12,498 county-years. The results are similar to those using the base specification, though the magnitude of the relationship between unemployment and mortality is somewhat

⁵⁵ Data were from the Bureau of Economic Analysis: <http://www.bea.gov/iTable/iTable.cfm?ReqID=70&step=1>. We detrended each state's annual real GSP (in logs) using the Hodrick-Prescott filter (Hodrick and Prescott 1997), with a smoothing parameter of 6.25 for annual data (Ravn and Uhlig 2002).

⁵⁶ Differences in results when using GSP versus those for unemployment rates are not surprising, since previous studies (e.g. Gerdtham and Johannesson, 2005) provide evidence of stronger procyclical fluctuations in mortality when proxied by unemployment rates than when using other measures, such as deviations from GDP trends.

⁵⁷ Unit root tests suggested that most series were stationary. Specifically, we conducted the Levin-Lin-Chu (2002) and the Harris-Tzavalis tests for stationarity for all three pollution variables, the unemployment rate, and total mortality. Since both tests require balanced panels, we used the subset of counties that are present in all years from 1986-2009 (185 counties) in this analysis. We reject a unit root for both PM10 and O₃ using both tests but for CO only with the Levin-Lin-Chu test. We reject a unit root for unemployment and for total mortality only with the Harris-Tzavalis test (which is more appropriate in our dataset with large N but moderate T).

reduced. Finally, we estimated models for the subperiods 1982-1994 and 1995-2009.⁵⁸

Consistent with the results of two recent studies (Stevens et al., 2011; Ruhm, 2013), we found that mortality was highly procyclical during the earlier period but not at all in the later one, with the addition of pollution controls modestly attenuating the predicted macroeconomic effects in both periods. However, as Ruhm (2015) has emphasized, estimates obtained using relatively short time periods are likely to be sensitive to the precise choice of starting and ending dates, and so we do not have much confidence in these results.

g. Comparison to Other Estimates

The preceding analysis demonstrates that air pollution provides a plausible mechanism for some of the procyclical mortality. Causality is difficult to prove because of the potential for uncontrolled confounding factors. We can, however, examine whether our predicted pollution effects are plausible when compared to results from previous research providing micro-level estimates of the relationship between ambient concentrations and mortality. This exercise is summarized in Table 9, with a detailed description of the underlying methods and calculations provided in Appendix C.

Although the basic procedure is straightforward, several issues need to be addressed. First, the estimates above examined the percent change in mortality predicted by a one standard deviation change in the specified pollution level. By contrast, earlier research reports effects of standard units of pollution (e.g. parts per million or $\mu\text{g}/\text{m}^3$) on different outcome measures (e.g. deaths per 100,000 or relative risk ratios). Therefore, our first task was to use conversion factors to make our estimates as comparable as possible to those of prior investigations. Second, some previous studies focused on incidence (e.g. of strokes or heart attacks) rather than mortality rates.

⁵⁸ We break the sample in this way because 1995, which is roughly the midpoint of the full sample period, is the first year for which PM10 data become available in the majority of states.

In these cases, we make the strong assumption that the incidence and mortality effects are comparable. Third, the prior research analyzes a limited set of mortality outcomes, using regression specifications that may be quite different than ours.

Given these issues, we present point estimates only (no confidence intervals or standard errors) to highlight that our “back-of-the-envelope” calculations are not meant to provide precise estimates, but instead a qualitative assessment of how our results compare to those obtained previously. We also emphasize that the prior estimates are often imprecise, so that deviations between our results and those of earlier work do not necessarily indicate biases or errors in our predictions. For this analysis we use our estimates from the state-level analysis (see Appendix B), because these provide more consistent estimates of the relationship between mortality and unemployment.⁵⁹

Table 9 provides consistent, although certainly not definitive, evidence corroborating our hypothesis that pollution may explain a substantial portion of the procyclicality of mortality. Based on prior estimates of the mortality effects of pollution, combined with our results showing how pollution varies with macroeconomic conditions, pollution is estimated to account for between 5% and 40% of the procyclicality of mortality in most models, although with smaller or larger estimates in three cases (columns 4, 6 and 7). Conversely, estimates based fully on our analysis (including those for the predicted mortality effects of pollution) suggest that air pollution accounts for 8% to 12% of the cyclical fluctuations, in cases where we estimate that it has any effect.⁶⁰

⁵⁹ In particular, the relationship between unemployment and infant mortality, one of the main outcomes examined in previous studies, is positive (but insignificant) in the county-level models.

⁶⁰ We did not find a significantly positive effect of PM10 on deaths from strokes, heart attacks or cardiovascular diseases, so Table 9 reports a zero impact in these cases.

V. Discussion

Recent research indicates that mortality increases during times of economic strength and declines when the economy weakens. This relationship is strongest for the young and old, rather than for persons of prime-working age, suggesting that the direct effects of changes in labor market conditions are unlikely to fully explain these patterns.⁶¹ A plausible alternative is that variations in other risks explain some of the macroeconomic fluctuations. One such risk, traffic fatalities, has been widely studied and universally found to increase when the economy strengthens. However, a different potential health threat – air pollution – is also likely to depend on the state of the economy but has not been previously studied. We begin to remedy this shortcoming by investigating how three types of pollutants, carbon monoxide (CO), particulate matter (PM10), and ozone (O₃), fluctuate with macroeconomic conditions, and whether these variations help to explain observed fluctuations in mortality rates.

Specifically, we used panel data for 1982-2009 to identify the effect of the macroeconomy on mortality rates, with and without controls for ambient pollution concentrations. Consistent with previous research, we uncovered a negative correlation between county unemployment and mortality rates, after controlling for county demographic characteristics and state-by-year fixed-effects. Adding the three air pollutants to the model attenuated the predicted unemployment rate effect by about 17%, consistent with a substantial role for air pollution. This attenuation is significant at the 10% level or better, but is insubstantial in models that include linear time trends. CO concentrations were estimated to be more important than PM10 or O₃ concentrations, but we do not know whether this represents

⁶¹ However, there could be indirect effects. For example, working age individuals may have more time during economic downturns to care for young children or aged parents, resulting in health benefits for these groups.

differences in true health effects, the accuracy of pollution measurement, or correlations with other types of pollution or uncontrolled confounding factors.⁶²

The results for specific causes of death were also largely consistent with a role for air pollution as a mechanism explaining procyclical changes in mortality. In particular, CO levels had large positive direct estimated effects on fatalities from respiratory causes and their inclusion substantially and significantly attenuated the unemployment rate coefficients in these models. However, the macroeconomic estimates were often imprecise, and the attenuation resulting from including the pollution controls was modest for cardiovascular mortality, the leading cause of death. Pollution levels were also positively associated with non-vehicle accidental deaths for reasons that are not well understood but could be related to the growth, during economic rebounds, of risky cyclically-sensitive jobs such as those in construction industries. As a check on the plausibility of our results, we combined our estimates of the responsiveness of pollution to macroeconomic conditions with the findings of detailed previous investigations examining pollution effects on mortality. The results of this analysis corroborate the possibility that changes in pollution levels explain a portion of the observed procyclical variation in deaths.

This research should be considered preliminary because of some unexplained results and since many extensions would be desirable. At the most basic level, we cannot be sure that we are accurately estimating the true effects of pollution. On the one hand, our pollution measures are crude, being limited to just three of many types of pollutants, and measured with error, leading to an understatement of the true effects. In future work it would be useful to

⁶² The toxicity of exposure to high CO levels has long been understood, and recent epidemiological studies also suggest the dangers of exposure at lower levels, for even relatively brief periods of time (USEPA 2010). Consistent with this, some recent research (Arceo et. al. forthcoming, Beatty and Shimshack 2014, Currie and Neidell, 2005) finds a key role for CO. However, other investigations obtain negative health effects of total suspended particulates (Chay and Greenstone, 2003) or, in some specifications, PM10 (Knittel et al., 2011). We also link PM10 to mortality in some of our estimates. Thus, disentangling between CO and PM10 mortality effects remains an area with unanswered questions.

control for additional pollutants and to go beyond average ambient concentrations (e.g. by examining peak levels and fluctuations around the mean). The use of county-level data is also potentially problematic since unemployment rates are measured quite noisily. We addressed this by conducting a state-level investigation, which provided results that were largely consistent with county-level findings.

Second, we only examine the contemporaneous relationship between health, pollution, and the business cycle; however, both pollution and recessions could have uncaptured longer-term effects.⁶³ Finally, we cannot be sure that an attenuation of the estimated macroeconomic effects occurring when pollution controls are added to the model reflects a causal relationship rather than a spurious correlation between pollution and unobserved factors. This may lead to an overstatement of the true effect of pollution and suggests that alternative strategies, such as instrumental variables techniques, might be useful.

Our findings should certainly *not* be taken to imply that recessions are beneficial (although they may slightly less costly than is commonly understood), or used to argue for (or against) macroeconomic stabilization policies. Indeed, the procyclicality of pollution-induced mortality could be irrelevant to optimal emissions policy, if the marginal external damages (to which the marginal price of pollution should be equalized) do not vary over the business cycle. Conversely, it may be useful to moderate the cyclical fluctuations in pollution if the damages are nonlinear, or if the elimination or moderation of mortality spikes during expansions is a public policy goal in its own right. A tradable emissions permits scheme might assist in accomplishing this goal since the costs of polluting would rise in periods of economic strength, when the demand for permits is high.

⁶³ See Coile et al. (2014) for evidence that recessions have long-run effects on health.

Bibliography

- An R, Liu J (2012) Local Labor Market Fluctuations and Physical Activity Among Adults in the United States, 1990-2009. ISRN Public Health, Article 318610, 1-7.
- Angrist, J. D., & Pischke, J. S. (2009). Mostly harmless econometrics: An empiricist's companion. Princeton university press.
- Arceo E, Hanna R, Oliva P (forthcoming) Does the Effect of Pollution on Infant Mortality Differ Between Developing and Developed Countries? Evidence from Mexico City. The Economic Journal
- Arkes J (2009) How the Economy Affects Teenage Weight. Soc Sci Med 68, 1943-1947.
- Beatty T, Shimshack J (2014) Air Pollution and Children's Respiratory Health: A Cohort Analysis. Journal of Environmental Economics and Management 67, 39-57.
- Böckerman P, et al. (2006) Does a Slump Really Make You Thinner? Finnish Micro-Level Evidence 1978-2002. Health Econ 10(5), 9-13.
- Butler, J.S. (2000) Efficiency Results of MLE and GMM Estimation With Sampling Weights. Journal of Econometrics 96(1), 25-37.
- Charles KK, DeCicca P (2008) Local Labor Market Fluctuations and Health: Is there a Connection and For Whom? J Health Econ 27, 1532-1550.
- Chay K, Greenstone M (2003) The Impact of Air Pollution on Infant Mortality: Evidence from Geographic Variation in Pollution Shocks Induced by A Recession. Q J Econ 118, 1121-67.
- Chay K, Greenstone M (2005) Does Air Quality Matter? Evidence from the Housing Market. Journal of Political Economy 113, 376-424.

- Clancy, L, P Goodman, H Sinclair, D Dockery (2002) Effect of Air Pollution Control on Death Rates in Dublin, Ireland: an Intervention Study. Lancet 360, 1210-1214.
- Coile CC, Levine P, and McKnight R (2014) Recessions, Older Workers, and Longevity: How Long are Recessions Good for Your Health? American Economic Journal: Economic Policy, 6(3), 92-119.
- Colman GJ and Dave D (2013) Exercise, Physical Activity, and Exertion Over the Business Cycle. Social Science and Medicine 93 (September), 11-20.
- Cotti C, Tefft N (2011) Decomposing the Relationship Between Macroeconomic Conditions and Fatal Car Crashes During the Great Recession: Alcohol- and Non-Alcohol-Related Accidents. B.E. Journal of Economic Analysis and Policy 11(1 – Topics), Article 48.
- Courtemanche C (2009) Longer Hours and Larger Waistlines? The Relationship Between Work Hours and Obesity, Forum for Health Economics and Policy 12 (2 – Obesity), Article 2.
- Currie J, Neidell M (2005) Air Pollution and Infant Health: What Can We Learn from California's Recent Experience?, Quarterly Journal of Economics 120, 1003-1030.
- Currie J, Neidell M, Schmieder J (2009) Air Pollution and Infant Health: Lessons from New Jersey, Journal of Health Economics 28, 688-703.
- Dávlos María E, Hai Fang and Michael T. French (2012) Easing the Pain of an Economic Downturn: Macroeconomic Conditions and Excessive Alcohol Consumption. Health Economics 21(11) 1318-1335
- Dehejia R, Lleras-Muney A (2004) Booms, Busts, & Babies' Health. Q J Econ 119, 1091-1130.
- Deschênes, O., Greenstone, M. (2011). Climate Change, Mortality, and Adaptation: Evidence from Annual Fluctuations in Weather in the US. American Economic Journal: Applied Economics, 3, 152-185.

- Dockery DW, Pope CA (1994) Acute Respiratory Effects of Particulate Air Pollution. Annual Review of Public Health 15, 107-132.
- Freeman DG (1999) A Note on 'Economic Conditions and Alcohol Problems. J Health Econ 18, 661-70.
- Ganong, P., & Liebman, J. B. (2013). The decline, rebound, and further rise in SNAP enrollment: Disentangling business cycle fluctuations and policy changes (No. w19363). National Bureau of Economic Research working paper.
- Gelbach, J. B. (forthcoming). When do covariates matter? And which ones, and how much? Journal of Labor Economics.
- Gerdtham, Ulf-G, Magnus Johannesson (2005) Business Cycles and Mortality: Results from Swedish Microdata. Social Science and Medicine 60, 205-218.
- Graff Zivin, J., & Neidell, M. (2012). The Impact of Pollution on Worker Productivity. American Economic Review, 102, 3652-3673.
- Graff Zivin, J, Neidell M (2013) Environment, Health, and Human Capital. J Econ Lit 51, 689-730.
- Greenstone, M, R Hanna (2014) Environmental Regulations, Air and Water Pollution, and Infant Mortality in India. American Economic Review 104, 3038-3072.
- Gruber J, Frakes M (2006) Does Falling Smoking Lead to Rising Obesity? J Health Econ 25, 183-197.
- Halliday, Timothy J. (2007) Business Cycles, Migration and Health. Social Science and Medicine 64, 1420-1424.
- Halliday, TJ, Kimmitt, MC (2008). Selective Migration and Health in the USA, 1984-93. Population Studies: A Journal of Demography, 62(3), 321-334.

- Hanna, R., & Oliva, P. (2015). The effect of pollution on labor supply: Evidence from a natural experiment in Mexico City. Journal of Public Economics, 122, 68-79.
- Harris, R. D., & Tzavalis, E. (1999). Inference for unit roots in dynamic panels where the time dimension is fixed. Journal of econometrics, 91(2), 201-226.
- Heutel, G. (2012) How Should Environmental Policy Respond to Business Cycles? Optimal Policy under Persistent Productivity Shocks. Review of Economic Dynamics. 15, 244-264.
- Hodrick, R, E Prescott (1997) Postwar US Business Cycles: An Empirical Investigation. Journal of Money, Credit, and Banking 29, 1-16.
- Hoynes, H. W., Miller, D. L., & Schaller, J. (2012). Who suffers during recessions? Journal of Economic Perspectives 26(3), 27-48.
- Klarner, C. (2003). The measurement of the partisan balance of state government. State Politics & Policy Quarterly, 3(3), 309-319.
- Knittel C, D Miller, N Sanders (2011) Caution, Drivers! Children Present: Traffic, Pollution, and Infant Health. NBER Work Pap 17222.
- Levin, A., Lin, C. F., & James Chu, C. S. (2002). Unit root tests in panel data: asymptotic and finite-sample properties. Journal of econometrics, 108(1), 1-24.
- Lindo, J. M. (2015). Aggregation and the Relationship Between Unemployment and Health, J Health Econ 40, 83-96.
- Miller DL, et al. (2009) Why Are Recessions Good for Health. Am Econ Rev 99, 122-127.
- Murphy, SL, J Xu, and KD Kochanek (2012) Deaths: Preliminary Data for 2010. *National Vital Statistics Reports* 60(4), January 11.
- Mustafic H, et al. (2012) Main Air Pollutants and Myocardial Infarction: A Systematic Review and Meta-Analysis. Journal of the American Medical Association 307(7), 713-721.

- Neumayer E (2004) Recessions Lower (Some) Mortality Rates. Soc Sci Med 58, 1037-47.
- Peters A, et al. (2004) Exposure to Traffic and the Onset of Acute Myocardial Infarction. New Engl J Med 351(17), 1721-30.
- Pierce JR, Denison AV (2006) Place-of-residence Errors on Death Certificates for Two Contiguous U.S. Counties. Population Health Metrics 4(1), 6.
- Pope, C. A., Muhlestein, J. B., May, H. T., Renlund, D. G., Anderson, J. L., & Horne, B. D. (2006). Ischemic heart disease events triggered by short-term exposure to fine particulate air pollution. Circulation, 114(23), 2443-2448.
- Ravn M, and H Uhlig (2002) On Adjusting the Hodrick-Prescott Filter for the Frequency of Observations. Review of Economics and Statistics 84, 371-376.
- Ruhm CJ (1995) Economic Conditions and Alcohol Problems. J Health Econ 14, 583-603.
- Ruhm CJ (2000) Are Recessions Good For Your Health? Q J Econ 115, 617-50.
- Ruhm CJ (2005) Healthy Living in Hard Times. J Health Econ 24, 341-63.
- Ruhm CJ (2012) Understanding the Relationship Between Macroeconomic Conditions and Health. In AM Jones (ed.) Elgar Companion to Health Economics, 2nd Edition. Cheltenham, UK: Edward Elgar. 5-14.
- Ruhm CJ (2015) Recessions, Healthy No More? J Health Econ 42, 17-28.
- Solon, Gary, Steven J. Haider and Jeffrey Wooldridge (2015). What are We Weighting For? Journal of Human Resources, 50(2), 301-316.
- Samet, J., Zeger, S., Kelsall, J., Xu, J., & Kalkstein, L. (1998). Does Weather Confound or Modify the Association of Particulate Air Pollution with Mortality?: An Analysis of the Philadelphia Data, 1973–1980. Environmental Research, 77(1), 9-19.

Schaller, J. (2012). For richer, if not for poorer? Marriage and divorce over the business cycle.

Journal of Population Economics, 1-27.

Schlenker, W., & Walker, W. R. (2011). Airports, air pollution, and contemporaneous health

NBER Working Paper No. w17684.

Schwartz, J. (1994). Air pollution and daily mortality: a review and meta analysis.

Environmental research, 64(1), 36-52.

Smith V, Wolloh C. (2012). Has surface water quality improved since the Clean Water Act?

NBER Working Paper No. 18192.

Stevens, AH, DL Miller, M Page and M Filipski (2011) The Best of Times, the Worst of Times:

Understanding Pro-cyclical Mortality, NBER Working Paper No. 17657.

US EPA (2010) Integrated Science Assessment for Carbon Monoxide (Final report).

EPA/600/R09/019F.

Wellenius, G, M Burger, B Coull, J Schwartz, H Suh, P Koutrakis, G Schlaug, D Gold, M

Mittleman (2012) Ambient Air Pollution and the Risk of Acute Ischemic Stroke. Archives of Internal Medicine 172, 229-234.

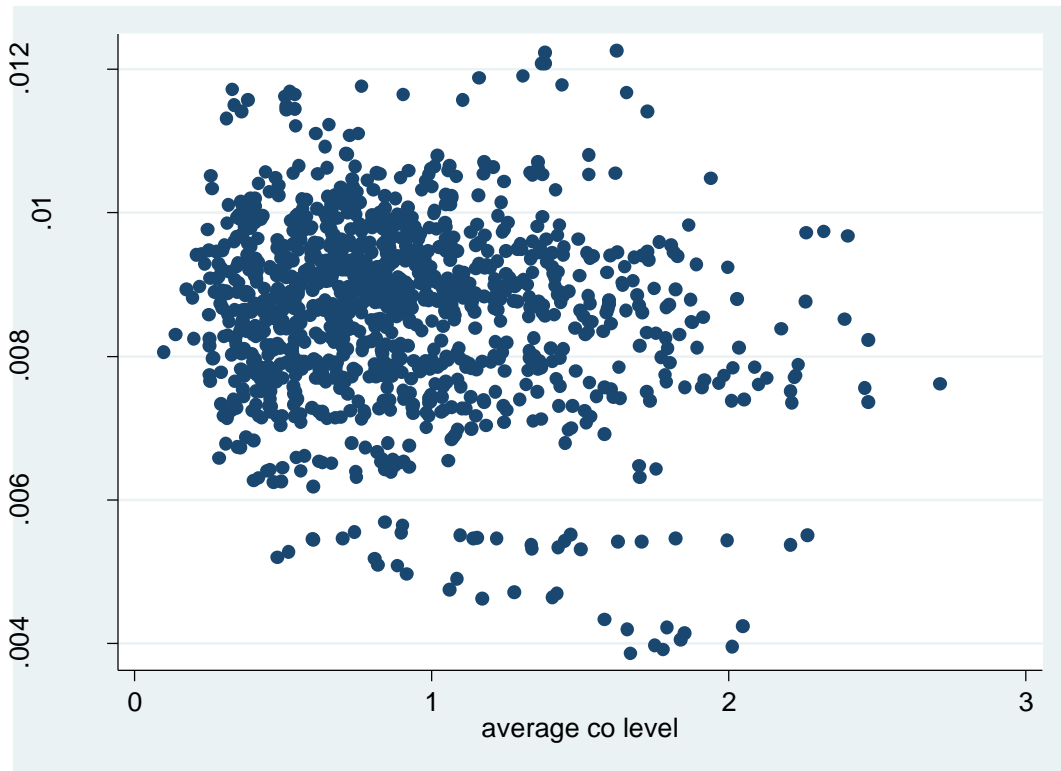
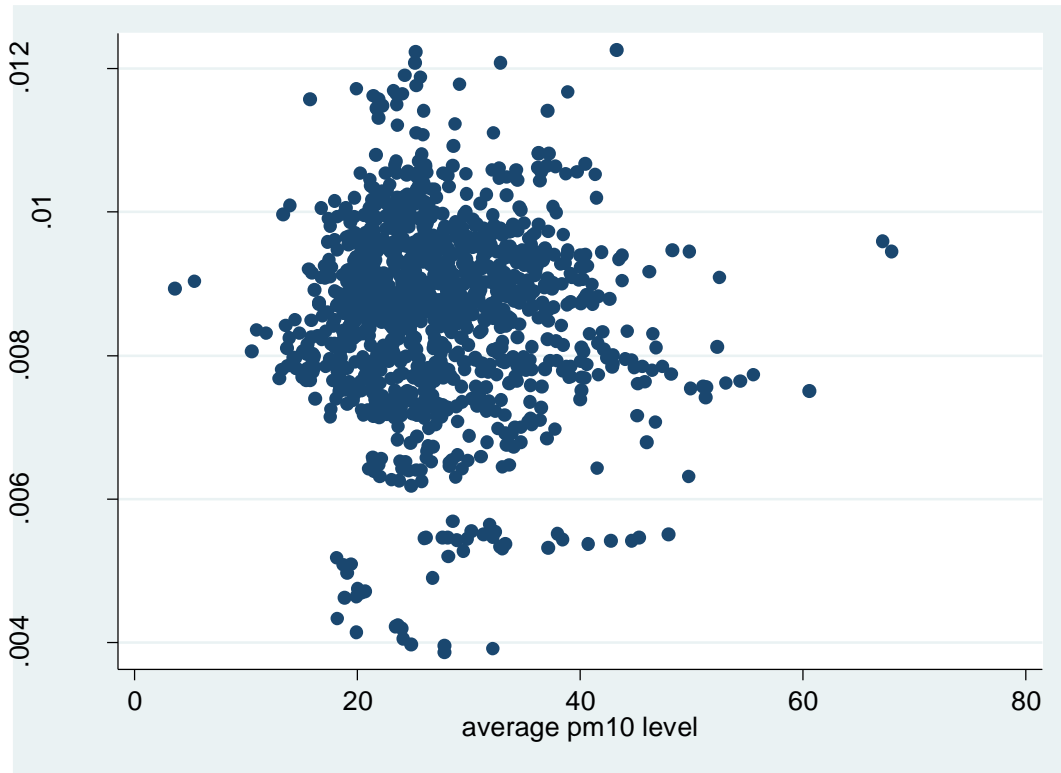
Wooldridge, Jeffrey (1999) Asymptotic Properties of Weighted M-Estimators for Variable

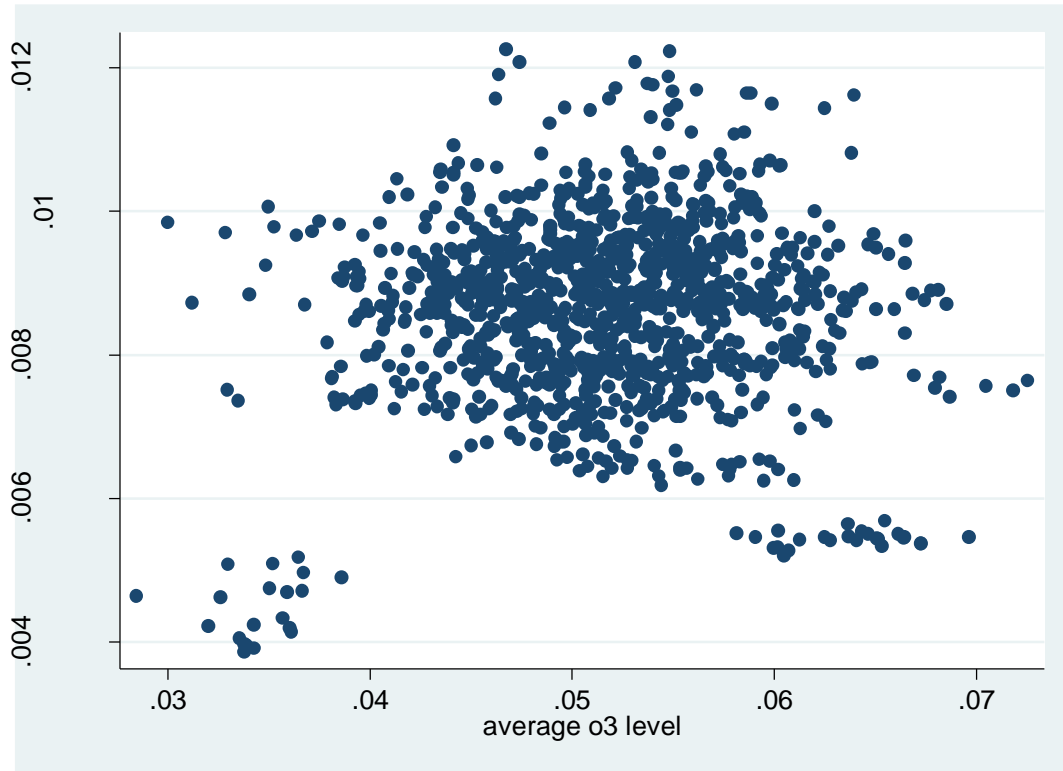
Probability Samples. Econometrica, 67(6), 1385-1406.

Xu Xin (2013) The Business Cycle and Health Behaviors. Social Science and Medicine 77, 126-

136.

Figure 1: Unadjusted Scatterplots of Pollution Levels versus Mortality Rates





Note: Each panel plots the state-year observations of the average (non-standardized) pollution level versus the total mortality rate for the 1,160 state-year observations included in the state-level data set are plotted.

Table 1: Selected Variable Means for In-Sample and Out-of-Sample Counties

	In-Sample		Out-of-Sample	
	Mean	Standard Error	Mean	Standard Error
County unemployment rate (%)	5.489	0.027	6.754	0.013
<u>Mortality Rates (per 1000)</u>				
Total	8.196	0.023	10.301	0.010
Respiratory {466-496}, [J20-J47, U04]	0.570	0.003	0.727	0.001
Cardiovascular {390-448}, [I00-I78]	3.253	0.012	4.332	0.005
Acute Myocardial Infarction {410}, [I21-I22]	0.727	0.004	1.195	0.003
Ischemic Heart Disease {410-414}, [I20-I25]	1.316	0.009	1.813	0.004
Cerebrovascular Disease {430-438}, [I60-I69]	0.544	0.002	0.757	0.001
Cancer (140-208), [C00-C97]	1.922	0.005	2.257	0.003
Accident {E800-E869, E880-E929}, [V01-X59, Y85-Y86]	0.353	0.001	0.551	0.001
Vehicle Accident {E810-E825}, [V02-V89]	0.158	0.001	0.29	0.001
Non-vehicle Accident {E800-E807, E826-E949}, [V90-X59, Y85-Y86]	0.199	0.001	0.291	0.001
Suicide {E950-E959}, [X60-X84, Y87.0]	0.121	0.001	0.171	0.000
Homicide {E960-E978}, [X85-Y09, Y87.1, Y35, Y89.0]	0.072	0.001	0.112	0.000
< 1 year old	8.314	0.061	12.21	0.040
1-19 years old	0.381	0.003	0.623	0.002
20-44 years old	1.438	0.006	1.721	0.003
45-54 years old	4.303	0.015	4.879	0.008
55-64 years old	10.446	0.030	11.257	0.014
65-74 years old	24.852	0.056	25.514	0.024
75-84 years old	58.500	0.094	59.168	0.046
≥ 85 years old	154.63	0.245	156.607	0.138
<u>State Population Shares</u>				
< 1 year old	0.014	0.000	0.014	0.000
1-19 years old	0.271	0.000	0.277	0.000
20-44 years old	0.381	0.000	0.336	0.000
45-54 years old	0.125	0.000	0.121	0.000
55-64 years old	0.090	0.000	0.102	0.000
65-74 years old	0.066	0.000	0.082	0.000
75-84 years old	0.040	0.000	0.051	0.000
≥ 85 years old	0.013	0.000	0.018	0.000
Female	0.511	0.000	0.506	0.000
Black	0.111	0.001	0.088	0.001
Other nonwhite	0.037	0.000	0.025	0.000

Note: Summary statistics are over the county-year observations, from 1982-2009. The left half of the table includes those 8,876 observations for which we have PM10, CO, and O₃ concentrations and data on all control variables. The right half includes all of the other observations. ICD-9 codes for specific causes of death categories applying from 1982-1998 are shown in curly brackets; corresponding ICD-10 codes, used from 1999 on are displayed in square brackets.

Table 2: Relationship between Pollution and Unemployment Rates

Regressor	<u>County Pollution Level</u>					
	PM 10		CO		O ₃	
	(1)	(2)	(3)	(4)	(5)	(6)
County unemployment rate (%)	-0.0153 (0.0388)	-0.0568* (0.0289)	-0.00711 (0.0278)	-0.0398* (0.0215)	-0.00168 (0.0290)	-0.0319 (0.0258)
Demographic controls	No	Yes	No	Yes	No	Yes
R-squared	0.885	0.895	0.905	0.925	0.934	0.937

Note: *** p<0.01, ** p<0.05, * p<0.1. Standard errors clustered at the state are in parentheses (n=8,876). Dependent variable is the ambient pollution measure (PM10 or CO), standardized (mean zero, standard deviation one). State- by-year-fixed effects are included but not reported. Even-numbered columns also include controls for the share of county residents who are female, black, other nonwhite, and seven age groups (<1, 1-19, 45-54, 55-64, 65-75, 75-84 and ≥85 years old). Regressions are weighted by the county population.

Table 3: Econometric Estimates of the Determinants of Total Mortality

Regressor	(1)	(2)	(3)	(4)	(5)
County unemployment rate (%)	-0.00346 (0.00330)	-0.00316 (0.00317)	-0.00285 (0.00301)	-0.00349 (0.00328)	-0.00286 (0.00306)
PM10		0.00544*** (0.00108)			0.00285* (0.00157)
CO			0.0156*** (0.00436)		0.0160*** (0.00526)
O ₃				-0.000771 (0.00223)	-0.00594* (0.00228)
F-statistic from Wald test (P-value)		4.51 (0.0337)	2.63 (0.1052)	0.17 (0.6845)	3.76 (0.0524)
Z-statistic from Gelbach test (P-value)		2.09 (0.037)	1.59 (0.112)	0.36 (0.717)	1.90 (0.057)
R-squared	0.988	0.988	0.988	0.988	0.988

Note: *** p<0.01, ** p<0.05, * p<0.1. The dependent variable is the natural log of the total mortality rate (n=8,876). State-by-year-fixed effects are included but not reported. All models also include controls for the share of county residents who are female, black, other nonwhite, and seven age groups (<1, 1-19, 45-54, 55-64, 65-75, 75-84 and ≥85 years old). Regressions are weighted by the county population. Standard errors, clustered at the state level, are reported in parentheses. The F-statistic and Z-statistic refer to tests on whether the unemployment coefficients in models (2) through (5) differ significantly from that in in model (1). The Z-statistic uses the procedure described in Gelbach (forthcoming).

Table 4: Econometric Estimates of Determinants of Age-Specific Mortality

Regressor	< 1 Year Olds		1-19 Year Olds		20-44 Year Olds		45-54 Year Olds	
	(a)	(b)	(a)	(b)	(a)	(b)	(a)	(b)
County unemployment rate (%)	0.00272 (0.00602)	0.00435 (0.00533)	0.00411 (0.00651)	0.00346 (0.00650)	-0.00689 (0.00913)	-0.00519 (0.00850)	-0.00360 (0.00651)	-0.00287 (0.00595)
PM10		-0.000862 (0.00904)		-0.0103* (0.00608)		-0.00203 (0.00776)		-0.000927 (0.00295)
CO		0.0501*** (0.0150)		0.0106 (0.0186)		0.0532** (0.0214)		0.0193 (0.0127)
O3		-0.0171*** (0.00635)		-0.0124 (0.00773)		-0.0171** (0.00757)		-0.00288 (0.00411)
	55-64 Year Olds		65-74 Year Olds		75-84 Year Olds		>84 Year Olds	
	(a)	(b)	(a)	(b)	(a)	(b)	(a)	(b)
County unemployment rate (%)	-0.00312 (0.00231)	-0.00283 (0.00214)	-0.00154 (0.00278)	-0.00119 (0.00255)	-0.00301 (0.00203)	-0.00266 (0.00175)	-0.00503** (0.00197)	-0.00449*** (0.00153)
PM10		0.00268 (0.00295)		0.00295* (0.00175)		0.000238 (0.00183)		0.000602 (0.00181)
CO		0.00923 (0.00623)		0.00659 (0.00474)		0.00859 (0.00655)		0.0102** (0.00506)
O3		-0.00835** (0.00400)		-0.00393* (0.00200)		-0.00178 (0.00291)		0.000578 (0.00307)

Note: *** p<0.01, ** p<0.05, * p<0.1. The dependent variables are natural logs of the specified age-specific mortality rate. All models control for state-by-year-fixed effects and county-year level demographic characteristics. Observations are weighted by the county population within each age group. Standard errors, clustered at the state level, are reported in parentheses. For 20-44 year old deaths, the unemployment coefficient is significantly different between columns a and b. In all other columns, there is no statistically significant difference between the unemployment coefficient in columns a and b.

Table 5: Econometric Estimates of the Determinants of Mortality from Specific Diseases

Regressor	Respiratory		Cardiovascular		Heart Attack	
	(a)	(b)	(a)	(b)	(a)	(b)
County unemployment rate (%)	-0.00356 (0.00691)	-0.00205 (0.00669)	-0.00658 (0.00420)	-0.00612 (0.00385)	-0.00270 (0.00767)	-0.00242 (0.00738)
PM10		0.00903 (0.00711)		0.00465* (0.00264)		-0.00449 (0.00624)
CO		0.0304** (0.0138)		0.00922* (0.00520)		0.0181 (0.0129)
O ₃		-0.00641 (0.0117)		-0.00545 (0.00476)		-0.00588 (0.0127)
	Ischemic Heart Disease		Stroke		Cancer	
	(a)	(b)	(a)	(b)	(a)	(b)
County unemployment rate (%)	0.00446 (0.0111)	0.00492 (0.0111)	-0.00416 (0.00280)	-0.00337 (0.00289)	0.000730 (0.00122)	0.000930 (0.00122)
PM10		0.000578 (0.00945)		0.000745 (0.00375)		0.000897 (0.00149)
CO		0.0255* (0.0144)		0.00985* (0.00506)		0.00525** (0.00205)
O ₃		-0.0182 (0.0120)		0.0111 (0.00700)		-0.00187 (0.00272)

Note: *** p<0.01, ** p<0.05, * p<0.1. The dependent variables are natural logs of the specified cause-specific mortality rate (n=8,876). All models control for state-by-year-fixed effects and county-year level demographic characteristics. Observations are weighted by the county population. Standard errors, clustered at the state level, are reported in parentheses. For respiratory deaths, the unemployment coefficient is significantly different between columns a and b. In all other columns, there is no statistically significant difference between the unemployment coefficient in columns a and b.

Table 6: Econometric Estimates of the Determinants of External Causes of Death

Regressor	Vehicle Accident		Non-Vehicle Accident	
	(a)	(b)	(a)	(b)
County unemployment rate (%)	-0.00471 (0.00323)	-0.00534 (0.00338)	0.00836 (0.0104)	0.0101 (0.00915)
PM10		-0.00398 (0.00665)		0.0232*** (0.00748)
CO		-0.00117 (0.0136)		0.0148 (0.0139)
O ₃		-0.0114 (0.00979)		-0.00517 (0.00844)
	Suicide		Homicide	
	(a)	(b)	(a)	(b)
County unemployment rate (%)	0.0112 (0.0140)	0.00950 (0.0120)	0.00751 (0.0116)	0.00750 (0.0113)
PM10		-0.00442 (0.0166)		-0.0116 (0.0138)
CO		-0.0342 (0.0525)		0.0320 (0.0308)
O ₃		-0.00121 (0.0141)		-0.0194 (0.0163)

Note: *** p<0.01, ** p<0.05, * p<0.1. The dependent variables are the natural logs of the specified cause-specific mortality rate (n=8,876). All models control for state-by-year-fixed effects and county-year level demographic characteristics. Observations are weighted by county population. Standard errors, clustered at the state level, are reported in parentheses. There is no statistically significant difference between the unemployment coefficient in columns a and b.

Table 7: Econometric Estimates of County Level Total Mortality, Controlling for State Unemployment Rate

Regressor	(1)	(2)	(3)	(4)	(5)
State unemployment rate (%)	-0.00419*** (0.00116)	-0.00399*** (0.00110)	-0.00349*** (0.00115)	-0.00418*** (0.00115)	-0.00340*** (0.00111)
PM10		0.00695*** (0.00180)			0.00520*** (0.00150)
CO			0.0164*** (0.00536)		0.0154*** (0.00527)
O ₃				0.000831 (0.00426)	-0.00316 (0.00352)
R-squared	0.988	0.988	0.988	0.988	0.988

Note: *** p<0.01, ** p<0.05, * p<0.1. The dependent variable is the natural log of the total mortality rate (n=8,876). County- and year-fixed effects and demographic characteristics are included but not reported. Observations are weighted by the county population. Standard errors, clustered at the state level, are reported in parentheses.

Table 8: Robustness Checks: Total Mortality Estimates

Specification	Model		
	(1)	(2)	(3)
Without Pollution Controls	-0.00346** (0.00169)	-0.00222 (0.00179)	-0.00344** (0.00169)
With Pollution Controls	-0.00286* (0.00164)	-0.00195 (0.00179)	-0.00303* (0.00166)
Description	Main Model	No Population Weights	No Pollution Monitor Weighting
	(4)	(5)	(6)
Without Pollution Controls	-0.00394** (0.00171)	-0.00346** (0.00169)	-0.00305* (0.00168)
With Pollution Controls	-0.00330** (0.00167)	-0.00294* (0.00162)	-0.00259 (0.00164)
Description	1985-2009	Quadratic Pollution Controls	Age-Adjusted Mortality
	(7)	(8)	(9)
Without Pollution Controls	-0.00295*** (0.000893)	-3.58e-05*** (1.32e-06)	-0.00555** (0.00217)
With Pollution Controls	-0.00252*** (0.000829)	-3.17e-05*** (8.58e-06)	-0.00510** (0.00208)
Description	State-Specific Time Trends Included	Mortality in Levels (Not Logs)	Only Counties with Monitors

Note: *** $p < 0.01$, ** $p < 0.05$, * $p < 0.1$. See the text for a description of each column's specification. Table shows the unemployment rate coefficient. The dependent variables are natural logs of the total mortality rate, except for model (9), where the mortality rate is not logged. All models control for county- and state-by-year-fixed effects and demographic characteristics. The second row of each model also includes controls for the three pollution measures, whereas the first row does not. Observations are weighted by the county population except in model 2. Standard errors, clustered at the county level, are reported in parentheses.

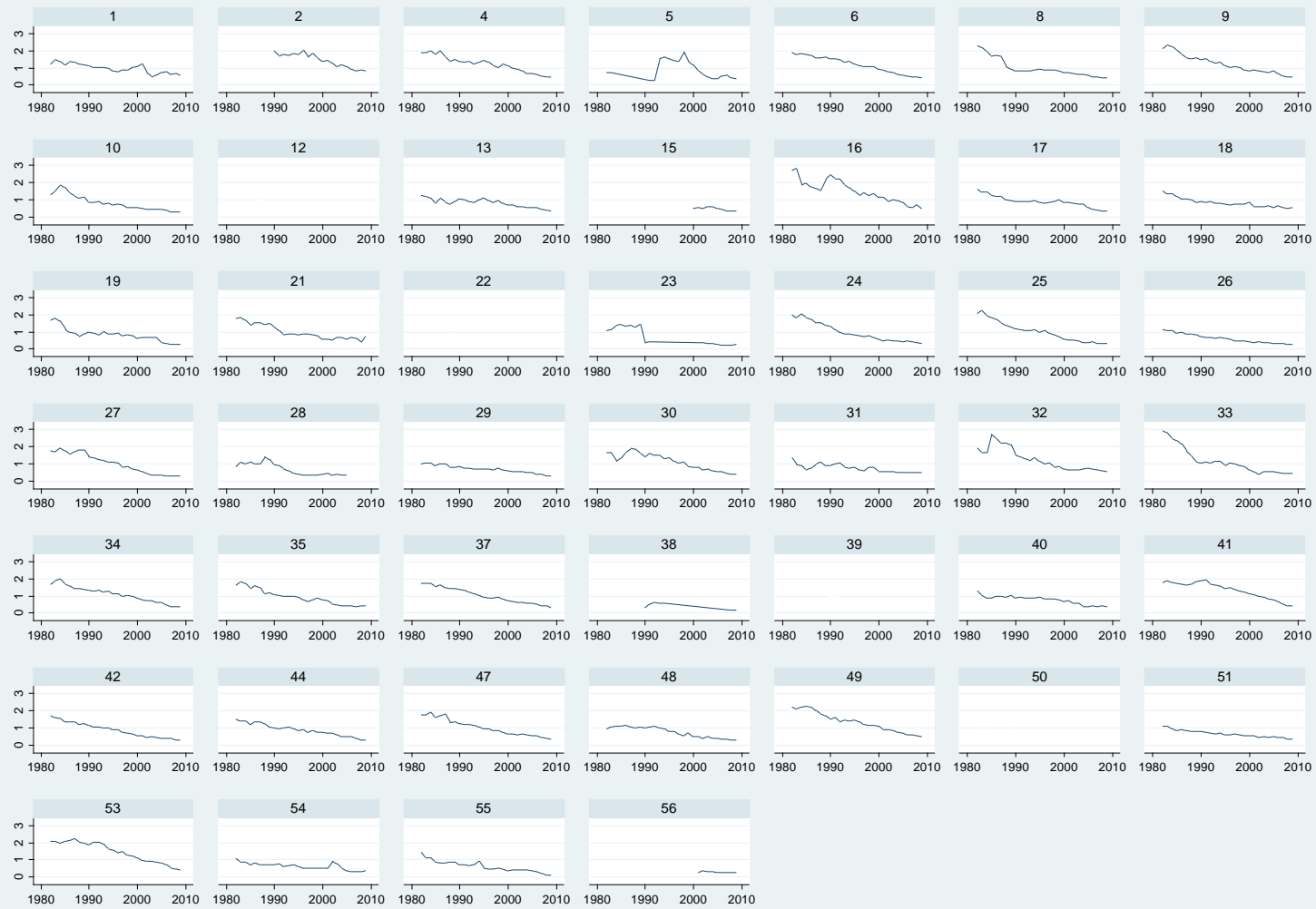
Table 9: Comparison of Estimated Pollution Effects Based on Previous Research and Current Analysis

	(1)	(2)	(3)	(4)	(5)	(6)	(7)	(8)	(9)
Paper	Currie and Neidell (2005)	Chay and Greenstone (2003)	Knittel et al. (2011)	Knittel et al. (2011)	Mustafic et al. (2012)	Mustafic et al. (2012)	Clancy et al. (2002)	Clancy et al. (2002)	Wellenius et al. (2012)
Pollutant	CO	TSP/PM10	CO	PM10	CO	PM10	PM10	PM10	PM2.5/PM10
Outcome	Infant mortality	Infant mortality	Infant mortality	Infant mortality	Heart Attacks	Heart Attacks	Respiratory Deaths	Cardiovascular Deaths	Stroke
<u>Estimated Effect of a One Unit Pollution Increase on Mortality¹ Based On:</u>									
Previous Research	18.1	1.00	17.1	18.0	0.0550	0.000600	0.00443	0.00294	0.00103
Current Research	30.3	1.39	30.3	1.39	0.0642	0	0.000342	0	0
<u>Change in Cyclical Deaths Explained By Pollution Based On:</u>									
Previous Research	5.56%	8.46%	5.24%	153%	8.19%	2.47%	110%	36.3%	6.81%
Current Research	9.29%	11.8%	9.29%	11.8%	9.58%	0%	8.47%	0%	0%

¹Units are deaths per 100,000 live births (change in death rate), in response to a one-unit change in pollution, in columns 1 through 4 (5 through 9). CO units are parts per million (ppm); PM10 units are $\mu\text{g}/\text{m}^3$.

Appendix A: Supplementary Figures and Tables (For Online Publication)

Appendix Figure A1: Ambient Carbon Monoxide Concentrations by State-Year



Graphs by state FIPS code

Appendix Figure A2: Ambient PM10 Concentrations by State-Year



Graphs by state FIPS code

Appendix Figure A3: Ambient Ozone Concentrations by State-Year



Graphs by state FIPS code

Appendix Table A1:

	(1)	(2)	(3)	(4)
PM10	-0.0978*** (0.0304)	-0.0982*** (0.0272)	-0.0267 (0.0292) [0.0263]	-0.0153 (0.0264) [0.0196]
CO	-0.0492** (0.0212)	-0.0141 (0.0178)	-0.0399*** (0.0125) [0.0107]	-0.0211* (0.0119) [0.0105]
O3	-0.0141 (0.0178)	-0.0130 (0.0279)	-0.00392 (0.0250) [0.0249]	0.0147 (0.0108) [0.0124]
Level	State	State	County	County
Fixed Effects	State and Year	State and Year	County and Year	County and Year
Trends	None	State-specific	None	County-Specific
	(5)	(6)	(7)	(8)
PM10	-0.0185 (0.0304) [0.0240]	-0.0568* (0.0289) [0.0287]	-0.0285 (0.0263)	-0.00249 (0.0274)
CO	-0.0344** (0.0134) [0.00926]	-0.0398* (0.0215) [0.0198]	-0.0478** (0.0192)	-0.0175 (0.0128)
O3	-0.00818 (0.0231) [0.0212]	-0.0319 (0.0258) [0.0261]	-0.00392 (0.0284)	0.0312*** (0.0105)
Level	County	County	County (State Unemployment)	County (State Unemployment)
Fixed Effects	County and Year	State-by-Year	County and Year	County and Year
Trends	State-Specific	None	None	County-specific

Notes: Each entry represents a separate regression, and provides the coefficient and standard error on the standardized pollution measure (PM10, CO, or O3) where the dependent variable is the unemployment rate. Standard errors clustered at the state level are presented in parentheses, and for the county-level regressions, the standard errors clustered at the county level are presented in brackets. *** p<0.01, ** p<0.05, * p<0.1, based on the state-clustered standard errors. All regressions include the indicated fixed effects and trends, and county-year or state-year level demographic variables as described in the text.

Appendix Table A2:

	(1a)	(1b)	(2a)	(2b)	(3a)	(3b)	(4a)	(4b)
Unemployment	-0.00330** (0.00133)	-0.00288** (0.00122)	-0.00151** (0.000739)	-0.00153** (0.000726)	-0.00134 (0.00195) [0.00114]	-0.000602 (0.00185) [0.00110]	-0.00203* (0.00108) [0.000853]	-0.00201* (0.00103) [0.000824]
PM10		-0.000742 (0.00297)		-6.11e-05 (0.00145)		0.00533*** (0.00166) [0.00164]		0.00259** (0.00101) [0.00107]
CO		0.0104* (0.00600)		-0.00167 (0.00254)		0.0151** (0.00707) [0.00558]		-0.00212 (0.00202) [0.00201]
O3		-0.00129 (0.00275)		0.000604 (0.00124)		-0.00268 (0.00296) [0.00367]		-0.00228 (0.00213) [0.00196]
Level	State	State	State	State	County	County	County	County
Fixed Effects	State and Year	State and Year	State and Year	State and Year	County and Year	County and Year	County and Year	County and Year
Trends	None	None	State-specific	State-specific	None	None	County-specific	County-specific
Clustering	State	State	State	State	County	County	County	County
	(5a)	(5b)	(6a)	(6b)	(7a)	(7b)	(8a)	(8b)
Unemployment	-0.00148 (0.00184) [0.000921]	-0.00103 (0.00165) [0.000854]	-0.00346 (0.00330) [0.00169]	-0.00286 (0.00306) [0.00164]	-0.00430** (0.00182)	-0.00346** (0.00166)	-0.00142 (0.00114)	-0.00137 (0.00112)
PM10		0.00412*** (0.00106) [0.00124]		0.00285* (0.00157) [0.00199]		0.00529*** (0.00161)		0.00260** (0.00101)
CO		0.0122*** (0.00399) [0.00288]		0.0160*** (0.00526) [0.00359]		0.0148** (0.00696)		-0.00167 (0.00200)
O3		-0.00526*** (0.00174) [0.00254]		-0.00594** (0.00228) [0.00312]		-0.00279 (0.00296)		-0.00239 (0.00219)
Level	County	County	County	County	County (State Unemployment)	County (State Unemployment)	County (State Unemployment)	County (State Unemployment)
Fixed Effects	County and Year	County and Year	State-by-Year	State-by-Year	County and Year	County and Year	County and Year	County and Year
Trends	State-Specific	State-Specific	None	None	None	None	County-specific	County-specific
Clustering	County	County	County	County	County (State Unemployment)	County (State Unemployment)	County (State Unemployment)	County (State Unemployment)

Notes: Each column represents a single regressions, and provides the coefficient and standard error on unemployment (included in both (a) and (b) columns) and on the three standardized pollution measures (included in just the (b) columns), where the dependent variable is the log of the total mortality rate. Standard errors

clustered at the state level are presented in parentheses, and for the county-level regressions, the standard errors clustered at the county level are presented in brackets. *** $p < 0.01$, ** $p < 0.05$, * $p < 0.1$, based on the state-clustered standard errors. All regressions include the indicated fixed effects and trends, and county-year or state-year level demographic variables as described in the text.

Appendix Table A3: Relationship between Pollution and Unemployment Rates

Regressor	County Pollution Level					
	PM 10 (1)	PM 10 (2)	CO (3)	CO (4)	O ₃ (5)	O ₃ (6)
County unemployment rate (%)	-0.0153 (0.0284)	-0.0568** (0.0287)	-0.00711 (0.0278)	-0.0398** (0.0198)	-0.00168 (0.0214)	-0.0319 (0.0261)
<1 year old		125.4** (62.10)		77.67 (73.19)		69.58 (51.40)
1-19 years old		14.44** (6.102)		22.30*** (5.577)		5.889 (6.920)
45-54 years old		27.51*** (8.557)		25.28*** (6.479)		3.981 (8.859)
55-64 years old		34.57*** (8.195)		29.73*** (10.26)		22.12*** (7.532)
65-74 years old		7.434 (10.20)		15.59 (9.655)		-4.931 (8.260)
75-84 years old		20.16 (14.49)		43.96*** (13.67)		20.52** (9.296)
≥85 years old		-40.98 (29.01)		-4.082 (26.89)		-14.06 (30.94)
female		-20.02 (22.29)		-37.52** (18.65)		-12.09 (13.12)
black		2.958 (2.379)		3.363 (2.820)		2.591 (2.155)
other nonwhite		-0.623 (3.524)		-4.321 (3.565)		1.065 (3.190)
constant		34.57*** (8.195)		29.73*** (10.26)		22.12*** (7.532)
R-squared	0.885	0.895	0.905	0.925	0.934	0.937

Note: *** p<0.01, ** p<0.05, * p<0.1. Dependent variable is the ambient pollution measure, PM10, CO or O₃, standardized to have a mean of zero and a standard deviation of one (n=8,876). County- and state-by-year-fixed effects are included but not reported. All regressors other than the unemployment rate refer to county population shares. Regressions are weighted by county population. Robust standard errors clustered at the county level are in parentheses.

Note: *** $p < 0.01$, ** $p < 0.05$, * $p < 0.1$. Dependent variable is the ambient pollution measure, PM10, CO or O₃, standardized to have a mean of zero and a standard deviation of one (n=8,876). County- and state-by-year-fixed effects are included but not reported. All regressors other than the unemployment rate refer to county population shares. Regressions are weighted by county population. Robust standard errors clustered at the county level are in parentheses.

Appendix Table A5: Errors-in-Variables Regressions

Regressor	(1) Base Case	(2) R = 0.99	(3) R = 0.98	(4) R = 0.97	(5) R = 0.96
County unemployment rate (%)	-0.00286*** (0.000556)	-0.00280*** (0.000554)	-0.00274*** (0.000552)	-0.00265*** (0.000547)	-0.00254*** (0.000530)
PM10	0.00285*** (0.000764)	0.00275*** (0.000871)	0.00242** (0.00102)	0.00155 (0.00125)	-0.00130 (0.00166)
CO	0.0160*** (0.00107)	0.0192*** (0.00129)	0.0243*** (0.00165)	0.0342*** (0.00233)	0.0637*** (0.00432)
O ₃	-0.00594*** (0.00102)	-0.00805*** (0.00126)	-0.0118*** (0.00164)	-0.0200*** (0.00239)	-0.0481*** (0.00463)
Constant	-5.868*** (0.133)	-5.871*** (0.133)	-5.878*** (0.132)	-5.892*** (0.131)	-5.942*** (0.127)
Observations	8,876	8,876	8,876	8,876	8,876
R-squared	0.988	0.988	0.988	0.988	0.989

Notes: Each column replicates the regression for our main specification where the dependent variable is the log of the mortality rate (column 5 in Table 3). Regressions are weighted by county population. Column 1 is the base case, and columns 2-5 are EIV regressions with alternative reliability ratios ranging from 0.99 to 0.96. Non-robust standard errors are in parentheses. *** p<0.01, ** p<0.05, * p<0.1

Appendix B: State-Level Results

As mentioned, we re-estimated most models presented in the main text of the paper using state level data. When doing so, we used a different procedure to calculate state-year pollution levels. For states with only one monitor, we used the annual arithmetic mean of that monitor's pollution concentration readings. For states with multiple monitors, we used the annual arithmetic mean reading for each monitor, weighted by the population of the county in which it is located, and then multiplied by the percent of total potential observations from the monitor where pollution was actually observed. For instance, a monitor that only reported daily observations for one half of the year was discounted by 50%. The resulting dataset spanned 1982-2009 and contained 1,333 state-year level observations of CO concentrations (not every state is represented in all years), 1,270 observations of PM10 concentrations, and 1,378 observations of O₃ concentrations.⁶⁴ We restricted analysis to the 1,160 state-year observations, from 1982-2009, containing information on all three pollutants. The number of states represented from 1985 through 2009 varied from 40 to 47, but before 1985 there were never more than 13 states represented.⁶⁵ Appendix Table B1 presents summary statistics at the state level, including the state-year level demographic variables that were not included in the county-level analysis with state-by-year fixed effects.

Appendix Tables B2 through B6 replicate Tables 2 through 6 at the state level.⁶⁶

Qualitatively the results replicate those previously obtained using state data, but there are some

⁶⁴ PM10 monitoring is quite limited in the early years, between 2 and 15 states had monitors prior to 1985, but the majority of states did so in subsequent years.

⁶⁵ Oregon and South Dakota are the only two states in the sample for all 28 years. Indiana, Iowa, New Jersey, and Vermont appear in 27 out of 28 years. The states appearing the fewest years are Wyoming (9 years), North Dakota (6 years), and South Dakota (1 year). All of the regression results presented below are robust to dropping observations from before 1985.

⁶⁶ As discussed, we add controls for a number of demographic variables where useful information is available at the state but not the county level (e.g. education shares, weather variables, and the Gini coefficient) but cannot also include state-by-year fixed effects. Results for some of these deserve mention. Precipitation is significantly

persistent differences in coefficient magnitudes and statistical significance. The correlation between pollution and unemployment (Table 2 and Appendix Table B2) is larger and more significant at the state than the county level. The associations between total mortality and unemployment (Table 3 and Appendix Table B3) are almost identical in magnitude as at the county level. By contrast, Lindo (2015) finds a reduction in the magnitude when moving from the state to the county level. The coefficient on CO is slightly smaller at the state level and less significant (10% rather than 1%). The most substantial difference is that the PM10 coefficient is not significant at the state level but, whether or not other emissions are included. Controlling for all pollutants attenuates the correlation between unemployment and mortality by 13% at the state level.

The age-specific mortality regressions (Table 4 and Appendix Table B4) vary somewhat between the state and county levels. At the state level, mortality is procyclical for all eight age groups, significantly so for five of them, and the magnitude of the estimated procyclicality is larger at the state level for all age groups except the oldest. CO is positively correlated with mortality for all age groups at the state level, but only significant for three age groups. Ozone is significantly negatively correlated with the mortality of just one age group; we surmise that the ozone measure is noisier at the county level than at the state level. For some of the causes of death, the correlations between mortality and unemployment are larger and more significant at the state level (Table 5 and Appendix Table B5), consistent with evidence provided by Lindo (2015). This is true for heart attack, ischemic heart disease, and stroke deaths; the correlations for respiratory and cardiovascular deaths are little changed. At the county level, CO is

negatively correlated with all three pollution measures. The hottest temperature bins are positively correlated with PM10 and O₃, and the coldest temperature bins are positively correlated with CO and negatively correlated with PM10 and O₃. A higher Gini ratio is negatively correlated with CO and O₃ pollution.

statistically significantly correlated with respiratory, cardiovascular, ischemic heart disease, and cancer deaths. There is a barely statistically significant correlation between PM10 or O3 and other causes of death. At the state level, there is stronger evidence of the procyclicality of vehicle accident deaths and countercyclicality of suicides (Table 6 and Appendix Table B6). The unexpected positive correlation between PM10 and non-vehicle accident deaths remains significant at the state level.

Appendix Table B1: Sample Means for Selected Variables – State Level

	Mean	Standard Error
<u>Pollution</u>		
PM10 concentration ($\mu\text{g}/\text{m}^3$)	27.381	0.222
CO concentration (ppm)	0.895	0.013
O ₃ concentration (ppm)	0.052	0.000
State unemployment rate (%)	5.608	0.051
<u>Mortality Rates (per 1000)</u>		
Total	8.617	0.038
Respiratory {466-496}, [J20-J47, U04]	0.585	0.005
Cardiovascular {390-448}, [I00-I78]	3.378	0.023
Acute Myocardial Infarction {410}, [I21-I22]	0.756	0.009
Ischemic Heart Disease {410-414}, [I20-I25]	1.288	0.022
Cerebrovascular Disease {430-438}, [I60-I69]	0.568	0.004
Cancer (140-208), [C00-C97]	1.979	0.009
Accident {E800-E869, E880-E929}, [V01-X59, Y85-Y86]	0.400	0.003
Vehicle Accident {E810-E825}, [V02-V89]	0.178	0.002
Non-vehicle Accident {E800-E807, E826-E949}, [V90-X59, Y85-Y86]	0.223	0.002
Suicide {E950-E959}, [X60-X84, Y87.0]	0.127	0.001
Homicide {E960-E978}, [X85-Y09, Y87.1, Y35, Y89.0]	0.073	0.002
< 1 year old	8.336	0.073
1-19 years old	0.403	0.003
20-44 years old	1.533	0.012
45-54 years old	4.495	0.031
55-64 years old	10.63	0.063
65-74 years old	24.675	0.111
75-84 years old	57.652	0.167
≥ 85 years old	152.447	0.248
<u>State Population Shares</u>		
< 1 year old	0.014	0.000
1-19 years old	0.271	0.001
20-44 years old	0.374	0.001
45-54 years old	0.124	0.001
55-64 years old	0.092	0.000
65-74 years old	0.069	0.000
75-84 years old	0.042	0.000
≥ 85 years old	0.014	0.000
Female	0.510	0.000
Black	0.117	0.003
Other nonwhite	0.039	0.001
High school incomplete	0.353	0.002
High school graduate/12th grade completed	0.232	0.002
Some college/<4 years completed	0.240	0.002
College graduate/4+ years completed	0.510	0.002
<u>Weather</u>		
Annual precipitation (mm, 00s)	37.471	0.443
Temperature (°F)	52.611	0.235

Other Demographic Variables

Gini coefficient	0.570	0.001
Percent of House delegation Democrat	0.559	0.005
Urbanization rate	0.657	0.006

Note: Summary statistics are for the 1,160 state-year observations during 1982-2009 for which we have PM10, CO, and O₃ concentrations. ICD-9 codes for specific causes of death categories, applying from 1982-1998, are shown in curly brackets; corresponding ICD-10 codes, used from 1999 on, are displayed in square brackets.

Appendix Table B2: Relationship between Pollution and Unemployment Rates at State Level

Regressor	State Pollution Level					
	PM 10 (1)	PM 10 (2)	CO (3)	CO (4)	O ₃ (5)	O ₃ (6)
State unemployment rate (%)	-0.107*** (0.0369)	-0.0978*** (0.0304)	-0.0621** (0.0271)	-0.0492** (0.0212)	-0.0727** (0.0350)	-0.0130 (0.0279)
Demographic controls	No	Yes	No	Yes	No	Yes
R-squared	0.821	0.847	0.865	0.908	0.698	0.825

Note: *** p<0.01, ** p<0.05, * p<0.1. Standard errors clustered at the state are in parentheses (n=1,160). Dependent variable is the ambient pollution measure (PM10 or CO), standardized (mean zero, standard deviation one). State- and year-fixed effects are included but not reported. Even-numbered columns also include controls for the share of state residents who are female, black, other nonwhite, seven age groups (<1, 1-19, 45-54, 55-64, 65-75, 75-84 and ≥85 years old), precipitation, temperature bins, Gini coefficient, the political measure, and the urbanization rate. Regressions are weighted by the state population.

Appendix Table B3: Econometric Estimates of the Determinants of Total Mortality at State Level

Regressor	(1)	(2)	(3)	(4)	(5)
State unemployment rate (%)	-0.00330** (0.00133)	-0.00332** (0.00125)	-0.00279** (0.00127)	-0.00333** (0.00133)	-0.00288** (0.00122)
PM10		-0.000205 (0.00306)			-0.000742 (0.00297)
CO			0.0104 (0.00625)		0.0104* (0.00600)
O ₃				-0.00181 (0.00283)	-0.00129 (0.00275)
R-squared	0.988	0.988	0.989	0.988	0.989

Note: *** p<0.01, ** p<0.05, * p<0.1. Standard errors clustered at the state are in parentheses (n=1,160). Dependent variable is the ambient pollution measure (PM10 or CO), standardized (mean zero, standard deviation one). State- and year-fixed effects are included but not reported. Even-numbered columns also include controls for the share of state residents who are female, black, other nonwhite, seven age groups (<1, 1-19, 45-54, 55-64, 65-75, 75-84 and ≥85 years old), precipitation, temperature bins, Gini coefficient, the political measure, and the urbanization rate. Regressions are weighted by the state population.

Appendix Table B4: Econometric Estimates of Determinants of Age-Specific Mortality at State Level

Regressor	< 1 Year Olds		1-19 Year Olds		20-44 Year Olds		45-54 Year Olds	
	(a)	(b)	(a)	(b)	(a)	(b)	(a)	(b)
Unemployment rate (%)	-0.00778** (0.00376)	-0.00630* (0.00348)	-0.0125*** (0.00424)	-0.0124*** (0.00407)	-0.000712 (0.00464)	0.000622 (0.00376)	-4.73e-05 (0.00253)	0.000353 (0.00239)
PM10		0.00448 (0.00705)		-0.00228 (0.00767)		-0.00190 (0.00971)		-0.00172 (0.00645)
CO		0.0243** (0.0110)		0.00933 (0.0102)		0.0327 (0.0220)		0.0146 (0.0125)
O ₃		-0.0168** (0.00693)		-0.00810 (0.00865)		-0.0134 (0.00973)		-0.00395 (0.00593)

Regressor	55-64 Year Olds		65-74 Year Olds		75-84 Year Olds		>84 Year Olds	
	(a)	(b)	(a)	(b)	(a)	(b)	(a)	(b)
Unemployment rate (%)	-0.00208 (0.00200)	-0.00187 (0.00177)	-0.00422*** (0.00134)	-0.00399*** (0.00124)	-0.00326*** (0.00118)	-0.00303** (0.00113)	-0.00479*** (0.00114)	-0.00437*** (0.00113)
PM10		-0.00396 (0.00382)		-0.00286 (0.00263)		-0.00180 (0.00244)		0.00173 (0.00231)
CO		0.0127 (0.00816)		0.00999* (0.00566)		0.00865* (0.00477)		0.00674 (0.00426)
O ₃		-0.00325 (0.00352)		-0.00122 (0.00229)		-0.00102 (0.00243)		-0.00109 (0.00217)

Note: *** p<0.01, ** p<0.05, * p<0.1. Standard errors clustered at the state are in parentheses (n=1,160). Dependent variable is the ambient pollution measure (PM10 or CO), standardized (mean zero, standard deviation one). State- and year-fixed effects are included but not reported. Even-numbered columns also include controls for the share of state residents who are female, black, other nonwhite, seven age groups (<1, 1-19, 45-54, 55-64, 65-75, 75-84 and ≥85 years

old), precipitation, temperature bins, Gini coefficient, the political measure, and the urbanization rate. Regressions are weighted by the state population within each age group.

Appendix Table B5: Econometric Estimates of the Determinants of Mortality from Specific Diseases at State Level

Regressor	Respiratory		Cardiovascular		Heart Attack	
	(a)	(b)	(a)	(b)	(a)	(b)
State unemployment rate (%)	-0.00528 (0.00388)	-0.00380 (0.00366)	-0.00627*** (0.00210)	-0.00655*** (0.00218)	-0.0177*** (0.00519)	-0.0180*** (0.00474)
PM10		0.00330 (0.00942)		-0.00749* (0.00373)		-0.0104 (0.00998)
CO		0.0262* (0.0146)		0.00916 (0.00797)		0.0173 (0.0205)
O ₃		-0.0104 (0.00694)		-0.000599 (0.00327)		-0.0141* (0.00791)

Regressor	Ischemic Heart Disease		Stroke		Cancer	
	(a)	(b)	(a)	(b)	(a)	(b)
State unemployment rate (%)	-0.0143** (0.00682)	-0.0148** (0.00736)	-0.0106*** (0.00315)	-0.01000*** (0.00293)	-0.000281 (0.00107)	-2.01e-05 (0.00101)
PM10		-0.0199 (0.0158)		-0.00449 (0.00523)		-0.000302 (0.00206)
CO		0.0334 (0.0272)		0.0224* (0.0114)		0.00588 (0.00486)
O ₃		-0.0209 (0.0134)		-0.00337 (0.00544)		7.80e-05 (0.00208)

Note: *** p<0.01, ** p<0.05, * p<0.1. Standard errors clustered at the state are in parentheses (n=1,160). Dependent variable is the ambient pollution measure (PM10 or CO), standardized (mean zero, standard deviation one). State- and year-fixed effects are included but not reported. Even-numbered columns also include controls for the share of state residents who are female, black, other nonwhite, seven age groups (<1, 1-19, 45-54, 55-64, 65-75, 75-84 and ≥85 years old), precipitation, temperature bin, Gini coefficient, the political measure, and the urbanization rate. Regressions are weighted by the state population.

Appendix Table B6: Econometric Estimates of the Determinants of External Causes of Death at State Level

Regressor	Vehicle Accident		Non-Vehicle Accident	
	(a)	(b)	(a)	(b)
State unemployment rate (%)	-0.0281*** (0.00355)	-0.0274*** (0.00356)	0.00340 (0.00624)	0.00787 (0.00566)
PM10		0.0117 (0.00847)		0.0303*** (0.0110)
CO		-0.00629 (0.0121)		0.0260 (0.0174)
O ₃		-0.00371 (0.0114)		0.0168 (0.0150)

Regressor	Suicide		Homicide	
	(a)	(b)	(a)	(b)
State unemployment rate (%)	0.0153*** (0.00520)	0.0155*** (0.00485)	0.00665 (0.0119)	0.00793 (0.0110)
PM10		0.00398 (0.00744)		0.000744 (0.0211)
CO		-0.00591 (0.0129)		0.0266 (0.0315)
O ₃		0.0109 (0.00710)		-0.00806 (0.0161)

Note: *** p<0.01, ** p<0.05, * p<0.1. Standard errors clustered at the state are in parentheses (n=1,160). Dependent variable is the ambient pollution measure (PM10 or CO), standardized (mean zero, standard deviation one). State- and year-fixed effects are included but not reported. Even-numbered columns also include controls for the share of state residents who are female, black, other nonwhite, seven age groups (<1, 1-19, 45-54, 55-64, 65-75, 75-84 and ≥85 years old), precipitation, temperature bins, Gini coefficient, the political measure, and the urbanization rate. Regressions are weighted by the state population.

Appendix C: Estimated Pollution Effects from Our Analysis and Previous Research (For Online Publication)

Table 9 combined micro-level estimates of the effects of pollution on mortality rates, from other studies, with our estimates of the relationship between pollution and the business cycle to predict how a one-percentage-point increase in unemployment would affect the mortality rate. We then compared these results to those obtained entirely based on estimates using our analysis sample and procedures. The methods for doing so are described here.

We draw on six previous studies. Currie and Neidell (2005) examine the effect of PM₁₀, CO, and O₃ on infant mortality rates in California. In their preferred specification, a one part per million (ppm) reduction in CO concentration correlates with an 18.125 per 100,000 live births decrease in infant deaths.⁶⁷ Chay and Greenstone (2003) estimate that a 1 unit ($\mu\text{g}/\text{m}^3$) reduction of total suspended particulates (TSPs) is associated with 4-7 fewer infant deaths per 100,000 live births.⁶⁸ In OLS regressions, Knittel et. al. (2011) find significant negative effects of CO concentrations on infant mortality, but after instrumenting for pollution using traffic and weather data, they instead obtain significant effects for PM₁₀, where a one unit ($\mu\text{g}/\text{m}^3$) reduction is associated with 18 fewer deaths per 100,000 live births. Mustafic et. al.'s (2012) metaanalysis indicates that a 1 mg/m^3 increase in CO concentration increases the relative risk of heart attacks to 1.048 (a 4.8% increase), and a 10 $\mu\text{g}/\text{m}^3$ increase in PM₁₀ concentration increases the relative risk to 1.006. Clancy et. al. (2002) find that a 35.6 $\mu\text{g}/\text{m}^3$ decrease in PM₁₀ concentration decreases respiratory deaths by 15.5% and cardiovascular deaths by 10.3%.⁶⁹ Wellenius et. al.

⁶⁷ Like us, they find that only CO is significantly correlated with mortality. In a closely related study of New Jersey, Currie et al. (2009) estimate that the same CO reduction would eliminate 17.6 infant deaths per 100,000 live births.

⁶⁸ To compare our results for PM₁₀ to the results for TSP (an older designation of particulates that includes more pollutants), we use rule-of-thumb EPA guidelines for comparing different types of particulates, cited in Dockery and Pope (1994), suggesting that one unit of TSP is equivalent to 0.55 units of PM₁₀.

⁶⁹ Clancy et. al. (2002) actually study a pollutant called "black smoke," or "British smoke." The EPA finds that black smoke is equivalent to PM₁₀ (Dockery and Pope 1994).

(2012) estimate that the odds ratio of stroke onset is 1.11 per $6.4 \mu\text{g}/\text{m}^3$ increase in PM2.5 concentration.⁷⁰

Table C1 provides details on the calculations summarized in Table 9. For greater clarity, we carefully describe the methods and findings in column 1 of that table, which uses results from Currie and Neidell's (2005) analysis of the effects of CO exposure on infant mortality in California. The first row presents our estimate of the cyclicity of pollution at the state level, where a one-percentage-point increase in unemployment predicts a 0.0297 ppm reduction in CO. This unemployment rate coefficient differs from that in Table B2 because the units of CO are ppm, so as to be comparable with Currie and Neidell (2005). The second row provides our estimate of the cyclicity of mortality – the unemployment coefficient from a model where infant mortality is the outcome. We estimate that a one percentage point increase in unemployment is correlated with 9.69 fewer infant deaths per 100,000 live births. This differs from the corresponding estimate in Table B4 because the log (rather than level) of mortality rates was used there.

The third row displays Currie and Neidell's previously described estimate that a one ppm increase in CO causes 18.125 additional deaths per 100,000 live births. The fourth row, "Δ in Cyclical Deaths Explained" is the product of the first and third rows (-0.0297×18.125), and indicates how the pollution reduction induced by a one percentage point increase in the unemployment rate is expected to decrease infant mortality, based on Currie and Neidell's estimate of how CO is related to the infant death rate. The resulting expected reduction of 0.538 deaths per 100,000 live births is then divided by the estimated total reduction of 9.69 deaths per

⁷⁰ The EPA's guidelines for comparing PM2.5 to PM10 suggest that one unit of PM2.5 is equivalent to 1.67 units of PM10 (Dockery and Pope 1994). Wellenius et. al. (2012) reports the effect of a $6.4 \mu\text{g}/\text{m}^3$ change in PM2.5 because that is the interquartile range of pollution exposure in their study. We convert this to an impact of a $1 \mu\text{g}/\text{m}^3$ change by simply dividing the effect by 6.4.

100,000 live births from a one point increase in unemployment (shown in row 2), to imply that the share of the procyclicality of infant deaths due to the cyclicity of pollution is 5.56% ($-0.538/-9.69$). This is shown in the fifth row and labeled “Pollution Share of Cyclical Deaths”.

The sixth through eighth rows of Table C1 present corresponding results based purely on the estimates developed in this analysis. Row 6 shows our prediction that a one unit increase in pollution (in the same units as the comparison paper) will increase infant mortality by almost twice as much as was found by Currie and Neidell (30.3 vs. 18.1 deaths per thousand live births).⁷¹ The seventh and eighth rows repeat the calculations in rows (4) and (5), except using our result for how pollution affects mortality. Thus, the “ Δ in Cyclical Deaths Explained” is -0.900 (-0.0297×30.3) and the “Pollution Share of Cyclical Deaths” is 9.29% ($-0.900/-9.69$).

The remaining columns of Table 9 show results using other research on the link between pollution and health. Using Chay and Greenstone's (2003) results, PM10 pollution accounted for 8.46% of the procyclicality of infant mortality. The point estimate based on our analysis is about 39% larger, although not statistically significant. Knittel et. al.'s (2011) OLS regressions find CO effects comparable to those in Currie and Neidell (2005). However, their IV regressions instead show a PM10 effect that is an order of magnitude greater than our estimates or those of Chay and Greenstone (2003). Using this result, the predicted contribution of pollution-induced mortality cyclicity is larger than the total change in deaths (see column 4). If correct, this finding implies that other cyclical changes, besides that of PM10, would make the infant mortality rate countercyclical.

Columns 5 through 9 compare our results with those from medical studies, where mortality effects are reported as relative risks or odds ratios, which we describe as percentage

⁷¹ Currie and Neidell (2005), and the papers in columns 2 through 4, consider death rates per 100,000 live births; we evaluate death rates per 100,000 <1 year olds. Here we assume that these death rates are equivalent.

changes (i.e. a relative risk of 1.05 equals a 5% increase). In column 5, Mustafic et. al. (2012) report that a one-unit increase in CO raises heart attack incidence by 5.5%.⁷² Our estimate (for heart attack deaths) is 6.42%. When combining our estimate of the procyclicality of CO with Mustafic et. al.'s (2012) estimate of heart attack incidence, pollution accounts for 8.19% of the overall procyclicality of heart attack mortality. Using just our estimates, 9.58% of the procyclicality is accounted for. Mustafic et. al. (2012) also report results for PM10 on heart attacks (column 6) which, combined with our estimates of the effects of the economic conditions on PM10 levels, indicates that the cyclicity of PM10 accounts for 2.47% of the change in deaths from heart attacks. Clancy et. al. (2002) find significantly positive effects of PM10 on both respiratory and cardiovascular deaths. According to our calculations, these account for 110% and 36.3% of the procyclical variations in mortality from these causes. Conversely, our analysis fails to uncover a significantly positive effect of PM10 on deaths from either cause at the state level, so we report zero effects. We do estimate that changes in PM10 are responsible for around 14% of the procyclical variation in respiratory mortality, one-tenth as large as that predicted using Clancy et al.'s 2002 estimates. Finally, Wellenius et. al. (2012) estimate a significant effect of PM2.5 on stroke incidence, which appears to explain around 7% of the procyclicality of stroke mortality.⁷³ Once again, we do not find any relationship between PM10 (our closest equivalent to PM2.5) and deaths from strokes, so that none of the macroeconomic variation in stroke mortality is explained.

⁷² Mustafic et. al. (2012) reports relative risk on heart attack *incidence* (not *mortality*) for a 1 mg/m³ increase in CO concentrations; we adjust to the standard units of CO with the conversion factor 1 mg/m³ = 0.873 ppm.

⁷³ Wellenius et. al. (2012) also report odds ratios for stroke incidence rather than mortality.

Table C1: Estimated Pollution Effects Using Results from Previous Research

	(1)	(2)	(3)	(4)	(5)	(6)	(7)	(8)	(9)
Study	Currie & Neidell (2005)	Chay & Greenstone (2003)	Knittel et al. (2011)	Knittel et al. (2011)	Mustafic et.al. (2012)	Mustafic et.al. (2012)	Clancy et al. (2002)	Clancy et al. (2002)	Wellenius et al. (2012)
Pollutant	CO	TSP/PM10 ⁶	CO	PM10	CO	PM10	PM10	PM10	PM2.5/PM10 ⁷
Outcome	Infant mortality	Infant mortality	Infant mortality	Infant mortality	Heart Attacks	Heart Attacks	Respiratory Deaths	Cardiovascular Deaths	Stroke
<u>Estimate of Cyclicity of Pollution and Mortality, Based on Current Analysis</u>									
Cyclicity of Pollution ¹	-0.0297	-0.820	-0.0297	-0.820	-0.0297	-0.820	-0.820	-0.820	-0.820
Cyclicity of Mortality ²	-9.69	-9.69	-9.69	-9.69	-0.0199	-0.0199	-0.00331	-0.00664	-0.0124
<u>Estimate of Pollution as Mechanism for Cyclical Variation in Mortality, Based on Previous Research</u>									
Pollution on Mortality ³	18.1	1.00	17.1	18.0	0.0550	0.000600	0.00443	0.00294	0.00103
Δ in Cyclical Deaths Explained ⁴	-0.538	-0.820	-0.508	-14.8	-0.00163	-0.000492	-0.00363	-0.00241	-0.000845
<i>Pollution Share of Cyclical deaths</i> ⁵	5.56%	8.46%	5.24%	153%	8.19%	2.47%	110%	36.3%	6.81%
<u>Estimate of Pollution as Mechanism for Cyclical Variation in Mortality, Based on Current Analysis</u>									
Pollution on Mortality ¹	30.3	1.39	30.3	1.39	0.0642	0	0.000342	0	0
Δ in Cyclical Deaths Explained ⁴	-0.900	-1.14	-0.900	-1.14	-0.00191	0	-0.000280	0	0
<i>Pollution Share of Cyclical deaths</i> ⁵	9.29%	11.8%	9.29%	11.8%	9.58%	0%	8.47%	0%	0%

¹ Unemployment rate coefficient from regression where dependent variable is pollution concentration (not normalized).

² Unemployment rate coefficient from regression where dependent variable is mortality rate (in deaths per 100,000) in columns 1 through 4 and log mortality rate in columns 5 through 9).

³ Units are deaths per 100,000 live births (change in death rate), in response to a one-unit change in pollution, in columns 1 through 4 (5 through 9). CO units are parts per million (ppm); PM10 units are $\mu\text{g}/\text{m}^3$.

⁴ Calculated as the product of “Cyclical Pollution” and “Pollution on Mortality”.

⁵ Calculated as “ Δ in Cyclical Deaths Explained” divided by “Cyclical Pollution”.

⁶ Chay and Greenstone study TSP. We compare to our results from PM10, using the EPA guidelines for comparing the two pollutants (Dockery and Pope 1994).

⁷ Wellenius et. al. study PM2.5. We compare to our results from PM10, using the EPA guidelines for comparing the two pollutants (Dockery and Pope 1994).