

AMERICAN BANKING AND THE TRANSPORTATION REVOLUTION BEFORE THE
CIVIL WAR

Jeremy Atack

Vanderbilt University & NBER

Matthew S. Jaremski

Colgate University & NBER

Peter L. Rousseau

Vanderbilt University & NBER

Abstract

Studies have shown a connection between finance and growth, but most do not consider how financial and real factors interact to put a virtuous cycle of economic development into motion. As the main transportation advance of the 19th century, railroads connected established commercial centers and made the unsettled areas along their routes better candidates for development. We measure the strength of links between railroads and banks in seven Midwest states using an annual transportation GIS database linked to a census of banking. These data indicate that those counties that already had a bank were more likely to see their first railroad go through over the next decade, while new banks tended to enter a county a year or two after it got a railroad. The initial banking system thus helped establish the rail system, while the rapid expansion of railroads helped fill in the banking map of the American Midwest.

JEL: N11; N21; N71; N91

AMERICAN BANKING AND THE TRANSPORTATION REVOLUTION BEFORE THE CIVIL WAR*

1. Introduction

The study of financial factors in economic growth and development is an area of increasing interest, and a well-developed literature indicates that finance plays a first-order and enduring role (Levine 1997, Levine 2005). And though economic historians are typically more circumspect in attributing too much to financial factors, a growing body of evidence suggests that improvements in finance served to transform the U.S. economy from a state of disarray, confusion and stagnation in the 1780s into a more modern and growing economy in subsequent decades (Rousseau and Sylla 2005). Similar experiences in the England, the Netherlands, and Japan add weight to these arguments.

Nevertheless, to infer from this evidence that finance was an exogenous driver of growth is as simple as it is incorrect, and begs the question of what put these virtuous cycles of finance and development into motion. In the United States, it took rising state debts, the risk of potential defaults, and the inefficiencies of multiple currency systems to bring about a sea change in financial policy under Treasury Secretary Alexander Hamilton. But beneath these issues, the new financial structures arose in response to the nation's seemingly unlimited potential for generating real economic returns.

A half-century after the Federal Constitution, with the nation's sovereignty secure and its financial institutions already at work in the Eastern population centers, a network of banks formed rapidly in the Midwest. The network effectively filled in gaps in the geographic distribution of financial services as Midwestern customers no longer needed to travel to the region's largest city to bank. But what caused the expansion? Rockoff (1974) and Rolnick and

Weber (1984) argue that lowered barriers to entry from the free banking movement were central. These undoubtedly contributed to the expansion, yet the *locations* of new banks after 1840 seem far from random. We argue that the burgeoning rail system provided the real-sector catalyst that directed and accelerated the expansion of banking into specific locations of the Midwest. While we do not mean to suggest that banking networks would not have eventually formed without the rails, we argue that the banking map and the implied distribution of capital would have looked quite different without the railroad.

Although their indispensability has been questioned and found wanting (Fogel 1964), railroads were the key transportation development of the 19th century and, from the very first, linked established markets. And though banks and financial services were already available in these markets, unsettled areas along the new rail routes immediately became more attractive prospects for development, and this was increasingly so as railroads pushed further westward towards the frontier. More nimble and dense than canals, railroads opened trading networks between the frontier and major population centers. Indeed, this is central to recent work by Donaldson and Hornbeck (2012). Here, we ask a more specific question: Did the economic potential created by the rails determine where banks would set up shop to finance a wave of new economic activity? We believe the answer is yes. It is clear that isolated banks without some form of organized and improved transportation could do little to influence the course of trade. However, the interaction between the two over the period from 1836 to 1861 turns out to be crucial.

Because of the availability of complementary databases, we focus upon the antebellum Midwest. Specifically we look at the expansion of railroads and banks in seven Midwestern states: Illinois, Indiana, Iowa, Michigan, Missouri, Ohio and Wisconsin, which achieved

statehood between 1803 (Ohio) and 1848 (Wisconsin). For each state, we have detailed annual information about the spread of the transportation network and the location of each bank that opened (or closed) prior to 1862. Our emphasis upon the railroad rather than on agriculture or manufacturing as the driving force behind bank location reflects the tremendous potential for trade and development that these railroads enabled. Atack and Margo (2011) and Atack et al. (2010) relate the coming of the railroad to increases in agricultural productivity, market specialization, land values, urbanization, and manufacturing factories. Was this then what lay behind the spread of financial intermediaries? And did these intermediaries finance the local improvements that made communities along the path of the railroad successful? We cannot answer these questions directly since finance would have continued to develop without railroads, but rather we address it indirectly by testing whether banks entered quickly after their county receiving a railroad rather than later after growth had already occurred.

The data tell a two-part story. First, railroads were laid out to link existing centers of finance and commerce. Early charter banks tended to have high capital stocks and were concentrated in large population centers. Seeing the opportunity to expand and diversify their local economy, early bank owners often helped fund the first rails. For instance, the Baltimore and Ohio Railroad was not only initially recommended by a group headed by the president of the Mechanics Bank of Baltimore, but its stock was also issued by that bank as well as the Farmers' Branch Bank in Frederick and the Hagerstown Bank in Hagerstown (Stover 1987). Even when they did not directly fund the rails, existing banks provided information and facilitated transactions for the railroad companies. The existing banking system, therefore, influenced the anchors of the railroad network.

Second, once the rails were laid, additional banks sprang up along the tracks. While the railroad's main terminals were often located in financial centers, the connecting lines ran through many previously undeveloped areas in between. Indeed, most new banks during the period entered just a year or two after the railroad came through their county and, in some cases, freshly chartered railroad companies also took out banking charters to help raise capital. For example, in 1834 promoters Sherman Stevens and Alfred Williams secured a bank charter from the Michigan Territory to build the Detroit and Pontiac Railroad Company to connect Detroit to the rich agricultural land of Oakland County to the northwest of the city. Finding adequate finance for that venture, however, proved difficult so these same promoters persuaded the territorial legislature to charter the Bank of Pontiac the following year (Burton, Burton, Blue and Miller 1930). That same year, the promoters of the Erie and Kalamazoo Railroad also secured a banking charter for a bank in Adrian, Michigan, which would be the western terminus of the railroad (Anonymous 1882, p. 918). It is in this sense that the rapid development of rails during the antebellum period may be responsible for filling out the banking map more rapidly than would have otherwise occurred.

2. Antebellum Banks and Transportation

The early American banking system was the product of state-level legislative activities that created a loose collection of rules with inconsistent standards across time and jurisdictions. Before 1837, approval of any bank's charter depended as much on political influence as on

financial resources.¹ The slow entry of banks led to an intense desire for liquidity in developing areas and demands for change.

Midwest state legislatures responded to these pressures by passing a series of measures now known as “Free Banking Laws.” Starting with Michigan in 1837 and continuing through Iowa in 1858, these laws replaced individual legislative charters for banks with a well-defined set of capital, reserve, and note issue requirements but otherwise free entry. While specific requirements varied across states, most laws allowed speedy entry with relatively small startup costs, and every Midwest state except Missouri installed some version of free banking.² Thus, relative to early charter banks, which often experienced delays in the entry process and were forced to dissipate potential rents to acquire or protect their charters, free banks could obtain charters quickly and therefore respond more quickly to economic opportunities. Regardless of charter type, however, antebellum banks generated most of their earnings from the interest charged on loans and would leverage their profits by attracting deposits. We should therefore

¹ Hammond (1957, p. 574) writes that “It had long been difficult to get new bank charters in New York because the [Albany] Regency kept the number down conservatively.” (The Albany Regency was a group of politicians that held considerable power in New York state during the 1820’s and 1830’s and are closely associated with the Jackson Democrats and Martin Van Buren.) According to Utley (1884), “The consequence was a scarcity of money...not enough to supply the necessary demands of business. The people were clamorous for relief.”

² Rolnick and Weber (1983) date the passage of free banking laws as: Michigan 1837 (repealed 1839) and 1857; Illinois 1851; Ohio 1851; Indiana 1852; Wisconsin 1852; and Iowa 1858.

expect banks to form in areas with large potential demands for deposits and loans as well as those areas that could sustain a high interest rate.

Due to high travel costs, individuals and businesses were for the most part forced to bank locally.³ This likely made population density the most important determinant for bank entry because high population density areas provided a concentrated pool of depositors and loan applicants. Moreover, because borrowers could generally not borrow from distant banks where they were unknown, there was little possibility of direct interest rate arbitrage, so banks could charge high rates.

Areas connected to a transportation network would also have been attractive to banks.⁴ Transportation networks concentrated people and economic activity into specific areas. Atack, Bateman, Haines, and Margo (2010) find that the arrival of a railroad increased the fraction of people living in an urban area in the Midwest by more than 50%.⁵ At the same time, manufacturing factories, with their need for physical and working capital, also located around railroads and waterways to take advantage of lower shipping costs (Atack, Haines and Margo

³ The nation's road network was primitive (Baum-Snow (2007) and Rajan (2008)).

⁴ Proximity to a transportation network could also be less attractive for a bank due to better opportunities for arbitrage and competition. Yet the evidence suggests that most banking was local and transportation options represented a positive benefit for banks overall.

⁵ However, since urbanization in the region was generally low, this 50%+ increase amounts to only 3-4 percentage points.

2011). A location with a railroad could thus be attractive to potential bankers regardless of its current population.

On the other hand, locations with incumbent banks would generally have been less attractive for new banks. Sylla (1969), James (1976), and Sullivan (2007) show that increased bank competition during the late 1800s was necessary to lower interest rates on loans. By entering a developing area first, a bank could keep loan rates high and deposit rates low. This incentivized banks to enter an area early in the development process and before other banks arrived. For example, an individual might preemptively open a bank in an area that would soon get a railroad, trading off low initial profits for high future profits.⁶

While banks were attracted to urban areas, we focus on their attraction to rails and other transportation for a variety of reasons. First, the arrival of a railroad was often the underlying cause of a rapid growth in urbanization. If we were to focus solely on population in this case, we could confuse accelerations in population growth with the arrival of a railroad. Second, while early railroads were likely constructed to connect *existing* financial and commercial centers, transportation was arguably *exogenous* to the entry of *new* banks. Ports and rivers were largely predetermined by nature, whereas the routes of railroads, while not entirely unconstrained by geography, were planned in advance and represented a product of choice whose construction

⁶ Not every bank would locate in a developing or developed area, however, since such areas were vulnerable to sudden bank note redemptions and deposit withdrawals. Therefore, banks seeking to avoid redemptions might locate away from transportation lines and cities. But Rolnick and Weber (1983, 1984) and Atack and Jaremski (2012) show that these so-called “wildcat” banks were far more the exception than the rule.

took time.⁷ Therefore, the decision to build a railroad between two cities was made using initial information, and the timing of the rail's arrival was a function of the distance and topography between it and the railroad's starting point.

Figure 1 illustrates the high correlation between banks and railroads. In both 1850 and 1860, most railroads started or ended at a bank location, and the majority of banks were located somewhere along a railroad. The critical question, however, is when did those banks and railroads enter relative to each other. This timing will help sort out the determinants of both banks and rails. Before testing the relative timing of bank and railroad entry, we describe the data that we have on each and examine their growth individually. We then illustrate how the two co-evolved.

3. A First Look at the Data

3.1. Sources and Methods

Although previous studies (Callender 1902) have suggested a connection between banks and transportation, we are able to examine the timing of the two events by assembling a comprehensive database containing annual information on every Midwest bank and the extent of

⁷ Over time some rivers were dredged and ports constructed, but even then the original location of the river or body of water was predetermined and could only be changed so much. Atack et al. (2010) use county location along a simple vector connecting the starting and ending points of early (mostly pre-rail) federal government surveys of transportation routes as an instrumental variable to predict whether or not a county would gain a railroad.

the transportation network prior to the Civil War. These, in turn, are linked to economic and demographic data from the decennial censuses for 1840, 1850 and 1860.

The transportation data come from GIS databases developed by Atack from a variety of contemporary and retrospective sources including digitized maps, reports by various government agencies, compilations from travel guides, and the like (Atack 2013). In particular, the basic Midwest rail data are from Paxson (1914), who used contemporary travel guides for Ohio, Indiana, Illinois, Michigan and Wisconsin and news accounts from Poor's *American Railroad Journal* (1832) to draw a series of maps detailing the spreading rail network in the Old Northwest between 1848 and 1860.⁸ These data are supplemented with digitized maps for Iowa and Wisconsin from the David Rumsey map collection and extended to 1861 using maps created by Taylor and Neu (1956). The exact location of the individual rail lines was determined so far as possible using a number of different strategies: where rail lines run today, where satellite imagery shows where ground was disturbed and from topographical maps that show old cuts and fill and often bear notations such as "old railroad grade" in the general vicinity of where a rail line was reported to be located according to Paxson.

Data on canals are from Goodrich (1961) supplemented by 19th century sources such as Poor (1970) and various histories of the individual canal systems that provide dates on when specific sections of canals were opened to traffic (e.g., Whitford (1906)). Data on steam navigation on the western rivers are from Hunter (1949) and various U.S. government reports,

⁸ The travel guides first appeared in the 1840s and include *Disturnell's Guide* (1847), *Doggett's Gazetteer* (1848), *Appletons' Guide* (1847), *Dinsmore's Guide* (1853), and *Lloyd's Guide* (1857).

especially those by the War Department, which was responsible for the Corp of Engineers. These sources provide dating for steam navigation on specific stretches of the Ohio and Mississippi river system and their tributaries which drain the region.

We use this GIS database to construct a county-level panel from 1836 to 1861 with variables such as the number of miles of railway in a county and indicators for whether the county had a port, river, or canal within its boundaries. We then link these transportation measures to county-level census data assembled by Haines (2010), which updates the original ICPSR database (1979).⁹

The county, then, is the basic unit of observation in our analysis. However, as everyone who has ever worked with these data for 19th century America knows, many county boundaries changed from decade to decade, especially closer to the frontier of settlement where the creation of local governments was an on-going process. While the GIS bank and rail data can be corrected for this, one simply cannot link the Census data by county across time because of these boundary changes. One approach therefore is to restrict the analysis to just those counties which had constant boundaries during the time period using sources such as Thorndale and Dollarhide (1987) and ICPSR (1979) estimates of the area of each county. This procedure, however, leaves out large swathes of the region, much of it on the northern and western edges but also large areas of central Illinois, and northwestern, central and southeastern Ohio as well as the northern two-thirds of Michigan.

⁹ These sources allow us to measure water access at the turn of the century rather than changes over time. Thereafter, however, there were few additions to ports anywhere in the country.

Instead, we adopt a different, GIS-based procedure with the goal of identifying specific geographic areas for which we can also obtain consistent economic and demographic information.¹⁰ In 1840, the seven Midwestern states that we consider were divided into 388 “counties,” some of which were unattached (that is to say were not formally a part of any county) and some of which extended well beyond the region’s western and northern boundaries. We began by eliminating those western and northern areas in Iowa and Wisconsin whose boundaries extended beyond those of the modern state. We also had to “trim back” some counties in Iowa and Wisconsin until we could locate a determinate western and northern boundary within these states for our analysis. That resulting area, shown by the outline in Figure 2, embraced 351 counties in 1840 and 503 counties by 1860, of which 220 were identical according to GIS (meaning that they shared the same geographic space and had identical geometries) in 1840, 1850 and 1860.

The area covered by the remaining, non-GIS identical counties (embracing what were 131 counties in 1840 and which became 283 counties in 1860) can, however, be combined at the county level within a state (since the states involved had definitive, fixed borders) into identical contiguous areas comprised of complete individual counties in each year. Since these “aggregated counties” represent a constant geographic area for which consistent economic and demographic data can be assembled from the censuses, they too can be a part of our panel.¹¹ These are shown in Figure 2 and are bounded by the heavier outline. Within each, the lighter

¹⁰ Note that counties with constant borders from 1840-60 are a subset of this larger panel.

¹¹ The regression results we report in Section 4 using this aggregation technique do not differ significantly from those that include only counties with constant borders.

lines show the 1840 and 1860 county boundaries of the counties that are aggregated into these “super-counties.”

We link these “county”-level (identical counties plus the aggregated “super counties”) data on transportation to Warren Weber’s (2005) enumeration of antebellum banks, which provides information on locations and dates of operation until 1860. We have extended Weber’s bank census to the outbreak of the Civil War using annual editions of the *Merchants and Bankers’ Almanac* (Anonymous s.d.) which provide a comprehensive list of U.S. banks in each year.¹² We also make a few adjustments to Weber’s data based upon these directory listings and other contemporaneous information. In particular, the changes involved merging banks that “closed” in one year with those that “opened” almost immediately after with the same name. We believe that these reflect charter renewals or mergers so that the “new” bank was not necessarily an entering bank. However, while these few changes affect the timing of the second or third bank in a county, they do not change the date at which a county gained its first bank.

3.2. *Timing of Bank Entry*

Figure 3 shows three primary waves of Midwest bank entry. The first took place between 1833 and 1839. Of the 103 banks that started up during this period, three-fourths were in Michigan and Ohio and the rest in Indiana. This wave was quickly ended by Panics of 1837 and 1839, which closed a large number of Michigan free banks and discouraged further bank creation.¹³ It was not until the panics subsided and many states had defaulted on their debts that a

¹² The few “Branch” banks in the Midwest are treated as separate banks.

¹³ For example, only 11 banks were created in the entire Midwest between 1840 and 1844.

second wave of bank entry occurred from 1845 to 1848. Once again, 49 of the wave's 51 new banks started in Michigan and Ohio, suggesting that the wave was particular to conditions in these states. The third wave of bank entry began around 1850 and lasted through the start of the Civil War. Unlike the previous ones, this wave spread banks through the remaining Midwest states, with banks entering Indiana and Illinois during the early 1850s, Wisconsin during the mid-1850s, and Iowa or Missouri during the late 1850s.

The few years with abnormally high entry rates correspond with aggregate price fluctuations or changes in bank regulatory regimes, especially those affecting bank capital. For instance, more than 100 banks entered during 1852 and 1853 after the passage of free banking laws in Indiana and Illinois. Further, the large number of banks entering Illinois and Wisconsin during 1858 and 1859 seem to have been the result of free banks taking advantage of declines in the prices of southern bonds used to back their note circulations (Economopoulos 1988, Dwyer and Hasan 2007).

The composition of banks also changed over time. In the earliest period, many Midwest banks were state-funded. For example, the State Bank of Indiana system was started in the 1830s and grew to over 20 branches and the State Bank of Ohio system was started in the 1840s and grew to over 40 branches.¹⁴ These banks were particularly large and concentrated in large cities. The few other banks tended to be politically connected and often chartered to help float the states' internal improvement bonds. Over time, and often with the advent of free banking, entering banks were able to avoid political entanglements. The resulting banks were generally

¹⁴ It is important to note that these branches were independent of the main office and thus had the ability to pursue their own investment choices.

smaller and located in rural areas. Therefore, while early banks might have been able to fund railroads, later banks would not have been able to contribute to their growth.

3.3. Timing of Canal and Railroad Entry

According to Segal (1961), there were three waves of canal construction, each beginning in a spirit of hope and optimism and ending in collapse and panic. The first was concentrated in New York and Pennsylvania and sparked by the optimism generated by the immediate and resounding success of the Erie Canal. This phase ended with the realization that the topography of Pennsylvania would prevent that state's ambitious canal system from duplicating the Erie's success.¹⁵ The second canal construction phase saw canals expand into the Midwest, sparked by ambitious plans and generous support in Ohio to link the Ohio River and the Great Lakes together at multiple points along the breadth of the state. The second canal boom, however, collapsed when the Panic of 1837 disrupted the construction of the (overly ambitious) Wabash and Erie Canal and also railroad projects like the Detroit and Pontiac Railroad.¹⁶ The third canal phase saw much less ambitious plans for feeder canals to expand the market reach of the existing system and to bolster the technical viability of the trunk canals.

¹⁵ For example, the Pennsylvania Mainline route was interrupted by inclined planes and even a portage railroad where lockage was impractical (as between Hollidaysburg and Johnstown). These raised both construction and operating costs and became choke points in the system.

¹⁶ With construction slowed by lack of financing, this 460 mile canal—the longest canal ever built in North America—barely began service before rails pushed beyond it into new territory.

While Ohio was the first Midwestern state to invest in canals, it was not the first to adopt rail technology. Indeed, Ohio early on tried to discourage competition from rails in a failed effort to prevent the devaluation of its canals (and their revenue)—many of which had been built with public funds. Instead, the first rail service in the region started in Michigan even though it had not yet obtained statehood. The territorial legislature chartered the Pontiac and Detroit Railroad in 1830¹⁷ and the Erie and Kalamazoo Railroad in 1833 (Dunbar 1969, Meints 2005). Seeing Michigan's success, Ohio acquiesced and began railroad construction in 1835. By 1837, Ohio's Mad River and Lake Erie Railroad began operation from Sandusky (on Lake Erie) to Bellevue.

Despite early successes in Ohio and Michigan, other western rail construction did not take off for a decade and a half. For instance, there were still very few railroads in the other Midwest states even as late as 1848, and most were relatively short-routes that did not connect to the eastern rail system. The first ran from Indianapolis to the Ohio River at Madison, whereas the others were short Illinois lines (Springfield to the Illinois River at Beardstown, and Chicago to Elgin). The Midwestern states did not begin to construct an interconnected system of railroads until the 1850's, but once underway, expansion proceeded rapidly. Nationwide, approximately 22,000 miles of track were laid over the decade, and much of it was built in the Midwest.¹⁸ Rails

¹⁷ Not to be confused with the Detroit and Pontiac Railroad, which replaced it when the original promoters failed to make good on their promises (Burton, Burton, Blue and Miller 1930).

¹⁸ Indeed, between 1853 and 1856, more than half of the new track miles were built in the Midwest (Fishlow 1965, p. 172, Carter, Gartner, Haines, Olmstead, Sutch, Wright and Cain 2006).

eventually reached across the entire Midwest and connected to the eastern railroad system—Chicago, for example, had an all-rail link to the East Coast by 1858 (Cronon 1991, Grossman, Keating and Reiff 2004). However, not every county in the region received a railroad, and about 20% of Midwest counties still did not have a railroad as of 1860.

The tremendous acceleration of railroads during the 1850s does not seem to have been driven by financial factors. As seen in the previous section, the banking system was relatively slow to recover after the Panics of 1837 and 1839, and while the surviving large banks likely continued to fund railroads, the few entering banks were too small to fund such large scale railroad projects. Instead, the rise in the demand for grain is likely one of the main factors for bringing more investment into the system. This is best seen in the switch from small regional railroads to an interconnected network and the growth of feeder railroads running from North to South.

3.4. Matching Banks and Transportation

Transportation and banks likely have a symbiotic relationship. Just as banks did not open in undeveloped locations, investors did not construct railroads to nowhere. In this way, the existing Midwest banks might have helped define the terminal stations of the railroad system, whereas new banks might have taken advantage of locations in-between that had been newly opened to trade. In this section, we examine these relationships by asking three empirical questions: (1) Did railroads match up with existing financial centers? (2) Were new banks more likely to enter those areas connected to transportation networks? And, (3) when did banks enter relative to an area's first railroad?

To observe the influence of existing banks on rail growth, we separate counties based on whether or not they had at least one bank in 1836. Figure 4 graphs the fraction of counties in each group that had a railroad over time. Most of the early railroads were located in counties with banks and the trend continued in the 1840s and 1850s. Even by 1860, a rail was located in 100% of counties with a bank in 1836 but only in 70% of other counties. While we still must control for factors such as population density and economic activity, the raw data suggest that existing banks helped map out the rail network.

We measure the effect of all types of transportation on bank creation by examining the average distance between entering banks and the nearest railroad, canal, or river/port. The data show a distinct shift towards transportation (Table 1). A few early banks were located along rivers and ports, but most others were far from transportation, likely a result of a lack of options. However, those banks entering after 1840, when railroads and canals were more prevalent, located only 6.5 miles away from the nearest transportation network. Later bank entry seems to have corresponded more to railroads than canals. Even at the height of canal construction, nearly three times as many banks were established within 5 miles of a railroad than within 5 miles of a canal. This difference could be the result of the increased speed and more direct routes offered by railroads relative to canals, which greatly improved conditions for personal travel.

We observe the timing of bank entry relative to the entry of a county's first railroad in Figure 5. Few banks entered a county before it got a railroad, and over two-thirds entered afterward. Specifically, most banks entered a year or two after a railroad. For example, only 12 banks entered the year before a rail arrived, 26 entered the same year that the railroad arrived, and 38 entered the year after. Because the presence of a bank in a county might have delayed the entry of a second bank, counting the total number of bank entries could overstate the extent to

which banks followed the railroads. Yet even when we only count a county's first bank, the number that enter a year after a railroad (10 banks) still exceeds the number that entered the year before a railroad (5 banks) or at the same time as a railroad (7 banks).

The lower panel of Figure 5 illustrates what happens when we remove those counties with a port on one of the Great Lakes from the sample. Because ports and railroads were both valued for their ability to create trade, banks might be willing to enter counties with ports even if they did not have a railroad. Therefore, mixing counties with and without ports could positively bias the number of banks that entered before a railroad. As expected, when port counties are removed, the number of banks entering before a railroad decreases from 26 to 23 but those entering after railroad only decreases from 37 to 36. Banks thus seem to have been primarily attracted to the first transportation network entering a county, rather than railroads per se.

4. Econometric Analysis

The raw data suggest that railroads were built to link large commercial and financial centers, while new banks sprung up quickly once the rail was laid. Our descriptive analysis, however, is unable to control for other important factors. For instance, railroads might have been attracted to more densely populated areas rather than by the presence of banks, and the late arrival of banks in specific states might reflect the absence of a Free Banking Law. We therefore proceed with a multivariate regression approach.

Because our transportation and bank data are annual while the census data are decadal, we cannot simultaneously control for county-level characteristics and compare annual growth in banks and railroads. Consequently, we break up the analysis into two steps. We first examine whether other county characteristics reduce the correlations between banks and rails at the

county level with a decennial analysis for 1840-1860 that considers both the effect of the initial number of banks on railroad growth and at the effect of railroads on subsequent bank growth. Next, we examine the specific timing of bank entry relative to railroads and free banking laws by explaining annual changes in each variable. By isolating the number of banks that entered directly before or after a railroad, we are better able to determine whether the rail was the main determinant of entry.

4.1. Determinants of Rail Entry by Decade

Before examining the response of bank entry to the growing rail system, we test whether the presence of a bank encouraged railroad development. We examine the arrival of a railroad and growth in the number of railroad miles using an OLS regression where each observation is a county-decade.¹⁹ The dependent variable is the change in railroads in county i during the decade d , and the main explanatory variable is the number of banks present in the county at the start of

¹⁹ While we aggregate the data to reflect constant 1840 boundaries, we do not weight the aggregated observations for “super-counties” in the regressions. If we exclude aggregated counties from the sample, the p-values for the coefficients on many variables rise due to the smaller number of observations but the signs do not change and most remain statistically significant. When we weight the observations, the statistical significance of most variables rises. To express railroad miles in percentage changes, we add one mile of railroad to every county.

the decade.²⁰ As a county can only gain a railroad once, we drop counties that already had a railroad at the beginning of the decade $d-10$ and estimate the regression separately for the 1840s and the 1850s. The regression model is:

$$\Delta RAILS_{i,d} = \beta_1 Banks_{i,d-10} + \beta_2 PopDen_{i,d} + \beta X_{i,d} + S_s + e_{i,d}, \quad (1)$$

where $X_{i,d}$ is a vector of county-level control variables, S_s denotes fixed effects for states, and $e_{i,d}$ is the error term. The county-level controls include the logarithm of manufacturing capital per capita, the logarithm of farm capital per capita, population density, and dummy variables representing whether the county had a canal, a navigable river, or was on the Great Lakes.²¹ Because the presence of a bank has been related to increases in population, we estimate the regression model with and without population density on the right hand side.²²

²⁰ We also estimate regressions with the book values of bank assets, loans, and capital as separate measures of financial development, but because they yield results similar to those for the number of banks, we do not report them here.

²¹ Farm capital is the sum of farm value (i.e., land and structures), and the values of farm implements and livestock. We obtain similar results when using any variable in the sum. We log both farm and manufacturing capital as they seem to be log-normally distributed. When we do not apply the log transformation to capital, the effects of the other variables grow much larger.

²² See Bodenhorn and Cuberes (2010) and Jaremski and Rousseau (2013) for the response of urban population to banks.

The coefficient on the number of banks is generally positive and statistically significant in Table 2. For each bank in a county, the additional probability of receiving a rail was around 11% in either decade. The coefficient on number of banks loses statistical significance in the regression for the 1850s with the railroad entry indicator on the left hand side, but even so, the initial number of banks is always significant for the change in railroad miles. The results indicate that the initial banking system helped provide some structure to the growing railroad network.²³

4.2. Determinants of Bank Entry by Decade

We begin to analyze the banking system’s response to railroads using a similar structure to that in the previous section. Each observation is a county-decade, and the dependent variable is the number of banks that entered county i during the decade d . As before, we exclude observations for counties that had a railroad at the start of the decade, and estimate the equation separately for each decade.²⁴ Given that every county starts without a railroad, the approach is similar to a difference-in-difference model, and by controlling for contemporaneous county-level variables rather than initial values we tend to bias the effect of railroads downward. The specification is:

$$NewBanks_{i,d} = \beta_1 Rail_{i,d} + \beta_2 PopDen_{i,d} + \beta_3 FBYrs_{i,d} + \beta X_{i,d} + S_s + e_{i,d}, \quad (2)$$

²³ When we include new banks as well as initial banks on the right hand side, the coefficient on initial banks remains significant while the coefficient on new banks does not.

²⁴ We obtain more significant results when we do not drop out counties with a railroad or run the regression as a random-effects panel.

where $FBYrs_{i,d}$ is the number of years a free banking law was in place and the vector of control variables now also includes the number of years since state s passed a free banking law.²⁵ As before, we estimate the regression with and without population density.

The results in Table 3 show that the arrival of new rails encouraged bank entry. A county that received a new railroad in the 1840s was expected to have gained an extra 0.550 to 0.572 banks over the decade. Alternatively, a county that went from having no railroad to having 25 miles of track in the 1840s would have received 0.75 new banks by the end of the decade. These effects are particularly large relative to the average number of entering banks per county over the decade (0.91). While the coefficient on the railroad dummy is not statistically significant in the 1850s, the coefficient on railroad miles remains so. The fact that the railroad dummy is less significant than the number of railroad miles suggests that the location of a railroad was more important than just having one.

Table 3 also indicates that non-rail transportation was particularly important for bank growth during the 1840s but not as much during the 1850s. For instance, a county that had a navigable river was expected to gain about 0.26 more banks during the 1840s, but would have lost (an insignificant) 0.27 banks during the 1850s, whereas a county on the Great Lakes would have gained about 0.35 banks in the 1840s but would have lost 1.06 banks in the 1850s. The only transportation method that seems to hold up over time is canals, but even then, it is not significant when regressed alongside railroad miles in the 1850s. A county with a canal would be

²⁵ While Michigan passed its first free banking law in 1837, it was quickly abolished. We therefore examine only the years from Michigan's second free banking law in 1857.

expected to gain 0.49 new banks over the 1840s but an insignificant 0.40 banks over the 1850s. The results suggest that the rail system largely replaced existing transportation networks, and might have made use of some canals.

The other county characteristics are only statistically significant in the 1850s but are small relative to the impact of railroads. Agricultural development seems to have discouraged banks from entering a county, whereas manufacturing seems to have encouraged bank entry. For instance, a 10% rise in farm capital would lead to 0.144 fewer banks in a county during the 1850s, and a 10% rise in manufacturing capital would lead to 0.05 more banks. On the other hand, even a 10% rise in population density only would lead to at most an insignificant 0.057 more banks.²⁶ These results are consistent with most banks providing little agricultural or mortgage lending, and with being actively engaged in trade and commercial paper.²⁷

The contemporary literature suggests that some fraudulent banks avoided transportation networks. As these wildcat banks would generally reduce the effect of a railroad on bank entry, we re-estimate the regressions using a dependent variable that only counts the entry of banks that remained in operation for three or more years.²⁸ This restriction should eliminate those banks

²⁶ The lack of statistical significance for population density is likely due to manufacturing and farm capital entering the regressions in per capita terms, thereby also controlling for population.

²⁷ For instance, 72% of mortgage debt in the Midwest was provided by direct lenders rather than financial intermediaries (Snowden 1995). State-level banking regulations such as usury laws and the prevention of branching also discouraged banks from entering agricultural areas.

²⁸ The results are similar when using cutoffs of 1 or 2 years.

that intended to defraud their customers or that did not take steps to properly diversify their asset portfolios. Seen in Table 4, the railroad coefficients become more statistically significant and increase relative to the average number of entering stable banks (0.57). A county that gained 25 miles of railroad would be expected to gain a statistically insignificant 0.6 stable banks in the 1840s and 0.225 stable banks in the 1850s. Stable banks thus seem to have been attracted to areas with railroads.²⁹

We also report separate regressions for free and charter bank entry in Table 4 to account for their different chartering procedures.³⁰ The number of railroad miles is correlated with both free and charter banks. A county that went from having no railroad to having 25 miles of railroad would be expected to gain 0.18 charter banks and 0.30 free banks by the end of the decade. Relative to the mean number of new charter banks (0.262) and of new free banks (0.653), the results are economically significant. On the other hand, having another transportation method influences the entry of charter banks over free banks. The pattern of coefficients renders it likely that some charter banks entered alongside those canals and rivers that were in existence before railroads reached the area.

4.3 Determinants of Bank Entry by Year (1837-1861)

The decade-level regressions indicate that county-level factors were not driving the connection between new banks and the growing railroad system. We now examine when banks

²⁹ Alternatively, banks could have been more stable or profitable when located near railroads.

³⁰ We exclude observations for counties in free banking states prior to their passing a free banking law.

entered relative to a railroad. The dependent variable is the number of banks that entered county i in year t . We use a dummy variable for whether the county gained a railroad during a given year and the percentage change in railroad mileage (rather than the level) for two reasons. First, the approach avoids confounding slow population growth (or other county-level factors) with the sudden entry of railroads. While railroads were likely to have increased the growth of population, it was likely to have taken a few years. Second, the approach identifies the immediate effect of railroad entry on banks rather an effect commencing years later. For instance, the change in the railroad dummy will only take a value of 1 in one period, meaning if it did not have an immediate effect on banks then our models would not pick it up.³¹ We also include the previous and forward change in the railroad variable to further pinpoint the timing of bank entry. The regression is:

$$NewBanks_{i,t} = \beta_1 \Delta Rail_{i,t-1} + \beta_2 \Delta Rail_{i,t} + \beta_3 \Delta Rail_{i,t+1} + \beta_4 X_{i,d} + \beta_5 \Delta FBLaw_{i,t} + T_t \quad (3)$$

$$+ u_i + e_i ,$$

where u_i is a vector of county-level fixed effects and the other controls retain their previous definitions. The county fixed effect helps account for other unobservable characteristics.³²

As shown in Table 5, the timing of railroad entry seems important. A county that gained a railroad would expect to gain 0.008 new banks that year, 0.063 new banks the year after, but

³¹ While the change in railroad miles sometimes takes a positive value in multiple years, the majority of the changes took place in a relatively few years.

³² The results are not sensitive to the inclusion of a county-specific time trend.

would also have gained 0.036 fewer banks the year before. The contemporary and lagged coefficients on the railroad variables are thus large relative to the mean number of banks entering a county in a given year (0.08). The contemporaneous coefficients on the change in railroad miles are also statistically significant but are smaller than the lagged coefficients.

Once again rivers and canals attracted banks over time. A county with a river or a canal received 0.100 and 0.034 more banks a year respectively. It is important to note, however, that these variables are essentially county fixed effects. Therefore, the significant coefficients tell us that the transportation methods made it more likely that a bank would enter a county but do not say much about when that entry was likely to occur. Indeed, if we were to account for the timing of counties that gained a canal after 1837, we do not find a contemporaneous correlation between it and bank entry.

While we chose to include only a single lead and lag of each railroad variable, the regression model could have included any number of leads or lags. To show that the results are not sensitive to this choice, we estimate separate regressions for leads and lags up to four years. We present the railroad coefficients and their standard errors in Figure 6.³³ The coefficient on each leading variable is not statistically significant and very close to zero. On the other hand, banks are significantly more likely to enter a county one to three years after a railroad.

We also ran two robustness checks on the data (Table 6). First, we replaced the dependent variable with the number of entering banks that survived 3 or more years to remove fraudulent banks. These longer lived banks, once again, have the strongest connection to rails.

³³ Each model includes fixed effects for counties and years, and a dummy variable for free banking.

For instance, a county that gained a railroad would be expected to have gained 0.037 banks that year, and 0.57 banks the year after even after controlling for county-fixed effects and a county-specific linear trend. Given that the average number of entering stable banks was about 0.046 a year, the effects of the railroad variables are larger for the entry of stable banks than for all banks. Second, we separated the regressions by bank type to see whether the different chartering processes affected the actions of banks. It appears to matter; charter banks moved into an area just after it got a railroad or contemporaneously to getting one. On the other hand, the railroad coefficients are not statistically significant for free banks.

4.4 Tightening the Geographic Unit

The previous panel regression identified the effect of railroads on new bank entry at the county-level in order to control for traditional boundaries and state regulation. However, these counties differ considerably in size. Even without the aggregation of those counties whose boundaries changed into “super-counties” with constant external geographic borders, Midwestern counties in 1860 varied in size by a factor of 7.5, from just 165 square miles to 1,238 square miles. Such size variations increase the likelihood that larger counties will have specific features or attributes—for example, a bank or a railroad—than smaller counties even if these features or attributes are randomly distributed, thereby biasing our association of these features.

One solution to this problem is to examine the joint association of features in arbitrarily distributed but identically sized areas. Such areas should exhaust the space but not overlap one another—that is each feature is in only one area and every feature is within an area. Borrowing from urban economics, we filled the area covered by the sample with hexagons, each ten miles

across from side-to-side, using an ArcGIS user-written script.³⁴ This generated a “fishnet” or “beehive” of 3,542 hexagons, each with an area of 86.6 square miles or about half the area of the smallest county in the Midwest.

The approach allows us to more closely match railroad and bank locations; however, it still has some limitations. First, some hexagons extend (slightly) beyond the boundaries of the seven states or include bodies of water.³⁵ For instance, in Figure 7, we see that several hexagons have little to no land in them at all. Second, the GPS locations of banks are somewhat noisy. Because we do not have the street addresses of each bank, we place banks at the center of the town they are located in. Therefore, those banks that are located on the border of a hexagon might very well be on the other side of that border. As a result, we might expect more banks to enter just before a rail arrived.

Because the limited geographic area in each hexagon, we concentrate on the change in the railroad dummy rather than the percent change in railroad miles. Moreover, as many hexagons span two different states, we cannot add the change in the free bank dummy. The model, therefore, includes hexagon fixed effects in order to capture the other transportation methods and any other time invariant characteristics. Figure 8 contains the coefficients on the change in the railroad miles for various leads and lags. While the coefficients on the leading variables are larger than they were for the cross-country sample, only lags of two and three years

³⁴ Our choice of ten miles reflected our opinion that this distance was one that contemporaries could traverse on foot (infrequently!) and certainly cover by horseback or wagon fairly routinely.

³⁵ As the hexagons were chosen to cover the whole area, they cannot be adjusted to better fit the underlying geography.

are statistically significant. These data thus confirm that the new banks were springing up along the railroads rather than somewhere else.

5. Decomposing Railroads by the Direction of Track (1837-1861)

The previous sections have shown that existing banks helped lay the foundation for the railroad network, whereas new banks quickly sprouted up along the new routes. So far, however, we have not addressed what aspect of railroads attracted those banks. In this section, we attempt to understand the decision of banks by separating railroads into those whose track ran North-South versus East-West. Railroads that ran East-West stretched out further west and carried both freight and passengers potentially to East Coast financial and commercial centers, whereas railroads that ran North-South were generally shorter and carried goods to and from the large cities on the Great Lakes and large rivers such as the Mississippi and Ohio. In this way, if banks were attracted to the potential population gains, we would expect them to primarily locate along East-West railroads. However, if banks were interested in facilitating trade with the South, we would expect them to primarily locate along North-South railroads. We test these hypotheses by splitting the railroad variables in models (2) and (3) based on their direction.

Table 7 shows that early banks might have been attracted to East-West railroads, but later ones seem to be drawn to North-South routes. During the 1840s, the coefficients on both East-West railroad variables are statistically and economically significant, whereas the coefficients on both North-South railroad variables are not. A county that gained 25 miles of East-West railroad during the decade was expected to gain 1.175 new banks, while a county gaining 25 miles of North-South railroad was expected to gain only an insignificant 0.225 banks. During the 1850s, however, 25 East-West miles would lead to only 0.35 more banks whereas 25 North-South miles

would lead to 0.675 more banks. The differing results are likely due to the different types of banks that entered in each decade. During the 1840s, only charter banks could be created, and, due to the large requirements placed on them by state legislatures, they might have needed more immediate access to a larger population base to be deemed likely to succeed. However, the passage of free banking laws allowed new banks to issue large numbers of notes with relatively little capital, and thus free banks might have been more inclined to move to rural areas albeit ones with trading options.

By estimating equation (3), we can further sort through decision-making of banks. In Table 8, we see that North-South railroads are most associated with the timing of bank entry. The lagged and contemporaneous coefficients on both the N-S railroad dummy and miles are generally statistically and economically significant, while no coefficients on the E-W railroad variables are significant. Once again this is likely due to the effect of free banks and charter banks, as free banks were better equipped to enter quickly after railroads.

The data thus suggest that banks, especially later entrants, were attracted railroads because of their opening of trading routes. These small banks could provide trade credit and working capital to farmers and manufacturers that were shipping their goods down the Mississippi or up the Great Lakes.

6. Conclusion

The stories of American industrialization often have banks and railroads at their heart. However, these two factors have most often been studied separately rather than together. We show that the two are not separate entities but rather were intimately connected, and that their relationship evolved over time.

Banks and bankers played a central role in the initial spread of rail transportation. For instance, at the very start of the railroad age on February 19, 1827, about two dozen of Baltimore's leading citizens gathered at the home of George Brown, a partner with his father in the banking firm of Alexander Brown and Son, to hear the report of a committee chaired by Philip Thomas, the president of the Mechanics Bank. The committee was charged with addressing the question of how Baltimore should respond to the commercial challenges posed to the city by New York's Erie Canal and Philadelphia's Main Line canal, but instead of recommending the construction of a canal, they recommended the construction of a railroad across the Allegheny Mountains to the Ohio River and the Baltimore and Ohio Railroad was quickly formed. The newly chartered railroad opened its subscription books to the public from March 20, 1827 through March 31 at the Mechanics Bank in Baltimore, the Farmers' Branch Bank in Frederick, and the Hagerstown Bank in Hagerstown. (Stover 1987).

As this recounting of the origins of the B&O Railroad shows, banks and bankers played a central and critical pioneering role: finance clearly led the process (Rousseau and Wachtel 1998, Rousseau and Sylla 2005, Bordo and Rousseau 2012). And while the leadership of these large eastern financiers over successor institutions was largely preordained, we find that large banks in the Midwest also helped form the anchors of the region's railroad network.

In a few locations, banks and railroads went hand-in-hand. We have already described how the Michigan Territorial Legislature in 1835 chartered the Erie and Kalamazoo Bank in Adrian as an adjunct to the railroad of the same name and the Bank of Pontiac as a side venture of the Detroit and Pontiac Railroad. Another historian of the period remarked that "Strange as it may now seem to us, the combination of a railroad and a bank was no new proposition" before going on to describe the passage of "An Act to incorporate the Macomb and Saginaw Railroad

Company and for other purposes”—the principal of which turned out to be the establishment of a bank in Mt. Clemens under the corporate name “The President, Directors and Company of the Bank of Macomb County,” speculating that the popularity of railroad projects was such that any related bank stood to benefit, just days before Michigan became a state (1882, pp. 918-9).

Over time, the transportation revolution, and railroads in particular, opened up opportunities for new banks. The arrival of a railroad brought with it the potential for commercial development and cross-country trade to locations along the new route. New banks quickly moved in to take advantage of these opportunities. We find that nearly half of the new Midwest banks that entered after 1840 opened within a few years of a railroad’s arrival in their county.

The financial system and its banks not only funded the initial expansion of railroads, but also helped to improve business conditions by following the railroads into undeveloped lands where new communities and older hamlets became vibrant centers of local activity. Railroads arrived at a time when the energy of the populace was high, and in the midst of the nation’s first wave of corporate capitalism. They, along with the banks that came with them, proceeded to break the pattern of economic fragmentation that hampered regional integration more quickly than would have been possible otherwise, and rendered the links from financial factors to real activity established early in the nation’s history stronger and even more secure.

Appendix – Coding Railroad Directions and Interchanges

Rail lines were classified as “East-West” or “North-South” (mutually exclusive) based upon whether the dominant direction of travel along the line (not just in the vicinity of a specific location) was to points east or west versus north or south. Thus, for example, the Illinois Central is classified as a NS railroad whereas the Ohio and Mississippi RR (which runs from Cincinnati to St. Louis) was EW. Similarly, the Pittsburgh, Fort Wayne and Chicago RR is classified as EW although it runs NW from Pittsburgh to Fort Wayne. The breakdown is seen in Figure A.I. A few railroads that could have been classified either way. They have been classified according to the direction of the more major line to which they connected.

Points where EW and NS lines intersect have been tagged (as points) and coded with the earliest date at which it became possible to switch from an EW line to a NS line. Note that this date is simply the earliest date at which it was possible to switch from railroads headed in one direction to an orthogonal direction. This was not necessarily the earliest date at which one had the choice to travel in both orthogonal directions. Reality, of course, is more complicated.

Indianapolis, for example has four distinct EW-NS intersections within 2.5 miles of one another with dates 1851, 1852, 1852 and 1853. Moreover, Sidney, Ohio has an EW railroad entering in 1853 and leaving in 1854 and a NS railroad entering in 1857 and leaving in 1859. It, of course, is classified as having an EW-NS interchange from 1857.

Whenever possible, railroad lines that were very close together but did not touch were included as interchanges. For instance, the GIS network shows the Greenville & Miami RR (built 1852) intersecting with the Columbus, Piqua and Indiana RR (built 1859) just outside Union City but within a couple of hundred feet of the Bellefontaine and Indiana RR (built 1854) to which it does not (seemingly) connect directly. At the same time, care was taken to leave out railroads

that were very close together but had a geographic impediment between them. For instance, railroads running on opposite sides of the Mississippi River are close, but the ferry across the river was probably expensive and almost certainly risky and time consuming.

Bibliography

Anonymous, *History of Macomb County, Michigan : containing an account of its settlement, growth, development and resources, churches, schools and societies ; portraits of prominent men and early settlers* (Chicago: Leeson, 1882).

---, *The Merchants and Bankers' almanac* (New York: J. S. Homans, s.d.).

Appleton, D. and Company., "Appletons' illustrated railway and steam navigation guide," (New York, N.Y.: D. Appleton & Co., 1847).

Atack, Jeremy, "On the Use of Geographic Information Systems in Economic History: The American Transportation Revolution Revisited," *Journal of Economic History*, 73 (2013), 313-338.

Atack, Jeremy, Fred Bateman, Michael Haines, and Robert A Margo, "Did Railroads Induce or Follow Economic Growth? Urbanization and Population Growth in the American Midwest, 1850-1860," *Social Science History*, 34 (2010), 171-197.

Atack, Jeremy, Michael Haines, and Robert A Margo, "Railroads and the Rise of the Factory: Evidence for the United States, 1850-1870," in *Economic Evolution and Revolutions in Historical Time*, Paul Rhode, Joshua Rosenbloom, and David Weiman, eds. (Palo Alto: Stanford University Press, 2011).

Atack, Jeremy, and Matthew Jaremski, "Quantifying Wildcat Banking," Vanderbilt University; Colgate University, 2012.

Atack, Jeremy, and Robert A. Margo, "The Impact of Access to Rail Transportation on Agricultural Improvement: The American Midwest as a Test Case, 1850-1860," *Journal of Transportation and Land Use*, 4 (2011).

- Baum-Snow, Nathaniel, "Did Highways Cause Suburbanization?," *The Quarterly Journal of Economics*, 122 (2007), 775-805.
- Bodenhorn, Howard, and David Cubares, "Title," Working Paper No. 15997, 2010.
- Bordo, Michael D., and Peter L. Rousseau, "Historical Evidence on the Finance-Trade-Growth Nexus," *Journal of Banking and Finance*, 36 (2012), 1236-1243.
- Burton, Clarence Monroe, M. Agnes Burton, Herbert Tenney Orren Blue, and Gordon K Miller, eds., *History of Wayne County and the city of Detroit, Michigan* (Chicago, Detroit, S.J. Clarke Pub. Co., 1930).
- Callender, G. S., "The Early Transportation and Banking Enterprises of the States in Relation to the Growth of Corporations," *The Quarterly Journal of Economics*, 17 (1902), 111-162.
- Carter, Susan B., Scott Sigmund Gartner, Michael R. Haines, Alan L. Olmstead, Richard Sutch, Gavin Wright, and Louis P. Cain, *Historical Statistics of the United States Millennial Edition Online* (New York: Cambridge University Press, 2006).
- Cobb, Charles, *American railway guide, and pocket companion for the United States ... together with a complete railway map* (New York,: C. Dinsmore & Co., 1853).
- Cronon, William, *Nature's metropolis : Chicago and the Great West* (New York: W. W. Norton, 1991).
- Disturnell, John, *Disturnell's guide through the middle, northern, and eastern states containing a description of the principal places, canal, railroad, and steamboat routes, tables of distances, etc. : compiled from authentic sources* (New York: J. Disturnell, 1847).
- Doggett, John, *Doggett's railroad guide and gazetteer for--1848--with sectional maps of the great routes of travel* (New York: John Doggett Jr. proprietor 64 Liberty Street. Also for

sale by ... 14 others in 12 cities : S.W. Benedict stereotyper and printer 16 Spruce Street., 1848).

Donaldson, Dave, and Richard Hornbeck, "Railroads and American Economic Growth: A "Market Access" Approach," Harvard University, 2012.

Dunbar, Willis Frederick, *All aboard! A history of railroads in Michigan* (Grand Rapids, Mich.,: W. B. Eerdmans Pub. Co., 1969).

Dwyer, Gerald, and Iftekhar Hasan, "Suspensions of Payments, Bank Failures and the Nonbank Publics' Losses," *Journal of Monetary Economics*, 54 (2007), 565-580.

Economopoulos, Andrew J., "Illinois Free Banking Experience," *Journal of Money, Credit and Banking*, 20 (1988), 249-264.

Fishlow, Albert, *American railroads and the transformation of the antebellum economy* (Cambridge,: Harvard University Press, 1965).

Fogel, Robert William, *Railroads and American economic growth: essays in econometric history* (Baltimore,: Johns Hopkins Press, 1964).

Goodrich, Carter, ed., *Canals and American economic development* (New York,: Columbia University Press, 1961).

Grossman, James R., Ann Durkin Keating, and Janice L. Reiff, *The encyclopedia of Chicago* (Chicago ; London: University of Chicago Press, 2004).

Haines, Michael R, and Inter-university Consortium for Political and Social Research., *Historical, Demographic, Economic, and Social Data: The United States, 1790-2002* (Inter-university Consortium for Political and Social Research (ICPSR) [distributor], 2010).

- Hammond, Bray, *Banks and politics in America, from the Revolution to the Civil War*
(Princeton,: Princeton University Press, 1957).
- Hunter, Louis C., *Steamboats on the Western rivers; an economic and technological history*
(Cambridge,: Harvard University Press, 1949).
- Inter-university Consortium for Political and Social Research, *Historical, Demographic,
Economic, And Social Data: The United States, 1790-1970* (1979).
- James, John A., "Banking Market Structure, Risk, and the Pattern of Local Interest Rates in the
United States, 1893-1911," *The Review of Economics and Statistics*, 58 (1976), 453-462.
- Jaremski, Matthew, and Peter L. Rousseau, "Banks, Free Banks and Economic Growth,"
Economic Inquiry, 51 (2013), 1603-1621.
- Levine, Ross, "Financial Development and Economic Growth: Views and Agenda," *Journal of
Economic Literature*, 35 (1997), 688-726.
- , "Finance and Growth: Theory and Evidence," in *Handbook of Economic Growth*, P. Aghion,
and S. N. Durlauf, eds. (Amsterdam: North-Holland, 2005).
- Lloyd, E., *Lloyd's American guide : containing new arranged time tables, so simple and correct
that a child can understand them* (Philadelphia: E. Lloyd, 1857).
- Meints, Graydon M., *Michigan railroad lines* (East Lansing, Mich.: Michigan State University
Press, 2005).
- Paxson, Frederic L., "The Railroads of the "Old Northwest" before the Civil Wat," *Transactions
of the Wisconsin Academy of Sciences, Arts, and Letters*, 17 (1914), 247-274.
American railroad journal, and advocate of internal improvements
(<http://digital.library.umsystem.edu/cgi/t/text/text-idx?page=home;c=arj>, s.n.).

- Poor, Henry Varnum, *History of the railroads and canals of the United States of America* (New York,: A. M. Kelley, 1970).
- Rajan, Raghuram G , and Rodney Ramcharan, "Title," Working Paper No. 14347, 2008.
- Rockoff, Hugh, "The Free Banking Era: A Reexamination," *Journal of Money, Credit, and Banking*, 6 (1974), 141-167.
- Rolnick, Arthur J., and Warren Weber, "The Causes of Free Bank Failures: A Detailed Examination," *Journal of Monetary Economics*, 14 (1984), 269-291.
- Rolnick, Arthur J., and Warren E. Weber, "New Evidence on the Free Banking Era," *The American Economic Review*, 73 (1983), 1080-1091.
- Rousseau, Peter L. , and Richard Sylla, "Emerging Financial Markets and Early U.S. Growth," *Explorations in Economic History*, 42 (2005), 1-26.
- Rousseau, Peter L., and Paul Wachtel, "Financial Intermediation and Economic Performance: Historical Evidence from Five Industrialized Countries.," *Journal of Money, Credit, and Banking*, 30 (1998), 657-678.
- Segal, Harvey H., "Cycles of Canal Construction," in *Canals and American Economic Development.*, Carter Goodrich, ed. (New York: Columbia University Press, 1961).
- Snowden, Kenneth, "The Evolution of Interregional Mortgage Lending, 1870-1940: The Life Insurance-Mortgage Company Connection," in *Coordination and Information: Historical Perspectives on the Organization of Enterprise*, N. Lamoreaux and D. Raff, ed. (Chicago: University of Chicago Press, 1995).
- Stover, John F., *History of the Baltimore and Ohio Railroad* (West Lafayette, Ind.: Purdue University Press, 1987).

- Sullivan, Richard, "Regulatory Changes and the Development of the U.S. Banking Market, 1870-1914: A Study of Profit Rates and Risk in National Banks," in *The Origin and Development of Financial Institutions and Markets*, Jeremy Atack and Larry Neal, ed. (Cambridge: Cambridge University Press, 2007).
- Sylla, Richard, "Federal Policy, Banking Market Structure, and Capital Mobilization in the United States, 1863-1913," *The Journal of Economic History*, 29 (1969), 657-686.
- Taylor, George Rogers, and Irene D. Neu, *The American railroad network, 1861-1890* (Cambridge,: Harvard University Press, 1956).
- Thorndale, William, and William Dollarhide, *Map guide to the U.S. federal censuses, 1790-1920* (Baltimore, Md.: Genealogical Publishing Co., 1987).
- Utley, H.M "The Wild Cat Banking System of Michigan," *Pioneer Collections of the Pioneer Society of the State of Michigan*, 5 (1884), 209-222.
- Weber, Warren E., "Census of State Banks," Minneapolis Federal Reserve Bank., ed. (2005).
- Whitford, Noble E, *History of the Canal System of the State of New York, Together with Brief Histories of the Canals of the United States and Canada . Supplement to the Annual Report of the Engineer and Surveyor of the State of New York* (Albany: Brandow Printing Co., 1906).

* We acknowledge the helpful comments of participants at the 7th World Congress of Cliometrics, especially Paul W. Rhode, the 2013 Economic History Association meetings, especially our discussant Peter Temin, and at Williams College.

Table 1: Midwest Banks Near Transportation Networks at Date of Entry

Any Transportation Network (Rail, Canal, River, or Port)				
	Average Distance	% Within 5 Miles	% Within 10 Miles	% Within 15 Miles
All	8.5	61.87%	70.86%	78.42%
Pre-1840	18.3	35.92%	40.78%	48.54%
1840-1849	6.5	61.54%	76.92%	92.31%
Post-1849	6.3	67.95%	77.73%	85.00%
Railroad				
	Average Distance	% Within 5 Miles	% Within 10 Miles	% Within 15 Miles
All	51.8	30.22%	34.71%	41.91%
Pre-1840	156.6	2.91%	3.88%	4.85%
1840-1849	204.7	7.69%	7.69%	7.69%
Post-1849	22.7	37.27%	42.73%	51.59%
Canal				
	Average Distance	% Within 5 Miles	% Within 10 Miles	% Within 15 Miles
All	99.0	10.43%	11.69%	13.13%
Pre-1840	120.2	0.97%	0.97%	0.97%
1840-1849	162.8	0.00%	0.00%	7.69%
Post-1849	93.0	12.95%	14.55%	16.14%
River or Port				
	Average Distance	% Within 5 Miles	% Within 10 Miles	% Within 15 Miles
All	16.1	42.99%	51.08%	58.63%
Pre-1840	21.6	33.01%	36.89%	43.69%
1840-1849	6.6	61.54%	76.92%	92.31%
Post-1849	15.0	44.77%	53.64%	61.14%

Notes: The table presents the percentage of entering banks that were within the defined distance from a transportation network. Banks are sorted into the different decade groups based on their year of entry. Year of bank entry is defined by Weber (2005).

Table 2: OLS Existing Banks' Effects on Railroad Entry (1840-1860)

	Change in Railroad Dummy				% Change in Miles of Railroad			
	1840-1850		1850-1860		1840-1850		1850-1860	
	(1)	(2)	(3)	(4)	(5)	(6)	(7)	(8)
Initial Number of Banks	0.151*** [0.029]	0.132*** [0.038]	0.104 [0.063]	0.085 [0.068]	0.519*** [0.098]	0.471*** [0.129]	0.883*** [0.289]	0.828*** [0.317]
Pop. Density		0.001 [0.001]		0.001 [0.001]		0.003 [0.002]		0.004 [0.005]
Ln(Mfg. Capital P.C.)	0.053** [0.024]	0.043* [0.025]	0.090** [0.044]	0.075 [0.046]	0.126* [0.073]	0.102 [0.073]	0.363** [0.156]	0.320* [0.163]
Ln(Farm Capital P.C.)	0.127*** [0.048]	0.128*** [0.048]	0.282*** [0.093]	0.289*** [0.089]	0.388*** [0.146]	0.390*** [0.147]	0.804** [0.337]	0.823** [0.322]
Canal Dummy	-0.115 [0.091]	-0.117 [0.091]	0.150* [0.087]	0.154* [0.087]	-0.275 [0.271]	-0.278 [0.270]	0.474 [0.334]	0.486 [0.337]
River Dummy	-0.108*** [0.041]	-0.105** [0.041]	-0.143** [0.070]	-0.139** [0.070]	-0.359*** [0.111]	-0.351*** [0.110]	-0.635** [0.249]	-0.624** [0.249]
Great Lakes Dummy	0.000 [0.107]	0.007 [0.108]	0.204** [0.100]	0.210** [0.100]	-0.095 [0.305]	-0.078 [0.304]	0.738 [0.447]	0.755* [0.451]
State Fixed Effects	Yes	Yes	Yes	Yes	Yes	Yes	Yes	Yes
Observations	247	247	214	214	247	247	214	214
R-squared	0.241	0.248	0.210	0.214	0.269	0.274	0.244	0.246

Notes: The dependent variables are changes in the rail variable over a decade. The dummy is the change from zero to one and the miles of railroad is the percentage change (starting from one mile). As there would be no change in the railroad dummy, we exclude counties that had a railroad at the beginning of the period. All money values are deflated to 1860 dollars using Officer (2008). Robust standard errors appear in brackets beneath the coefficients. *, **, and *** denote statistical significance at 10%, 5%, and 1% levels, respectively.

Table 3: OLS Bank Entry and Railroads By Decade (1840-1860)

	# of Banks Entering in Each Decade							
	1840-1850				1850-1860			
	(1)	(2)	(3)	(4)	(5)	(6)	(7)	(8)
Railroad Dummy	0.572* [0.303]	0.550* [0.321]			-0.483 [0.700]	-0.497 [0.706]		
Miles of RR			0.030** [0.015]	0.030* [0.015]			0.016*** [0.005]	0.016*** [0.005]
Pop. Density		0.064 [0.117]		0.051 [0.118]		0.440 [0.519]		0.557 [0.448]
Ln(Mfg. Capital P.C.)	0.012 [0.067]	-0.002 [0.056]	0.010 [0.066]	-0.002 [0.055]	0.759*** [0.230]	0.665** [0.277]	0.613*** [0.235]	0.490* [0.284]
Ln(Farm Capital P.C.)	-0.125 [0.125]	-0.145 [0.125]	-0.154 [0.129]	-0.171 [0.127]	-1.054 [0.690]	-1.166* [0.599]	-1.292** [0.645]	-1.440** [0.563]
Yrs Since Free Banking Law					0.042 [0.063]	0.032 [0.066]	0.022 [0.057]	0.009 [0.061]
Canal Dummy	0.504** [0.245]	0.501** [0.247]	0.489** [0.230]	0.487** [0.232]	1.048* [0.566]	1.040* [0.573]	0.421 [0.350]	0.398 [0.352]
River Dummy	0.267* [0.142]	0.257* [0.154]	0.268** [0.135]	0.260* [0.147]	-0.318 [0.520]	-0.345 [0.520]	-0.239 [0.454]	-0.269 [0.451]
Great Lakes Dummy	0.290* [0.173]	0.300* [0.175]	0.347* [0.177]	0.354** [0.179]	-0.598 [1.128]	-0.566 [1.141]	-1.088 [1.114]	-1.057 [1.119]
State Fixed Effects	Yes	Yes	Yes	Yes	Yes	Yes	Yes	Yes
Observations	248	248	248	248	226	226	226	226
R-squared	0.327	0.328	0.363	0.364	0.275	0.277	0.317	0.321

Notes: The dependent variable is expressed as the number of banks that entered the county during the specified decade. Counties with railroads at the start of the decade are excluded. The railroad dummy denotes counties that had a railroad at any time during the decade. All money values are deflated to 1860 dollars using Officer (2008). Robust standard errors appear in brackets beneath the coefficients. *, **, and *** denote statistical significance at the 10%, 5%, and 1% levels, respectively.

Table 4: OLS Bank Entry By Type (1840-1860)

	# of Banks Entering in Each Decade									
	# of Stable Banks				# of Charter Banks				# of Free Banks	
	1840-1850		1850-1860		1840-1850		1850-1860		1850-1860	
	(1)	(2)	(3)	(4)	(5)	(6)	(7)	(8)	(9)	(10)
Railroad Dummy	0.447 [0.329]		-0.442 [0.490]		0.550* [0.321]		0.248 [0.164]		-0.898 [0.830]	
Miles of RR		0.024 [0.016]		0.009*** [0.003]		0.030* [0.015]		0.007*** [0.003]		0.012* [0.007]
Pop. Density	0.097 [0.121]	0.088 [0.125]	0.732** [0.285]	0.789*** [0.236]	0.064 [0.117]	0.051 [0.118]	0.351 [0.276]	0.423* [0.242]	0.447 [0.592]	0.513 [0.542]
Ln(Mfg. Capital P.C.)	-0.011 [0.057]	-0.011 [0.055]	0.364** [0.151]	0.253* [0.143]	-0.002 [0.056]	-0.002 [0.055]	0.101* [0.060]	0.065 [0.061]	0.640** [0.280]	0.437 [0.292]
Ln(Farm Capital P.C.)	-0.181 [0.128]	-0.201 [0.132]	-0.622** [0.248]	-0.819*** [0.284]	-0.145 [0.125]	-0.171 [0.127]	-0.378 [0.245]	-0.370* [0.208]	-0.954 [0.680]	-1.495** [0.615]
Yrs Since FB Law			-0.067 [0.045]	-0.083** [0.035]			-0.167*** [0.047]	-0.167*** [0.039]	0.311*** [0.105]	0.328*** [0.094]
Canal Dummy	0.453* [0.252]	0.441* [0.237]	0.371 [0.257]	-0.006 [0.193]	0.501** [0.247]	0.487** [0.232]	-0.074 [0.101]	-0.290** [0.114]	1.054* [0.549]	0.523 [0.343]
River Dummy	0.218 [0.156]	0.220 [0.152]	-0.357 [0.371]	-0.293 [0.323]	0.257* [0.154]	0.260* [0.147]	0.061 [0.106]	0.031 [0.090]	-0.469 [0.539]	-0.375 [0.492]
Great Lakes Dummy	0.305* [0.174]	0.349* [0.178]	-0.112 [0.789]	-0.413 [0.802]	0.300* [0.175]	0.354** [0.179]	-0.099 [0.139]	-0.230* [0.134]	-0.513 [1.095]	-1.017 [1.113]
State Fixed Effects	Yes	Yes	Yes	Yes	Yes	Yes	Yes	Yes	Yes	Yes
Observations	248	248	226	226	248	248	226	226	201	201
R-squared	0.307	0.330	0.357	0.386	0.328	0.364	0.335	0.476	0.296	0.308

Notes: The dependent variables are the number of stable, free or charter banks that entered the county during each decade. Stable banks are defined as those that remained in operation for three or more years. Counties with railroads at the beginning of the decade are excluded. States without a free banking law are dropped from the free banking regressions. The railroad dummy denotes counties that had a railroad at any time during the decade. All money values are deflated to 1860 dollars using Officer (2008). Robust standard errors appear in brackets beneath the coefficients. *, **, and *** denote statistical significance at the 10%, 5%, and 1% levels, respectively.

Table 5: Panel OLS - Banks Entry and Railroads By Year (1837-1861)

	# of Banks Entering During Year			
	(1)	(2)	(3)	(4)
Lagged Δ RR Dummy	0.061*	0.063*		
	[0.036]	[0.037]		
Δ RR Dummy	0.006	0.008		
	[0.030]	[0.034]		
Forward Δ RR Dummy	-0.038	-0.036		
	[0.024]	[0.026]		
Lagged % Δ RR Miles			0.030**	0.029**
			[0.013]	[0.014]
% Δ RR Miles			0.023*	0.022*
			[0.012]	[0.012]
Forward % Δ RR Miles			0.001	-0.000
			[0.009]	[0.009]
Δ Free Bank Law	0.033	0.033	0.027	0.027
	[0.029]	[0.031]	[0.030]	[0.032]
Canal Dummy	0.104***		0.102***	
	[0.033]		[0.032]	
River Dummy	0.033*		0.034*	
	[0.019]		[0.019]	
Great Lakes Dummy	0.053		0.052	
	[0.043]		[0.043]	
State Fixed Effects	Yes	No	Yes	No
County Fixed Effects	No	Yes	No	Yes
Year Fixed Effects	Yes	Yes	Yes	Yes
Observations	5,934	5,934	5,934	5,934
R-squared	0.039	0.037	0.039	0.038

Notes: The dependent variables are the number of banks that entered the county during each year. The change in the railroad dummy denotes counties that had their first tracks laid in a given year. All money values are deflated to 1860 dollars using Officer (2008). Robust standard errors appear in brackets beneath the coefficients. *, **, and *** denote statistical significance at the 10%, 5%, and 1% levels, respectively.

Table 6: Panel OLS - Banks Entry and Railroads By Year (1837-1861)

	# of Banks Entering During Year											
	# of Stable Banks				# of Charter Banks				# of Free Banks			
	(1)	(2)	(3)	(4)	(5)	(6)	(7)	(8)	(9)	(10)	(11)	(12)
Lagged ΔRR Dummy	0.055*	0.057*			0.046**	0.045**			0.016	0.019		
	[0.032]	[0.031]			[0.021]	[0.022]			[0.032]	[0.032]		
ΔRR Dummy	0.035	0.037			0.029*	0.028			-0.026	-0.023		
	[0.027]	[0.027]			[0.016]	[0.017]			[0.028]	[0.032]		
Forward ΔRR Dummy	-0.011	-0.008			0.005	0.004			-0.043*	-0.040		
	[0.020]	[0.020]			[0.011]	[0.010]			[0.023]	[0.026]		
Lagged %ΔRR Miles			0.026**	0.025**			0.017**	0.015*			0.015	0.015
			[0.012]	[0.012]			[0.008]	[0.009]			[0.011]	[0.012]
%ΔRR Miles			0.028***	0.027***			0.015**	0.013*			0.008	0.008
			[0.010]	[0.010]			[0.006]	[0.007]			[0.010]	[0.011]
Forward %ΔRR Miles			0.007	0.006			0.002	0.000			0.001	0.001
			[0.008]	[0.007]			[0.004]	[0.004]			[0.009]	[0.008]
ΔFree Bank Law	0.025	0.024	0.020	0.020	0.029*	0.029*	0.027*	0.027*	0.003	0.003	-0.001	-0.001
	[0.025]	[0.025]	[0.025]	[0.025]	[0.015]	[0.015]	[0.015]	[0.015]	[0.027]	[0.028]	[0.027]	[0.029]
Canal Dummy	0.042**		0.040**		0.024*		0.024*		0.078***		0.077***	
	[0.018]		[0.018]		[0.012]		[0.012]		[0.029]		[0.028]	
River Dummy	0.020		0.020		0.025***		0.026***		0.008		0.009	
	[0.012]		[0.012]		[0.007]		[0.007]		[0.019]		[0.019]	
Great Lakes Dummy	0.047*		0.045		0.040**		0.039**		0.014		0.013	
	[0.028]		[0.028]		[0.019]		[0.018]		[0.036]		[0.036]	
State Fixed Effects	Yes	No	No	No	Yes	No	No	No	Yes	No	No	No
County Fixed Effects	No	Yes	Yes	Yes	No	Yes	Yes	Yes	No	Yes	Yes	Yes
Year Fixed Effects	Yes	Yes	Yes	Yes	Yes	Yes	Yes	Yes	Yes	Yes	Yes	Yes
Observations	5,934	5,934	5,934	5,934	5,934	5,934	5,934	5,934	5,934	5,934	5,934	5,934
R-squared	0.023	0.024	0.026	0.026	0.021	0.021	0.021	0.022	0.047	0.045	0.047	0.045

Notes: The dependent variables are the number of banks that entered the county in each year. Stable banks are defined as those that remained in operation for three or more years. The change in the railroad dummy denotes counties that had their first tracks laid in a given year. All money values are deflated to 1860 dollars using Officer (2008). Robust standard errors appear in brackets beneath the coefficients. *, **, and *** denote statistical significance at the 10%, 5%, and 1% levels, respectively.

Table 7: Decomposing Railroads By Direction of Track (1840-1860)

	# of Banks Entering in Each Decade							
	1840-1850				1850-1860			
	(1)	(2)	(3)	(4)	(5)	(6)	(7)	(8)
E-W Railroad Dummy	0.922** [0.465]	0.908* [0.494]			-0.679 [0.526]	-0.668 [0.527]		
N-S Railroad Dummy								
Miles of E-W RR			0.047* [0.024]	0.047* [0.026]			0.013** [0.006]	0.014** [0.006]
Miles of N-S RR			0.009 [0.009]	0.009 [0.009]			0.026** [0.011]	0.027*** [0.010]
Number of NS-EW Interchanges	-0.695 [0.464]	-0.684 [0.480]	-0.792 [0.517]	-0.789 [0.535]	0.262 [0.397]	0.209 [0.393]	-0.508 [0.439]	-0.648 [0.440]
Pop. Density		0.034 [0.117]		0.015 [0.131]		0.386 [0.532]		0.791* [0.418]
Ln(Mfg. Capital P.C.)	0.038 [0.056]	0.030 [0.049]	0.030 [0.057]	0.027 [0.050]	0.728** [0.291]	0.657** [0.319]	0.714** [0.286]	0.569* [0.308]
Ln(Farm Capital P.C.)	-0.097 [0.110]	-0.109 [0.114]	-0.135 [0.119]	-0.140 [0.120]	-1.059* [0.603]	-1.153** [0.527]	-1.239** [0.620]	-1.430** [0.558]
Yrs Since FB Law					0.024 [0.064]	0.018 [0.065]	0.024 [0.054]	0.009 [0.056]
Canal Dummy	0.414** [0.203]	0.414** [0.204]	0.436** [0.205]	0.436** [0.205]	1.080** [0.542]	1.078* [0.548]	0.429 [0.352]	0.402 [0.354]
River Dummy	0.209* [0.110]	0.204* [0.121]	0.209** [0.099]	0.207* [0.111]	-0.363 [0.534]	-0.387 [0.535]	-0.271 [0.474]	-0.326 [0.477]
Great Lakes Dummy	0.219 [0.182]	0.225 [0.188]	0.333* [0.198]	0.335 [0.203]	-0.573 [1.160]	-0.555 [1.168]	-1.096 [1.153]	-1.076 [1.146]
State & Year Dummies	Yes	Yes	Yes	Yes	Yes	Yes	Yes	Yes
Observations	248	248	248	248	226	226	226	226
R-squared	0.359	0.360	0.404	0.404	0.278	0.280	0.325	0.331

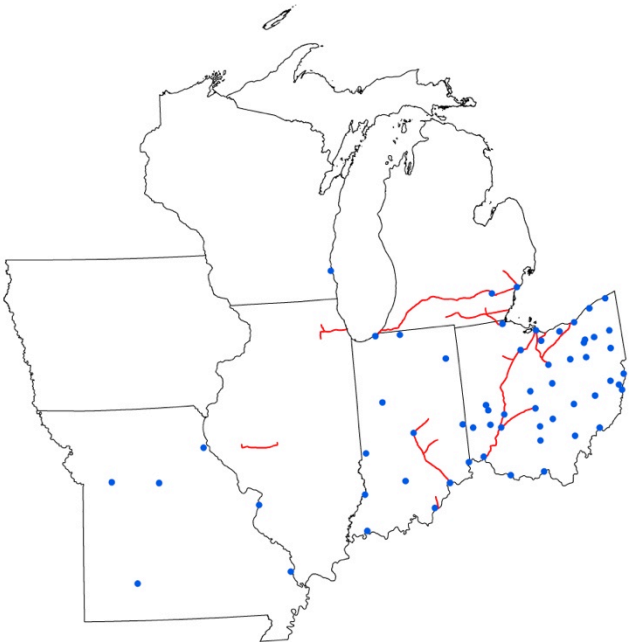
Notes: The dependent variables are the number of banks that entered the county in each decade. The railroad dummies denotes counties that had a railroad of that type at any time during the decade. All money values are deflated to 1860 dollars using Officer (2008). Robust standard errors appear in brackets beneath the coefficients. *, **, and *** denote statistical significance at the 10%, 5%, and 1% levels, respectively.

Table 8: Panel OLS - Decomposing Railroads By Track Direction (1837-1861)

	# of Banks Entering During Year			
	(1)	(2)	(3)	(4)
Lagged Δ RR EW Dummy	0.018 [0.039]	0.021 [0.042]		
Δ RR EW Dummy	-0.001 [0.036]	0.002 [0.040]		
Forward Δ RR EW Dummy	-0.006 [0.031]	-0.003 [0.033]		
Lagged % Δ RR EW Miles			0.015 [0.015]	0.014 [0.015]
% Δ RR EW Miles			0.014 [0.013]	0.012 [0.015]
Forward % Δ RR EW Miles			0.002 [0.012]	0.001 [0.011]
Lagged Δ RR NS Dummy	0.081* [0.049]	0.078 [0.049]		
Δ RR NS Dummy	0.176** [0.077]	0.173** [0.078]		
Forward Δ RR NS Dummy	-0.002 [0.038]	-0.006 [0.041]		
Lagged % Δ RR NS Miles			0.035* [0.020]	0.032 [0.021]
% Δ RR NS Miles			0.078*** [0.029]	0.075** [0.030]
Forward % Δ RR NS Miles			0.025 [0.016]	0.023 [0.016]
Δ Free Bank Law	0.030 [0.030]	0.030 [0.032]	0.022 [0.031]	0.022 [0.033]
Canal Dummy	0.103*** [0.032]		0.100*** [0.031]	
River Dummy	0.033* [0.019]		0.034* [0.019]	
Great Lakes Dummy	0.053 [0.043]		0.050 [0.042]	
State Fixed Effects	Yes	No	Yes	No
County Fixed Effects	No	Yes	No	Yes
Year Fixed Effects	Yes	Yes	Yes	Yes
Observations	5,934	5,934	5,934	5,934
R-squared	0.042	0.040	0.044	0.043

Notes: The dependent variables are the number of banks that entered the county in each year. The change in the railroad dummy denotes counties that had their first tracks laid in a given year. All money values are deflated to 1860 dollars using Officer (2008). Robust standard errors appear in brackets beneath the coefficients. *, **, and *** denote statistical significance at the 10%, 5%, and 1% levels, respectively.

Figure 1: The Location of Banks and Railroads in 1850 and 1860

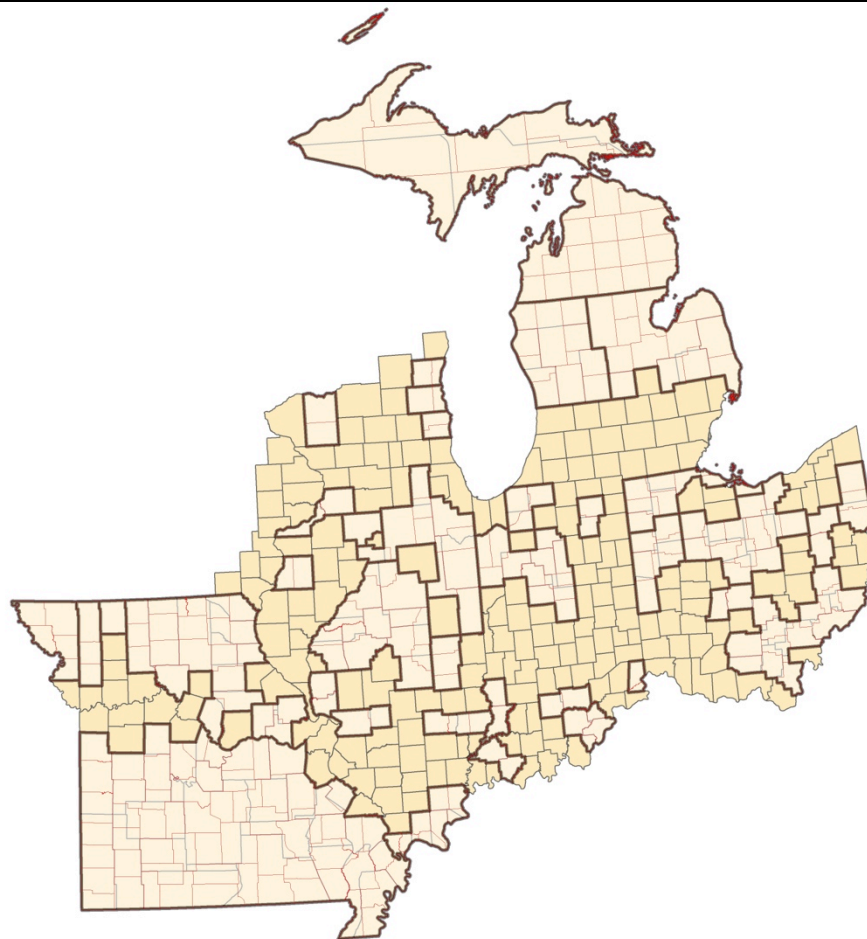


1850



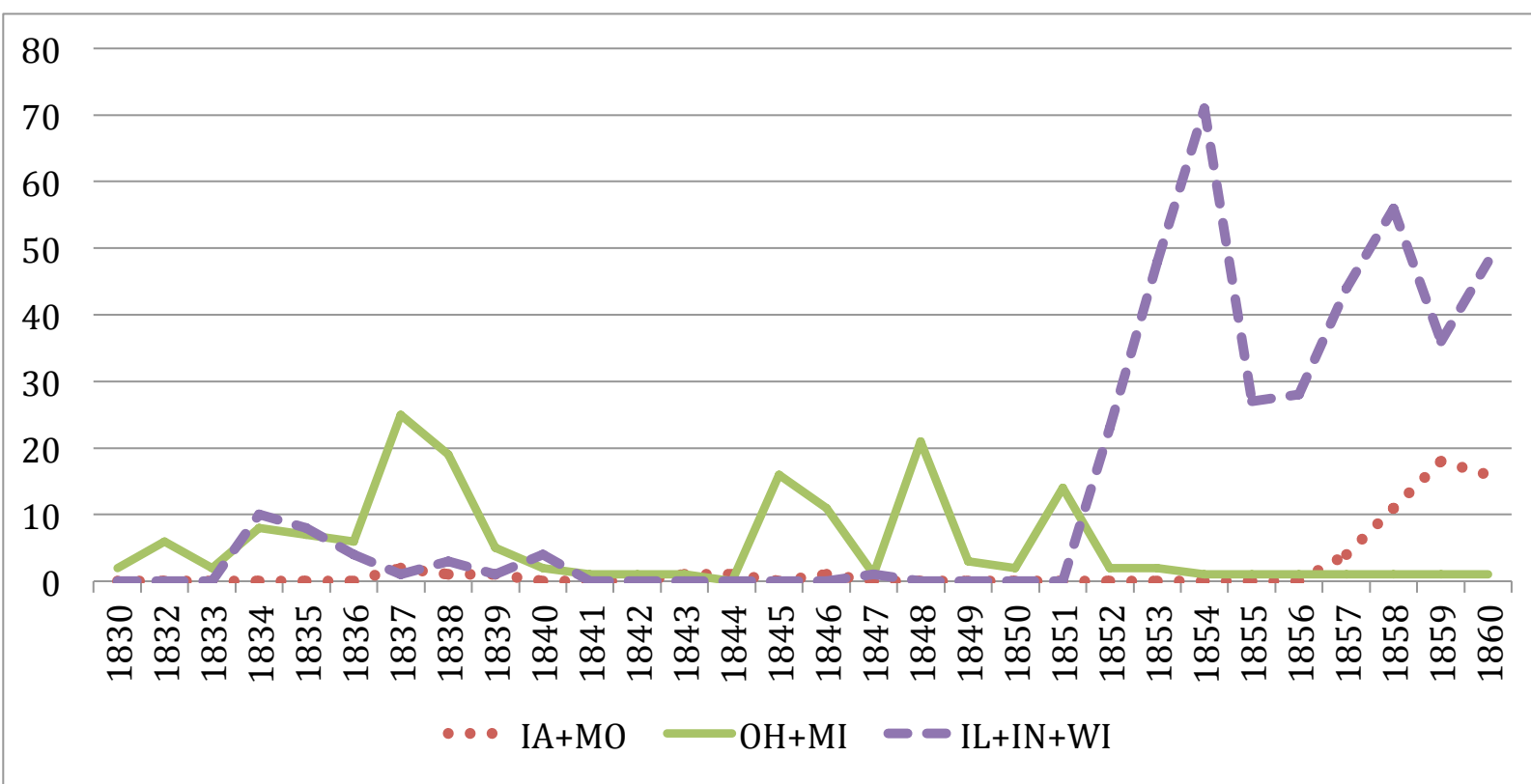
1860

Figure 2: "Counties" in the Midwestern Sample (1837-1861)



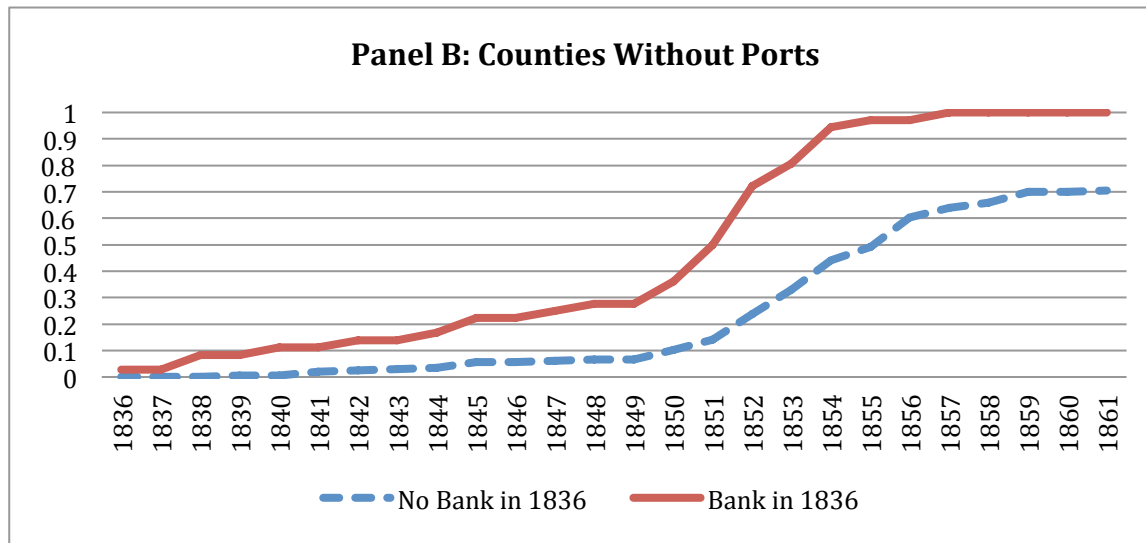
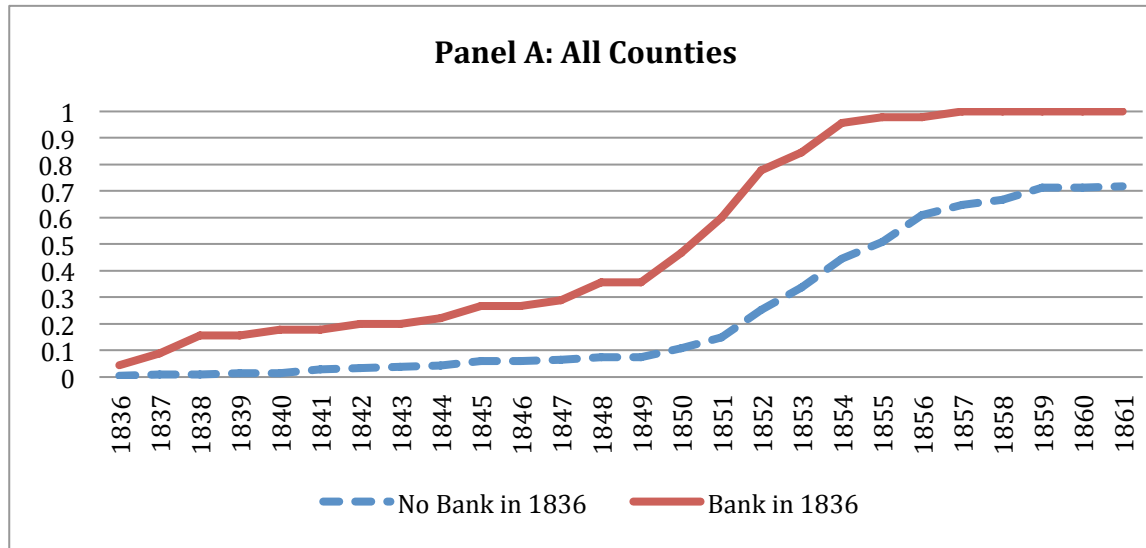
Notes: The darker shaded counties are those counties whose boundaries did not change between 1840 and 1860. The heavily outlined lighter shaded areas represent aggregations of counties whose internal boundaries changed (shown by the interior lines) but whose external boundary did not. Areas not shown were not properly organized or attached in 1840 and thus could not be combined (parts of northern and western Wisconsin).

Figure 3: New Banks By Year and States (1830-1860)



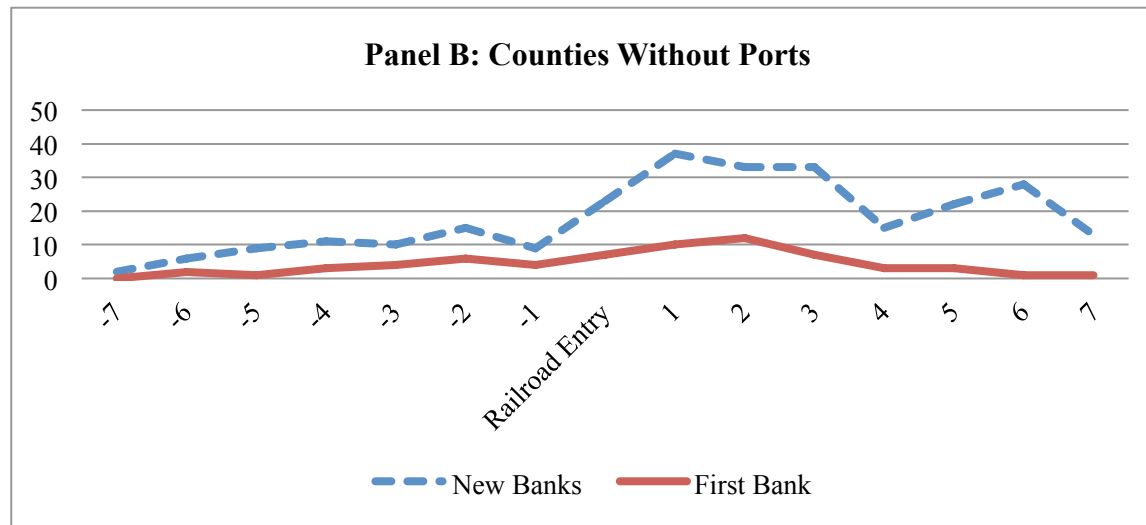
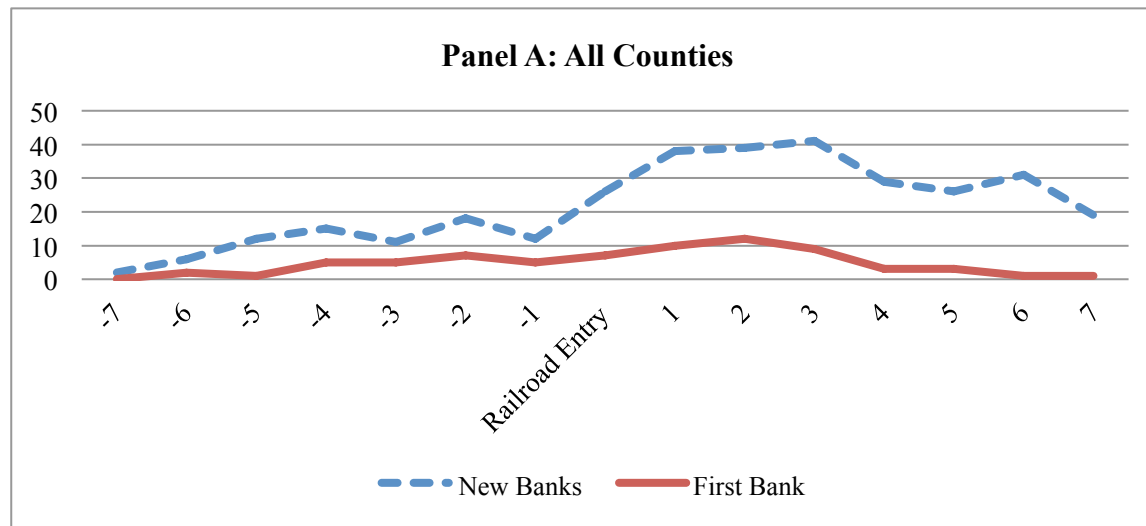
Notes: The number of new banks established in the specified group of states each year.

Figure 4: Fraction of Counties with Railroad, 1837-1861.



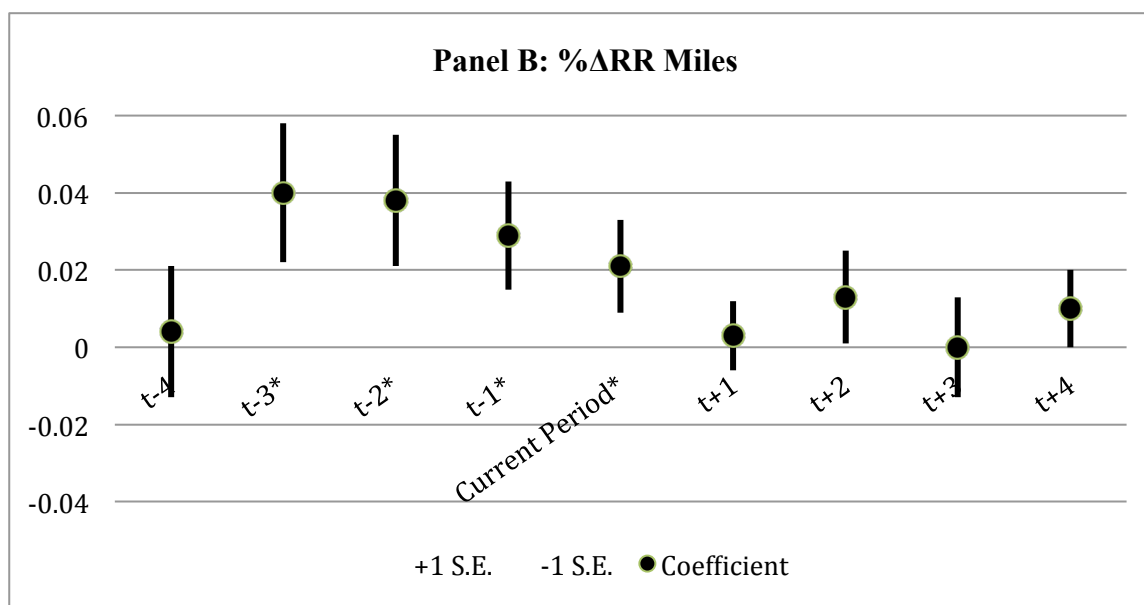
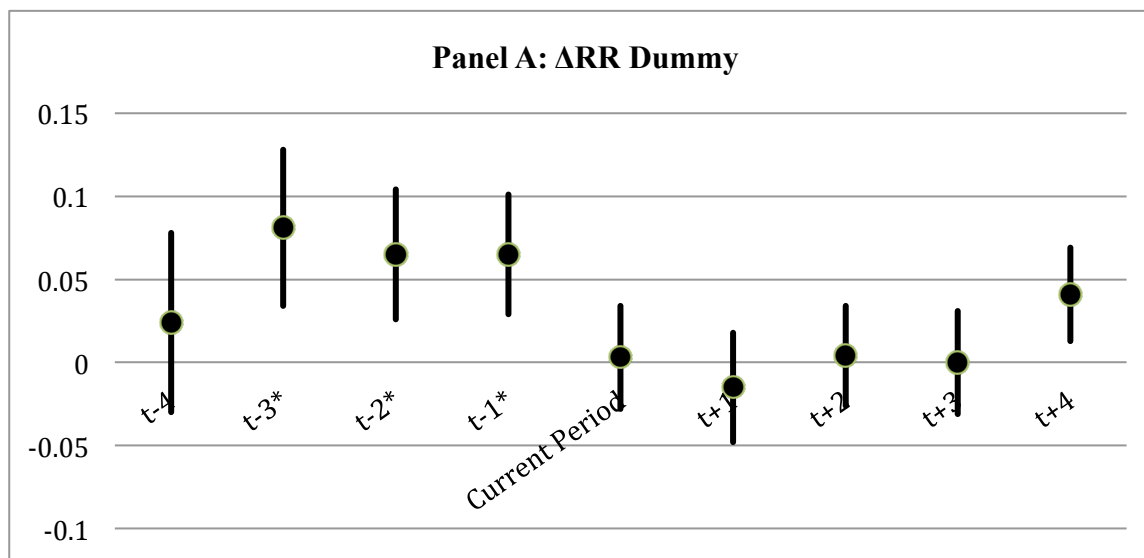
Notes: Counties divided based on whether they had a bank in 1836. Panels show the fraction of each group that had a railroad in each subsequent year. The few railroads that existed before 1836 arrived after the location had a bank. Counties without ports are counties not on the Great Lakes.

Figure 5: Number of Banks Entering Relative to Year of Railroad Entry, 1837-1861



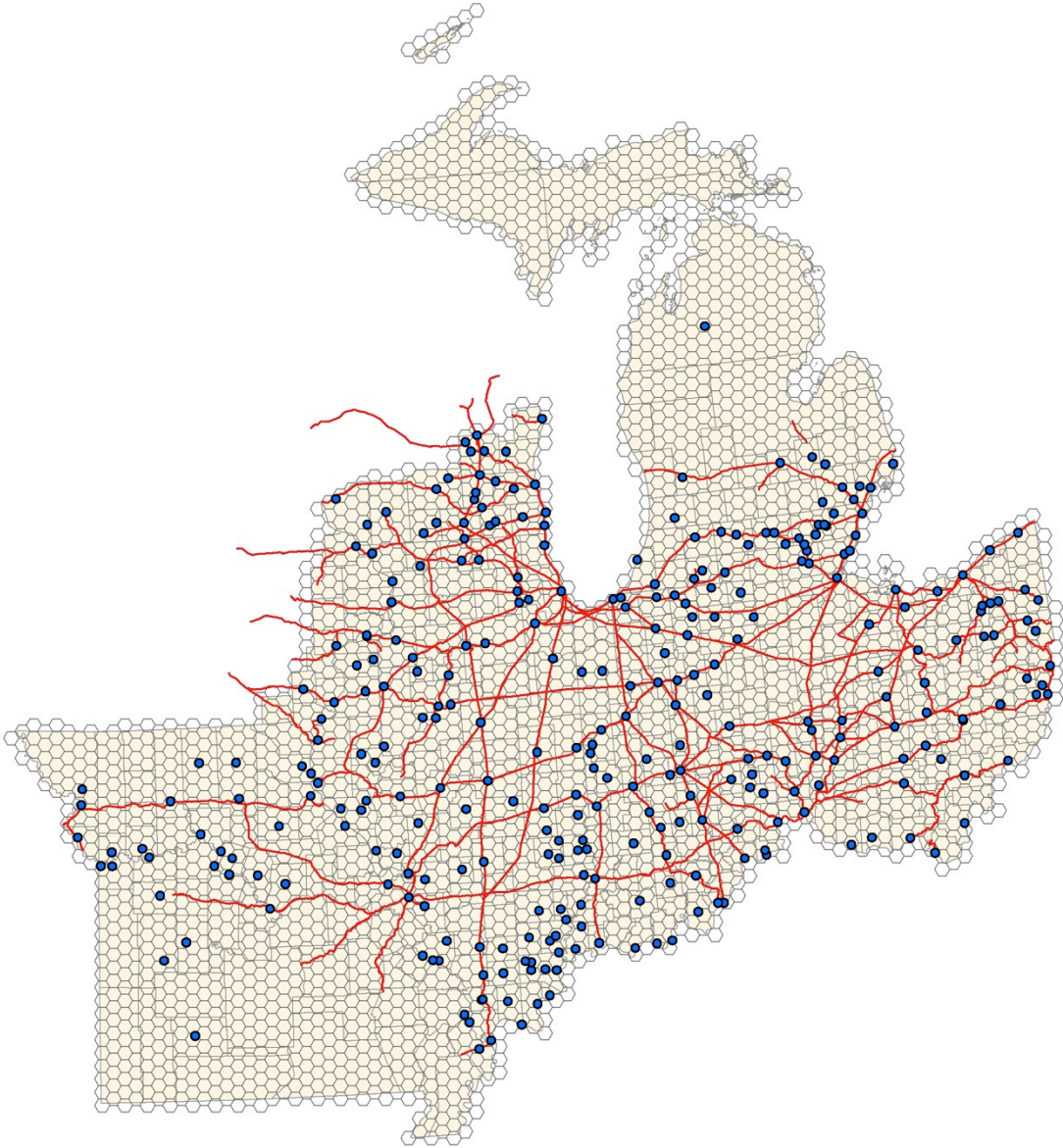
Notes: Counties that received a bank or a railroad before 1837 are not included. "New Banks" denotes all banks that entered a county, whereas "First Bank" only counts the county's first bank. Year of entry is defined by Weber (2005). Counties without ports denote those counties not on the Great Lakes.

Figure 6: Regression Coefficient on Railroad Measures For Various Leads and Lags



Notes: Coefficients and standard error bands of the change in the specified railroad variable for various leads and lags. Each regression contains one lead or lag, as well as the change in the Free Banking dummy, time-fixed effects, and county-fixed effects. Robust standard errors are used. Those leads and lags that are starred denote coefficients that are statistically greater than 0 at the 10% level or greater.

Figure 7: Banks and Railroads Relative to Constant Arbitrary Geographic Space



Notes: Banks and railroads in 1860 overlaid upon a 10-mile wide 2-Dimensional Beehive

Figure A.1



Notes: Black dotted lines denote those railroads classified as North-South; solid red cross-hatched lines denote railroads classified as East-West