

Analyzing the Case for a Balanced Budget Amendment to the U.S. Constitution*

Abstract

This paper uses the political economy model of Battaglini and Coate (2008) to analyze the impact of a balanced budget rule that requires that legislators do not run deficits. It considers both a strict rule which cannot be circumvented and a rule that can be overridden by a super-majority of legislators. A strict rule leads to a gradual but substantial reduction in the level of public debt. In the short run, citizens will be worse off as public spending is reduced and taxes are raised to bring down debt. In the long run, the benefits of a lower debt burden must be weighed against the costs of greater volatility in taxes and less responsive public good provision. To quantify these effects, the model is calibrated to the U.S. economy. While the long run net benefits are positive, they are outweighed by the short run costs of debt reduction. A rule with a super-majority override has no effect on citizen welfare or fiscal policy.

Marina Azzimonti
Department of Economics
University of Texas
Austin TX 08544
azzimonti@eco.utexas.edu

Marco Battaglini
Department of Economics
Princeton University
Princeton NJ 08544
mbattagl@princeton.edu

Stephen Coate
Department of Economics
Cornell University
Ithaca NY 14853
sc163@cornell.edu

*For research assistance we thank Kazuki Konno, Tim Lin, and Matthew Talbert. For helpful comments and encouragement we thank Marco Bassetto, Narayana Kocherlakota, Nancy Stokey, Javier Diaz-Gimenez and seminar participants at Carnegie Mellon University, the Federal Reserve Bank of Minneapolis, the LAEF Conference at U.C. Santa Barbara, the Midwest Macroeconomic Meetings at the University of Pennsylvania, the Minnesota Workshop on Macroeconomic Theory, North Carolina State University, the Society for the Advancement of Economic Theory Meetings at Kos, the Society of Economic Dynamics Meetings at Prague, University of Southern California, University of Toronto, the Wallis Conference on Political Economy at the University of Rochester, the Wegman's Conference at the University of Rochester, and the Wharton School. Battaglini gratefully acknowledges the hospitality of the Einaudi Institute for Economics and Finance while working on this paper.

1 Introduction

A recurring debate in American politics concerns the desirability of amending the U.S. constitution to require that the federal government operate under a balanced budget rule (BBR). Calls for such a “balanced budget amendment” started in the late 1970s and became particularly strident during the high deficit era in the 1980s and 1990s. Indeed, in 1995 the House approved a balanced budget amendment by 300-132, but the Senate fell one vote short of the two-thirds majority that is needed for constitutional amendments (Schick (2007)).¹ Efforts to pass a balanced budget amendment continue today in the 110th Congress with bills pending in both the House and the Senate.²

While there is no shortage of policy discussion on the pros and cons of passing a balanced budget amendment, there has been remarkably little economic analysis of its likely impact. Indeed, we are not aware of *any* analysis that has tried to shed light, qualitatively or quantitatively, on the likely impact on fiscal policy and citizen welfare. Doubtless this reflects the inherent difficulty of developing an analysis that even begins to capture the key trade-offs. Since it is clear that in a world in which policy is set by a benevolent planner a BBR can only distort policy and hurt citizen welfare, one must begin with a political economy model of fiscal policy. Moreover, the model must be sufficiently rich to be able to capture the short and long run consequences of imposing a BBR on policy and welfare.

The political economy model of fiscal policy recently developed by Battaglini and Coate (2008) (BC) appears a potentially useful framework in which to analyze the issue. The BC framework begins with a tax smoothing model of fiscal policy of the form studied by Barro (1979), Lucas and Stokey (1983), and Aiyagari et. al. (2002). It departs from the tax smoothing literature by assuming that policy choices are made by a legislature rather than a benevolent planner. Moreover, it incorporates the friction that legislators can redistribute tax dollars back to their districts via pork-barrel spending. This friction means that equilibrium debt levels are too high implying that, in principle, imposing a BBR has the potential to improve welfare.

In this paper, we employ the BC model to analyze the impact of imposing a BBR on the U.S.

¹ The U.S. Constitution can be amended in two ways. The first is by a two-thirds vote in both the House and Senate followed by ratification by three-fourths of the states. The second is by two-thirds of the states calling a Constitutional Convention at which three-fourths of the states must ratify the amendment. The latter route to adopting a balanced budget amendment was pursued in the late 1970s but fell four states short of the two-thirds necessary to call a Convention. See Morgan (1998) for a discussion of this effort.

² The Senate bill (SJ Res 24) is sponsored by Senators Lindsay Graham and Jim DeMint and the House bill (HJ Res 45) is sponsored by Representative Kirsten Gillibrand and 31 cosponsors.

federal government. Our hope is not only to contribute to the substantive debate concerning the balanced budget amendment, but also to develop an appreciation for how useful the BC model is for analyzing U.S. fiscal issues. The paper begins by calibrating the BC model to the U.S. economy and argues that the calibrated model fits the data sufficiently well to make using it as a framework to underpin the policy analysis interesting.³ We then study, both qualitatively and quantitatively, the consequences of imposing a BBR. We model a BBR as a constitutional requirement that tax revenues must be sufficient to cover spending and the costs of servicing the debt. Thus, budget surpluses are permitted, but not deficits.⁴ We consider both a strict BBR which cannot be circumvented by the legislators and a BBR which can be overridden by a super-majority of legislators.⁵

Imposing a strict BBR leads to a gradual reduction in the level of government debt. In the calibrated model, the long run reduction in the debt/GDP ratio is 89%. This is surprising because the BBR only restricts legislators not to run deficits and thus one might have expected the debt level to remain constant. The reduction occurs because a BBR, by restricting future policies, increases the expected cost of taxation and makes public savings more valuable as a buffer against future shocks. The reduction in debt means that the interest costs of servicing debt will be lower, reducing pressure on the budget. In the calibrated model, average tax rates become lower and public good provision becomes higher than in the steady state of the unconstrained equilibrium. Pork-barrel spending also becomes higher as debt falls. However, the inability to use debt to smooth taxes, leads to more volatile tax rates and less responsive public good provision.

The impact of imposing a strict BBR on citizen welfare is complex. Initially, citizens experience a reduction in average contemporaneous utility, as legislators reduce public spending and increase taxes to pay down debt. As debt declines, in principle they may or may not be better off. This depends on whether the benefits of a lower debt burden are offset by the costs of more volatile tax rates and less responsive public good provision. In the calibrated model, steady state welfare

³ This is the first calibration of the BC model to a real economy.

⁴ This is consistent with the balanced budget amendments that have been considered by Congress. As reported in Whalen (1995), the balanced budget amendment considered as part of the *Contract with America* in 1994 required that “total outlays for any fiscal year do not exceed total receipts for that year”. Total receipts are defined as “all receipts of the United States except those derived from borrowing” and total outlays are defined as “all outlays of the United States except those for the repayment of debt principle”.

⁵ The amendments considered by the U.S. Congress typically allow the BBR to be waived with support from at least 60% of legislators in both the House and Senate.

is actually increased by 2.85%. However, when account is taken of the short run costs, imposing a strict BBR reduces welfare.

The analysis of a BBR which can be overridden is much more straightforward: imposing a BBR with a super-majority override will have no effect on fiscal policy or citizen welfare. Such a BBR will only have an effect if imposed at the foundation of the state before debt has risen to equilibrium levels. Intuitively, this is because in the BC model, once debt has reached equilibrium levels, additional debt will be issued only when it is in the interests of *all* legislators to do so, rather than just a minimum winning coalition. We argue that this result reflects the stationarity of the BC model and would not necessarily apply in a growing economy.

The organization of the remainder of the paper is as follows. Section 2 provides a quick review of the debate concerning the desirability of a balanced budget amendment and the academic literature on BBRs. Section 3 briefly outlines the BC model of fiscal policy. Section 4 explains how we calibrate the model to the U.S. economy and discusses its suitability as a framework to underpin the policy analysis. Section 5 studies, qualitatively and quantitatively, the impact of imposing a strict BBR on equilibrium fiscal policies and welfare. Section 6 deals with the case of a BBR with super-majority override. Section 7 discusses the results and Section 8 concludes.

2 Literature review

Advocates of a balanced budget amendment to the U.S. constitution see a BBR as a necessary tool to limit the size of government and the level of public debt.⁶ Opponents argue that a BBR would restrict government's ability to use debt for beneficial purposes like tax smoothing, counter-cyclical Keynesian fiscal policy, or public investment. Even if legislators tend to accumulate inefficiently high debt levels, this does not mean that they will not use debt *on the margin* in ways that enhance social welfare. Advocates respond that some flexibility may be preserved by allowing the BBR to be overridden in times of war or with a supermajority vote of the legislature. Moreover, investment expenditures might be exempted by the creation of separate capital budgets.⁷

A further common argument against a balanced budget amendment is that the BBR will be circumvented by bookkeeping gimmicks and hence will be ineffective. Such gimmicks include the

⁶ Economists who have advocated a balanced budget amendment include Nobel Laureates James Buchanan and Milton Friedman, and former chairman of President Reagan's Council of Economic Advisors William Niskanen. For a useful introduction to the policy debate see Sabato (2007) pp. 54-69.

⁷ On separating capital and operating budgets see Bassetto with Sargent (2006).

establishment of entities, such as public authorities or corporations, that are authorized to borrow money but whose debt is not an obligation of the state. Another gimmick involves selling public assets and recording the proceeds as current revenue. Moreover, critics argue that this process of circumvention will create a lack of transparency and accountability. Relatedly, critics fear that a BBR might lead Congress to further their social objectives by inefficient non-budgetary measures. For example, by imposing mandates on state and local governments or by imposing additional regulations on the private sector. Finally, critics worry whether the enforcement of a BBR will blur the line between the legislative and judicial branches of government.⁸

The academic literature that relates to the desirability of a balanced budget amendment has largely been devoted to the empirical question of whether the BBRs that are used in practice actually have any effect. Thus, the literature has honed in on the issue of the circumvention of BBRs via accounting gimmicks and the like. Empirical investigation is facilitated by the fact that BBRs are common at the state level in the U.S.. Moreover, not only is there significant variation in the stringency of the different rules, but this variation is plausibly exogenous since many of the states adopted their BBRs as part of their founding constitutions.⁹ Researchers have explored how this stringency impacts fiscal policy (see, for example, Alt and Lowry (1994), Bayoumi and Eichengreen (1995), Bohn and Inman (1996), Poterba (1994) and Rose (2006)). Importantly, these studies find that stringency does matter for fiscal policy. For example, Poterba (1994) shows that states with more stringent restraints were quicker to reduce spending and/or raise taxes in response to negative revenue shocks than those without.¹⁰

Less work has been devoted to the basic theoretical question of whether, assuming that they can be enforced and will not be circumvented, BBRs are desirable. In the optimal fiscal policy literature, a number of authors point out that optimal policy will typically violate a BBR (see, for example, Lucas and Stokey (1983) and Chari, Christiano and Kehoe (1994)). In the context of the model developed by Chari, Christiano and Kehoe (1994), Stockman (2001) studies how a benevolent government would set fiscal policy under a BBR and quantifies the welfare cost of

⁸ On enforcement issues see Primo (2007).

⁹ Forty nine of the fifty U.S. states have some type of BBR (Vermont is the exception). Rhode Island was the first state to adopt a BBR in 1842 and thirty six more states adopted them before the end of the nineteenth century. See Savage (1988) for more on the history of BBRs and the importance of the balanced budget philosophy in American politics more generally.

¹⁰ For overviews of this research see Inman (1996) and Poterba (1996).

such a restraint. However, by omitting political economy considerations, none of this work allows for the possibility that a BBR might have benefits. Brennan and Buchanan (1980), Buchanan (1995), Buchanan and Wagner (1977), Keech (1985) and Niskanen (1992) provide some interesting discussion of the political economy reasons for a BBR, but do not provide frameworks in which to evaluate the costs and benefits. Besley and Smart (2007) provide an interesting welfare analysis of BBRs and other fiscal restraints within the context of a two period political agency model. The key issue in their analysis is how having a BBR influences the flow of information to citizens concerning the characteristics of their policy-makers. This is a novel angle on the problem to be sure, but this argument has not, to this point, played a role in the policy debate.

In a precursor to this analysis, Battaglini and Coate (2008) briefly consider the desirability of imposing a constitutional constraint at the foundation of the state that prevents government from *either* running deficits *or* surpluses. They present a condition under which citizens will be better off with such a constraint. This condition concerns the size of the economy's tax base relative to the size of the public spending needs. The analysis in this paper goes beyond this initial exploration in four important ways. First, it considers a BBR that allows for budget surpluses and hence public saving or debt reduction. Second, it assumes that the BBR is imposed after debt has reached equilibrium levels rather than at the beginning of time. Third, it calibrates the model to the U.S. economy and develops quantitative predictions concerning the impact of a BBR. Fourth, it considers a BBR with a super-majority override.

3 The BC model

3.1 The economic environment

A continuum of infinitely-lived citizens live in n identical districts indexed by $i = 1, \dots, n$. The size of the population in each district is normalized to be one. There is a single (nonstorable) consumption good, denoted by z , that is produced using a single factor, labor, denoted by l , with the linear technology $z = wl$. There is also a public good, denoted by g , that can be produced from the consumption good according to the linear technology $g = z/p$.

Citizens consume the consumption good, benefit from the public good, and supply labor. Each citizen's per period utility function is

$$z + A \ln g - \frac{l^{(1+1/\varepsilon)}}{\varepsilon + 1}, \tag{1}$$

where $\varepsilon > 0$. The parameter A measures the value of the public good to the citizens. Citizens discount future per period utilities at rate δ .

The value of the public good varies across periods in a random way, reflecting shocks to the society such as wars and natural disasters. Specifically, in each period, A is the realization of a random variable with range $[\underline{A}, \overline{A}]$ and cumulative distribution function $G(A)$. The function G is continuously differentiable and its associated density is bounded uniformly below by some positive constant $\xi > 0$, so that for any pair of realizations such that $A < A'$, the difference $G(A') - G(A)$ is at least as big as $\xi(A' - A)$.

There is a competitive labor market and competitive production of the public good. Thus, the wage rate is equal to w and the price of the public good is p . There is also a market in risk-free, one period bonds. The assumption of a constant marginal utility of consumption implies that the equilibrium interest rate on these bonds must be $\rho = 1/\delta - 1$.

3.2 Government policies

The public good is provided by the government. The government can raise revenue by levying a proportional tax on labor income. It can also borrow and lend by selling and buying bonds. Revenues can also be diverted to finance targeted district-specific monetary transfers which are interpreted as (non-distortionary) pork-barrel spending.

Government policy in any period is described by an $n + 3$ -tuple $\{\tau, g, b', s_1, \dots, s_n\}$, where τ is the income tax rate; g is the amount of public good provided; b' is the amount of bonds sold; and s_i is the transfer to district i 's residents. When b' is negative, the government is buying bonds. In each period, the government must also repay the bonds that it sold in the previous period which are denoted by b . The government's initial debt level in period 1 is b_0 .

In a period in which government policy is $\{\tau, g, b', s_1, \dots, s_n\}$, each citizen will supply $l^*(\tau) = (\varepsilon w(1 - \tau))^\varepsilon$ units of labor. A citizen in district i who simply consumes his net of tax earnings and his transfer will obtain a per period utility of $u(\tau, g; A) + s_i$, where

$$u(\tau, g; A) = \frac{\varepsilon^\varepsilon (w(1 - \tau))^{\varepsilon+1}}{\varepsilon + 1} + A \ln g. \quad (2)$$

Since citizens are indifferent as to their allocation of consumption across time, their lifetime expected utility will equal the value of their initial bond holdings plus the payoff they would obtain if they simply consumed their net earnings and transfers in each period.

Government policies must satisfy three feasibility constraints.¹¹ First, tax revenues must be sufficient to cover public expenditures. To see what this implies, consider a period in which the initial level of government debt is b and the policy choice is $\{\tau, g, b', s_1, \dots, s_n\}$. Expenditure on public goods and debt repayment is $pg + (1 + \rho)b$, tax revenue is $R(\tau) = n\tau w l^*(\tau)$, and revenue from bond sales is b' . Letting the *net of transfer surplus* be denoted by

$$B(\tau, g, b'; b) = R(\tau) - pg + b' - (1 + \rho)b, \quad (3)$$

the constraint requires that $B(\tau, g, b'; b) \geq \sum_i s_i$. Second, district-specific transfers must be non-negative (i.e., $s_i \geq 0$ for all i). Third, the government cannot borrow more than it can repay which requires that b' is less than $\bar{b} = \max_{\tau} R(\tau)/\rho$.

3.3 The political process

Government policy decisions are made by a legislature consisting of representatives from each of the n districts. One citizen from each district is selected to be that district's representative. Since all citizens have the same policy preferences, the identity of the representative is immaterial and hence the selection process can be ignored. The legislature meets at the beginning of each period. These meetings take only an insignificant amount of time, and representatives undertake private sector work in the rest of the period just like everybody else. The affirmative votes of $q < n$ representatives are required to enact any legislation.

To describe how legislative decision-making works, suppose the legislature is meeting at the beginning of a period in which the current level of public debt is b and the value of the public good is A . One of the legislators is randomly selected to make the first proposal, with each representative having an equal chance of being recognized. A proposal is a policy $\{\tau, g, b', s_1, \dots, s_n\}$ that satisfies the feasibility constraints. If the first proposal is accepted by q legislators, then it is implemented and the legislature adjourns until the beginning of the next period. At that time, the legislature meets again with the difference being that the initial level of public debt is b' and there is a new realization of A . If, on the other hand, the first proposal is not accepted, another legislator is chosen to make a proposal. There are $T \geq 2$ such proposal rounds, each of which takes a negligible

¹¹ There is also an additional constraint that the total amount of private sector income be larger than the amount borrowed by the government. This requires that $\sum_i s_i + (1 + \rho)b + n(1 - r)w(\varepsilon w(1 - r))^\varepsilon$ exceed b' . Using the budget balance condition for the government, this constraint amounts to the requirement that national income $nw(\varepsilon w(1 - r))^\varepsilon$ exceed public good spending pg . This condition is easily satisfied in the calibration of the model for the U.S. economy presented in Section 4. Thus, in the theoretical analysis, we will assume it is always satisfied.

amount of time. If the process continues until proposal round T , and the proposal made at that stage is rejected, then a legislator is appointed to choose a default policy. The only restrictions on the choice of a default policy are that it be feasible and that it treats districts uniformly (i.e., $s_i = s_j$ for all i, j).

3.4 Political equilibrium

Battaglini and Coate study the symmetric Markov-perfect equilibrium of this model. In this type of equilibrium, any representative selected to propose at round $r \in \{1, \dots, T\}$ of the meeting at some time t makes the same proposal and this depends only on the current level of public debt (b), the value of the public good (A), and the bargaining round (r). Legislators are assumed to vote for a proposal if they prefer it (weakly) to continuing on to the next proposal round. It is assumed, without loss of generality, that at each round r proposals are immediately accepted by at least q legislators, so that on the equilibrium path, no meeting lasts more than one proposal round. Accordingly, the policies that are actually implemented in equilibrium are those proposed in the first round.

3.4.1 Characterization of equilibrium

To understand equilibrium behavior note that to get support for his proposal, the proposer must obtain the votes of $q - 1$ other representatives. Accordingly, given that utility is transferable, he is effectively making decisions to maximize the utility of q legislators. It is therefore *as if* a randomly chosen minimum winning coalition (mwc) of q representatives is selected in each period and this coalition chooses a policy choice to maximize its aggregate utility.

In any given state (b, A) , there are two possibilities: either the mwc will provide pork to the districts of its members or it will not. Providing pork requires reducing public good spending or increasing taxation in the present or the future (if financed by issuing additional debt). When b and/or A are sufficiently high, the marginal benefit of spending on the public good and the marginal cost of increasing taxation may be too high to make this attractive. In this case, the mwc will not provide pork and the outcome will be *as if* it is maximizing the utility of the legislature as a whole.

If the mwc does provide pork, it will choose a tax rate-public good-public debt triple that maximizes coalition aggregate utility under the assumption that they share the net of transfer

surplus. Thus, (τ, g, b') solves the problem:

$$\begin{aligned} \max u(\tau, g; A) + \frac{B(\tau, g, b'; b)}{q} + \delta E v(b', A') \\ \text{s.t. } b' \leq \bar{b}, \end{aligned} \quad (4)$$

where v is the continuation value function. The optimal policy is $(\tau^*, g^*(A), b^*)$ where the tax rate τ^* satisfies the condition that

$$\frac{1}{q} = \frac{\left[\frac{1-\tau^*}{1-\tau^*(1+\varepsilon)} \right]}{n}, \quad (5)$$

the public good level $g^*(A)$ satisfies the condition that

$$\frac{A}{g^*(A)} = \frac{p}{q}, \quad (6)$$

and the public debt level b^* satisfies

$$b^* = \arg \max \left\{ \frac{b'}{q} + \delta E v(b', A') : b' \leq \bar{b} \right\}. \quad (7)$$

To interpret condition (5) note that $(1-\tau)/(1-\tau(1+\varepsilon))$ measures the marginal cost of taxation - the social cost of raising an additional unit of revenue via a tax increase. It exceeds unity whenever the tax rate (τ) is positive, because taxation is distortionary. Condition (5) therefore says that the benefit of raising taxes in terms of increasing the per-coalition member transfer ($1/q$) must equal the per-capita cost of the increase in the tax rate. Condition (6) says that the per-capita benefit of increasing the public good must equal the per-coalition member reduction in transfers it necessitates. Condition (7) says that the level of borrowing must optimally balance the benefits of increasing the per-coalition member transfer with the expected future costs of higher debt next period. We will discuss this condition further below.

The mwc will choose pork if the net of transfer surplus at this optimal policy $B(\tau^*, g^*(A), b^*; b)$ is positive. Otherwise the coalition will provide no pork and its policy choice will maximize aggregate legislator (and hence citizen) utility. Conveniently, the equilibrium policies turn out to solve a constrained planning problem:

Proposition 1. *The equilibrium value function $v(b, A)$ solves the functional equation*

$$v(b, A) = \max_{(\tau, g, b')} \left\{ \begin{array}{l} u(\tau, g; A) + \frac{B(\tau, g, b'; b)}{n} + \delta E v(b', A') : \\ B(\tau, g, b'; b) \geq 0, \tau \geq \tau^*, g \leq g^*(A), \& b' \in [b^*, \bar{b}] \end{array} \right\} \quad (8)$$

and the equilibrium policies $\{\tau(b, A), g(b, A), b'(b, A)\}$ are the optimal policy functions for this program.

The objective function in problem (8) is average citizen utility. A social planner would therefore maximize this objective function without the constraints on the tax rate, public good level and debt. Thus, political determination simply amounts to imposing three additional constraints on the planning problem. The only complication is that the lower bound on debt b^* itself depends upon the value function via equation (7) and hence is endogenous.

Given Proposition 1, it is straightforward to characterize the equilibrium policies. Define the function $A^*(b, b')$ from the equation $B(\tau^*, g^*(A), b'; b) = 0$. Then, if the state (b, A) is such that A is less than $A^*(b, b^*)$ the tax-public good-debt triple is $(\tau^*, g^*(A), b^*)$ and the mwc shares the net of transfer surplus $B(\tau^*, g^*(A), b^*; b)$. If A exceeds $A^*(b, b^*)$ the budget constraint binds and no transfers are given. The tax-debt pair exceeds (τ^*, b^*) and the level of public good is less than $g^*(A)$. The solution in this case can be characterized by obtaining the first order conditions for problem (8) with only the budget constraint binding. The tax rate and debt level are increasing in b and A , while the public good level is increasing in A and decreasing in b .

The characterization in Proposition 1 takes as fixed the lower bound on debt b^* but as we have stressed this is endogenous. Taking the first order condition for problem (7) and assuming an interior solution, we see that b^* satisfies

$$\frac{1}{q} = -\delta E\left[\frac{\partial v(b^*, A')}{\partial b'}\right]. \quad (9)$$

This tells us that the marginal benefit of extra borrowing in terms of increasing the per-coalition member transfer must equal the per-capita expected marginal cost of debt. Using Proposition 1 and the Envelope Theorem, it can be shown that:

$$-\delta E\left[\frac{\partial v(b^*, A)}{\partial b'}\right] = [G(A^*(b^*, b^*)) + \int_{A^*(b^*, b^*)}^{\bar{A}} \left(\frac{1 - \tau(b^*, A)}{1 - \tau(b^*, A)(1 + \varepsilon)}\right) dG(A)]/n. \quad (10)$$

The intuition is this: in the event that A is less than $A^*(b^*, b^*)$ in the next period, increasing debt will reduce pork by an equal amount since that is the marginal use of resources. This has a per-capita cost of $1/n$. By contrast, in the event that A exceeds $A^*(b^*, b^*)$, there is no pork, so reducing debt means increasing taxes. This has a per-capita cost of $(1 - \tau)/[n(1 - \tau(1 + \varepsilon))]$ when the tax rate is τ .

Substituting (10) into (9), observe that since $1/q > 1/n$, for (9) to be satisfied, $A^*(b^*, b^*)$ must

lie strictly between \underline{A} and \bar{A} . Intuitively, this means that the debt level b^* must be such that next period's mwc will provide pork with a probability strictly between zero and one.

3.4.2 Equilibrium dynamics

The long run behavior of fiscal policies in the political equilibrium is summarized in the following proposition:

Proposition 2. *The equilibrium debt distribution converges to a unique, non-degenerate invariant distribution whose support is a subset of $[b^*, \bar{b})$. When the debt level is b^* , the tax rate is τ^* , the public good level is $g^*(A)$, and a minimum winning coalition of districts receive pork. When the debt level exceeds b^* , the tax rate exceeds τ^* , the public good level is less than $g^*(A)$, and no districts receive pork.*

In the long run, equilibrium fiscal policies fluctuate in response to shocks in the value of the public good. Legislative policy-making oscillates between periods of pork-barrel spending and periods of fiscal responsibility. Periods of pork are brought to an end by high realizations in the value of the public good. These trigger an increase in debt and taxes to finance higher public good spending and a cessation of pork. Once in the regime of fiscal responsibility, further high realizations of A trigger further increases in debt and higher taxes. Pork returns only after a suitable sequence of low realizations of A . The larger the amount of debt that has been built up, the greater the expected time before pork re-emerges.

Figure 1 illustrates the dynamic evolution of debt under the assumption that there are just two public good shocks, high and low, denoted A_H and A_L . The horizontal axis measures the initial debt level b and the vertical the new level b' . The dashed line is the 45° line. The Figure depicts the two policy functions $b'(b, A_H)$ and $b'(b, A_L)$. In the first period, given the initial debt level b_0 , debt jumps up to b^* irrespective of the value of the shock. In the second period, debt remains at b^* if the shock is low, but increases if the shock is high. It continues to increase for as long as the shock is high. When the shock becomes low, debt starts to decrease, eventually returning to b^* after a sufficiently long sequence of low shocks.

The debt level b^* plays a key role in equilibrating the system. If it is positive, the economy is in perpetual debt, with the extent of debt spiking up after a sequence of high values of the public good. When it is negative, the government will have positive asset holdings at least some of the time. The key determinant of b^* is the size of the tax base as measured by $R(\tau^*)$ relative to the

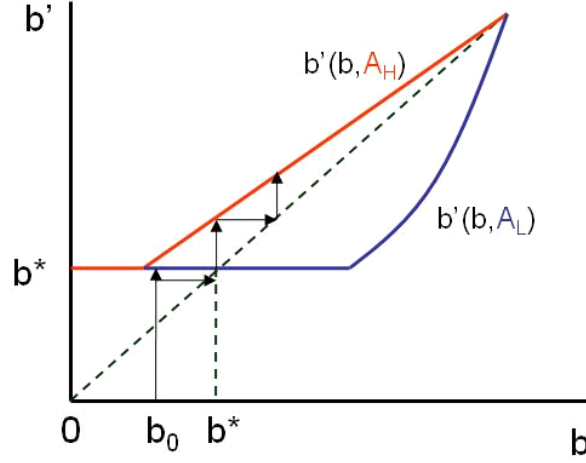


Figure 1: Evolution of debt

economy's desired public good spending as measured by $pg^*(A)$. The greater the relative size of the tax base, the larger is the debt level chosen when the mwc engages in pork-barrel spending. In what follows we will assume that b^* is positive which is the empirically relevant case for the U.S. economy.

It is instructive to compare the equilibrium behavior with the planning solution for this economy. The latter is obtained by solving problem (8) without the lower bound constraints on taxes and debt, and the upper bound constraint on public goods. The solution involves the government gradually accumulating sufficient bonds so as to always be able to finance the Samuelson level of the public good solely from the interest earnings. Thus, in the long run, the tax rate is equal to zero. In each period, excess interest earnings are rebated back to citizens via a uniform transfer.

4 Calibration to the U.S.

This section describes how to compute the political equilibrium of the BC model and how we calibrate it to the U.S. economy. It then discusses the fit of the model and performs some simulations to see how well the model captures the behavior of the key fiscal policy variables. Some limitations of the model are also discussed.

4.1 Numerical implementation and computation

The “state-space” of the BC model is the set of (b, A) pairs such that $b \leq \bar{b}$ and $A \in [\underline{A}, \bar{A}]$. We discretize this state-space by assuming that the preference shock A belongs to a finite set $\mathcal{A} = \{A_1, \dots, A_I\}$ and requiring that the debt level b belongs to the finite set $\mathcal{B} = \{b_1, \dots, b_u\}$. We assume that the lowest debt level b_1 is equal to the level that a planner would choose in the long run; that is, $b_1 = -pg_S(A_I)/\rho$ where $g_S(A_I)$ is the Samuelson level of the public good associated with the maximal shock A_I . We will discuss how the maximum debt level b_u is chosen below.

The characterization in Proposition 1 suggests a simple algorithm to compute the laissez-faire equilibrium. Given a value of b^* , (8) is a functional equation that can be solved for the equilibrium value function $v(b, A)$. The equation has a unique solution since the mapping defined by the maximization on the right hand side of (8) is a contraction. The only difficulty is that the lower bound b^* is endogenously determined along with the value function. However, this difficulty can be overcome by exploiting the fact that b^* solves the maximization problem described in (7).

These observations motivate the following computational procedure:

- **Step 1.** Choose some $z \in \mathcal{B}$ as a value for b^* and obtain the values τ^* and $g^*(A)$ from equations (5) and (6) respectively.
- **Step 2.** Solve for v_z by iterating on the value function below

$$v_z(b, A) = \max_{(\tau, g, b')} \left\{ \begin{array}{l} u(\tau, g) + A \ln g + \frac{B(\tau, g, b'; b)}{n} + \delta E v_z(b', A') \\ B(\tau, g, b'; b) \geq 0, g \leq g^*(A), \tau \geq \tau^*, \& b' \in [z, b_u]. \end{array} \right\}$$

- **Step 3.** Calculate

$$\arg \max \{b'/q + \delta E v_z(b', A') : b' \in \mathcal{B}\}.$$

- **Step 4.** If the optimal value calculated in Step 3 is not z , select another $z \in \mathcal{B}$ as a value for b^* and repeat the procedure. If the optimal value is z , then z is the estimate of b^* and v_z is the estimated equilibrium value function.¹² The equilibrium policy functions can then be obtained by solving the constrained planning problem described in Step 2.

¹² In fact, once we obtain an approximated value for b^* , we refine the search by allowing the threshold z to be a real number and use a bisection method to obtain a more accurate approximation (interpolating the expected value function using Chebyshev polynomials).

Effectively, our computational procedure searches for a b^* that is a fixed point of the above system. Intuitively, we are searching for the value of b^* that determines a value function for which the mwc would actually choose to borrow b^* when providing pork to its members.

In our numerical implementation, we use a 200-point grid \mathcal{A} for the preference shocks. We choose the grid \mathcal{B} for debt so that further increases in the number of points neither change the lower bound b^* nor the value of the key statistics we attempted to match (more detail on this when discussing the calibration). The resulting set \mathcal{B} has 4000 non-evenly spaced grid points, which are more concentrated at values of debt greater than zero. A global approximation method is used in the computation of the equilibrium.

4.2 Calibration

We normalize the number of districts to $n = 100$. Consistent with Cooley and Prescott (1995), we set the discount factor δ equal to 0.95. This implies that the annual interest rate on bonds ρ is 5.26%. Following Aiyagari et. al. (2002) and consistent with the measure used in Greenwood, Hercowitz and Huffman (1988) for a similar disutility of labor function, we assume the elasticity of labor supply ε is equal to 2. The wage rate w is normalized so that the value of GDP when the tax rate is τ^* is 100. This implies a value of w equal to 0.72. Finally, the relative price of public to private goods p is set equal to 1.

In terms of the shock structure, we assume that in any period, the economy can be in one of two regimes: “peace” or “war”. In peace, A is log-normally distributed with mean μ and variance θ^2 , so that $\log(A) \sim N(\mu, \theta^2)$. In war, $\log(A)$ is equal to $\mu_w > \mu$ implying that the demand for public good provision (i.e., defense) is higher. The assumption that there is no volatility in A during wartime is just made for simplicity. We further assume that the economy is in peace 95.5% of the time and in war 4.5% of the time. This is because there were three years during our 66 year sample (the WWII years 1942-45) in which government spending was particularly large. In peacetime, the shocks are discretized using Tauchen’s method.

We calibrate five parameters in all: the three parameters of the shock distribution μ , μ_w , and θ ; the required number of votes needed for a proposal to be approved by the legislature q ; and the upper bound on debt b_u . While it may seem natural to set q equal to 51%, in the U.S. context super-majority approval of budgets will typically be necessary to overcome the threats of presidential vetoes or Senate filibusters. Rather than trying to guess an appropriate value

based on institutional considerations, we decided to infer q from the data. We choose to calibrate b_u because setting it equal to the theoretical upper bound on debt $\bar{b} = \max_{\tau} R(\tau)/\rho$ creates difficulties matching all the moments. In particular, the average debt/GDP ratio predicted by the model is too high. We think that this reflects the fact that the theoretical upper bound is unrealistically high. More specifically, since repaying \bar{b} would imply setting all future public good provision equal to zero, we suspect that the government would in fact default if saddled with this amount of debt. We are not sure what is the true maximum amount the government could borrow and so, again, we try to infer it from the data.

We choose our five parameters to match five target moments in the data. The first two targets are the peacetime (i.e., excluding the WWII years) mean and variance of government spending as a proportion of GDP in the U.S. during the period 1940-2005. The third is the maximum value of government spending as a proportion of GDP. The final two are the average and maximum ratio of government debt to GDP during 1940-2005.¹³ Our five parameters are chosen so that the model generates, under the stationary distribution, close to the same values that are observed in the data. The resulting values, together with other relevant parameters, are listed in Table 1.

n	δ	ε	w	p	μ	μ_w	θ	q	b_u
100	0.95	2	0.72	1	-1.05	-0.12	0.13	55.2	91.7

Table 1: Model Parameters

4.3 Model fit

Table 2 summarizes the model’s fit for a set of selected variables that compose the government’s budget. The first column reports government spending as a percentage of GDP during peacetime (GS_p/GDP), while the second column includes the war years (GS/GDP). The third column reports the ratio of government debt to GDP (GD/GDP), while the fourth reports government revenue as a proportion of GDP (GR/GDP). In our model, the latter is simply the proportional income tax rate τ .

¹³ All the moments used in the calibration are constructed from the dataset contained in “Historical Statistics of the United States”, Millennial Edition, Cambridge University Press (2008). The series for the ratio of government spending to GDP is constructed from the Treasury series (which ranges from 1789 to 1970) and the OMB series (ranging from 1940 to 2005), and includes Total Federal Expenditures, net of interest payments (all as a fraction of GDP). The measure of Total Expenditures includes Defense, Social Security and Veteran’s Compensations (so “mandatory” expenditures will be taken into account when calibrating average spending). The series of government debt corresponds to Federal Public Debt.

The top two rows report the model's simulated means and variances, and the bottom two rows their counterparts in the data. The model's statistics are based on a numerical approximation to the theoretical invariant distribution of debt.¹⁴ The mean and standard deviation of peacetime spending as a ratio of GDP (listed in bold in the first column), as well as the mean debt/GDP ratio (listed in bold in the third column), are three of our five target values, and thus match the data well by construction.

		GS_p/GDP	GS/GDP	GD/GDP	$GR/GDP=\tau$
Model	Mean	17.37%	18.43%	56.98%	21%
	Stdev	2.33%	5.40%	18%	1%
Data	Mean	17.36%	18.18%	56.19%	17%
	Stdev	2.32%	5.49%	20%	3%

Table 2: Model Simulation vs Data

The mean government spending/GDP ratio during WWII was also one of our target moments. The model delivers 40.5% while the data counterpart is 40%. Note that the mean of government spending/GDP (second column) predicted by the model matches the data well. Since this mean is a combination of the two conditional means (peacetime and wartime), with the weights determined by the probability of war, this suggests that our approximation of the shock process is accurate.

Consistent with tax smoothing principles, we see from Table 2 that the volatility of the government debt/GDP ratio in the data is much higher than that of the government revenue/GDP ratio (20% for the former, 3% for the latter). Despite the fact that we did not directly target the debt/GDP volatility, the model generated a value quantitatively similar to that observed in the data. The predicted volatility of revenue/GDP is much lower than in the data suggesting that there is more tax smoothing going on in the model than in the actual economy. Nonetheless, the average revenue/GDP ratio generated by the model is very much in line with the data.

There are two other statistics not reported in Table 2 that are nonetheless important to mention. The first one, is the targeted maximum debt/GDP ratio. The model delivers an expected value of the maximum debt/GDP ratio of 120.6%, very close to the 121% observed in the data.

¹⁴ Using the theoretical distribution approach resulted in more robust estimates of the moments than the alternative of simulating the economy for a given length of time.

The second statistic, not a target value, is the lower bound on the debt/GDP ratio. In the data, during the period 1940-2005 this was never below 31.5%. Encouragingly, the lower bound generated by the model—calculated as $b^*/E(y)$ —is 29.4%. Thus, the political frictions captured by the model generate quantitatively a realistic and *endogenous* lower bound for debt. Moreover, the long-run stationary distribution of debt/GDP that our model generates is in line with that observed in the U.S. as seen in Figure 2.

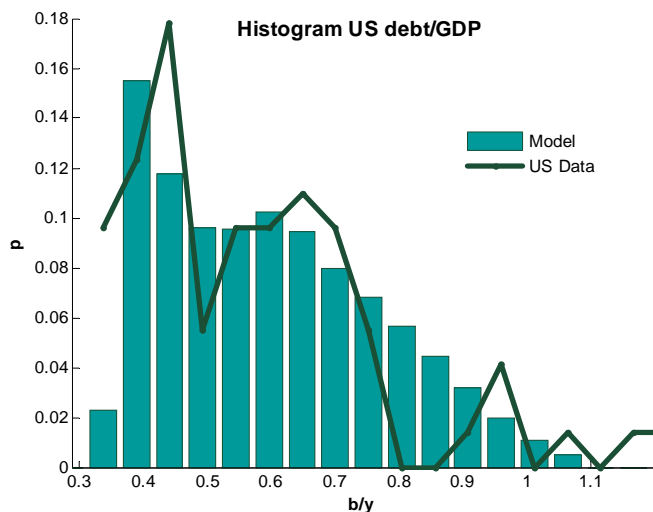


Figure 2: Stationary distribution of debt/GDP

The fact that the model delivers such a good fit with the actual distribution of the debt/GDP ratio should not be overlooked. It is very difficult to explain the observed debt distribution with a normative model. As noted earlier, the planner’s solution converges to a steady state where the government has sufficient assets to finance the Samuelson level of the public good with the interest earnings and taxes are zero. Obviously such a prediction is untenable. Aiyagari et. al (2002) showed that a non-degenerate distribution for debt could be generated by imposing an ad-hoc lower bound on debt (i.e., an upper limit on how many assets the government could hold). However, as they observe, it is not clear why the government should face such a constraint. The BC model provides a theoretical resolution of this difficulty and our calibration shows that, for the U.S., this resolution works rather nicely empirically.

4.4 Simulations

To test how well the model captures the behavior of the key policy variables, we simulated the economy for the period 1940-2005. As an initial condition, we assumed that debt/GDP in the model was identical to that in the data. We further assumed that the economy was in peace until 1942, where we hit the system with a “war” shock for three years. After that, we assume the economy remains in peace for the remainder of the sample. Given the initial value of b and the sequence of shocks, we computed the evolution of government spending, revenues, and debt.

The left hand panel of Figure 3 shows the time paths of spending and revenue as a proportion of GDP in the data. Revenues are much more stable than spending reflecting the government’s tax smoothing. The right hand side show the impulse-responses from the model. The Figure shows the model nicely replicates the tax smoothing behavior observed in the data.

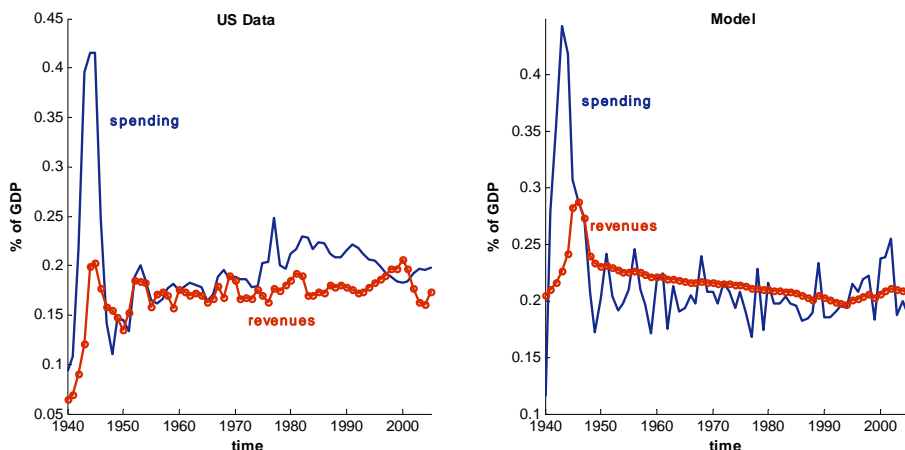


Figure 3: Response to a war shock, data (left panel) vs model (right panel)

The U.S. government financed the massive increase in public spending during the war years largely by issuing debt. The increase in the government debt/GDP ratio can be seen in Figure 4, which also depicts the behavior of debt for our simulated economy. Notice that the model captures the jump in debt very well. Another interesting thing to note is that while government spending decreased rapidly after the shock, the level of debt drops back at a much lower speed. While we capture this qualitatively, our model over-predicts debt persistence. The model also has difficulty

in explaining the up-turn in the debt/GDP ratio in the 1980s and 1990s. We suspect that there was a structural shift in the willingness to run deficits which is not picked up by the model.

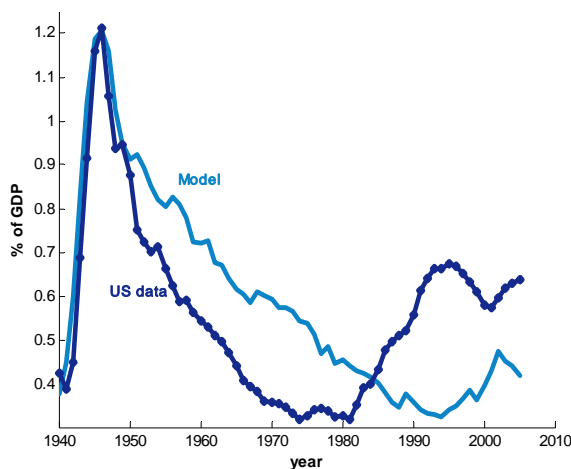


Figure 4: Response of debt to a war

4.5 Some limitations

We feel that the calibrated BC model provides a surprisingly good fit of the data given its simplicity. In particular, the fit of the debt distribution illustrated in Figure 2 is very encouraging. This provides some justification for using the model to analyze how imposing a balanced budget amendment would impact the U.S. economy. Nonetheless, the model has many limitations and we discuss three of the most important ones here.

Although dynamic, the BC model does not allow for persistent growth. Since there has been substantial growth in the U.S. economy over the period in question, to calibrate the model it is necessary to match the predictions of the model concerning policies *as a proportion of GDP* with the data on policies as a proportion of GDP. Matching policy *levels*, even when corrected for inflation, would not be possible. But this raises the question of whether the equilibrium behavior of fiscal policies that the model predicts would emerge in a growing economy. For example, would the debt/GDP ratio in a growing economy behave the same as the debt/GDP ratio in the stationary economy? This is an open question.

A second limitation concerns entitlements spending. We included Social Security and Medicare

spending in our computation of the government spending/GDP ratio. Expenditure on these programs has grown significantly since WWII and this is primarily responsible for the upward trend in the spending/GDP ratio exhibited in the left panel of Figure 3. In calibrating the model, we target the average spending/GDP ratio over the entire 1940-2005 period. Thus, our shock structure does not incorporate the increase in spending observed in the latter part of our sample period.

A third limitation concerns the assumed constant marginal utility of consumption. This assumption means that, given the interest rate ρ , citizens are indifferent over the time path of their consumption. This results in consumption being more volatile in the model than in the data.¹⁵ The assumption also implies that the interest rate is constant so that the model cannot capture variations in interest rates.¹⁶

5 The impact of a strict BBR

We are now ready to analyze the impact of imposing a strict BBR on the economy. We model a strict BBR as a requirement that tax revenues must always be sufficient to cover spending and the costs of servicing the debt. If the initial level of debt is b , this requires that

$$R(\tau) \geq pg + \sum_i s_i + \rho b. \quad (11)$$

Given the definition of $B(\tau, g, b'; b)$ (see (3)), a BBR is equivalent to adding, in each period, the feasibility constraint that $b' \leq b$; i.e., that debt cannot increase. Thus, under a BBR, next period's feasible debt levels are determined by this period's debt choice. In particular, if debt is paid down in the current period, that will tighten the debt constraint in the next period. We first study what can be said qualitatively about the impact of a BBR and then turn to the calibrated model.

5.1 Qualitative analysis

Under a BBR, the equilibrium will still have a recursive structure. Let $\{\tau_c(b, A), g_c(b, A), b'_c(b, A)\}$ denote the equilibrium policies under the constraint and $v_c(b, A)$ the value function. As in the

¹⁵ The standard deviation of consumption as a proportion of GDP is 5.4% in the model and 3.8% in the data.

¹⁶ In addition, with a diminishing marginal utility of consumption, the government will have incentives to manipulate the interest rate in its favor. Given a lack of commitment, this would cause further distortions in a political equilibrium. For a discussion of this, see Lucas and Stokey (1983) for the benevolent planner case, and Azzimonti, deFrancisco and Krusell (2007) for an analysis under majority voting.

unconstrained equilibrium, in any given state (b, A) , either the mwc will provide pork to the districts of its members or it will not. If the mwc does provide pork, it will choose a tax-public good-debt triple that maximizes coalition aggregate utility under the assumption that they share the net of transfer surplus. Thus, (τ, g, b') solves the problem:

$$\begin{aligned} \max u(\tau) + A \ln g + \frac{B(\tau, g, b'; b)}{q} + \delta E v_c(b', A') \\ \text{s.t. } b' \leq b. \end{aligned}$$

The optimal policy is $(\tau^*, g^*(A), b_c^*(b))$ where the tax rate τ^* and public good level $g^*(A)$ are as defined in (5) and (6), and the public debt level $b_c^*(b)$ satisfies

$$b_c^*(b) \in \arg \max \left\{ \frac{b'}{q} + \delta E v_c(b', A') : b' \leq b \right\}. \quad (12)$$

As in the case without a BBR, if the mwc does not provide pork, the outcome will be *as if* it is maximizing the utility of the legislature as a whole. Following the logic of Proposition 1, we obtain:

Proposition 3. *Under a strict BBR, the equilibrium value function $v_c(b, A)$ solves the functional equation*

$$v_c(b, A) = \max_{(\tau, g, b')} \left\{ \begin{array}{l} u(\tau) + A \ln g + \frac{B(\tau, g, b'; b)}{n} + \delta E v_c(b', A') : \\ B(\tau, g, b'; b) \geq 0, \tau \geq \tau^*, g \leq g^*(A), \& b' \in [b_c^*(b), b] \end{array} \right\} \quad (13)$$

and the equilibrium policies $\{\tau_c(b, A), g_c(b, A), b'_c(b, A)\}$ are the optimal policy functions for this program.

As in Proposition 1, the equilibrium can be expressed as a particular constrained planner's problem. There are two key differences created by the BBR. First, there is an additional constraint on debt - an upper bound, $b' \leq b$. Second, the endogenous lower bound on debt $b_c^*(b)$ will be a function of b . Because of these two features, the set of feasible policies is now state dependent as well as endogenous. Determining the shape of the function $b_c^*(b)$ will be crucial to the analysis of the dynamics and the steady state of the equilibrium. Before turning to this, however, note that we can use Proposition 3 to characterize the equilibrium policies for a given function $b_c^*(b)$. If A is less than $A^*(b, b_c^*(b))$ the tax-public good-debt triple is $(\tau^*, g^*(A), b_c^*(b))$ and the mwc shares the net of transfer surplus $B(\tau^*, g^*(A), b; b_c^*(b))$. If A is greater than $A^*(b, b_c^*(b))$ the budget constraint binds and no transfers are given. The tax rate exceeds τ^* , the level of public good is less than

$g^*(A)$, and the debt level exceeds $b_c^*(b)$. In this case, the solution can be characterized by solving problem (13) with only the budget constraint binding and the constraint that $b' \leq b$.

5.1.1 Characterization of the function $b_c^*(b)$

The function $b_c^*(b)$ tells us, for any given initial b , the debt level that the mwc will choose when it provides pork. To understand what $b_c^*(b)$ is, it is first useful to understand what it cannot be. Suppose that the expected value function $Ev_c(b, A')$ were strictly concave (as is the case without a BBR). Then the objective function of the maximization problem in (12) would also be strictly concave and there would be a unique \hat{b} such that $b_c^*(b) = \min\{\hat{b}, b\}$. Thus, for any b larger than \hat{b} , whenever the mwc chooses to provide pork, it would choose the debt level \hat{b} . If this were the case, however, a contradiction would emerge. To see why, note that for initial debt levels b below \hat{b} , the BBR would always be binding so that $b'_c(b, A) = b$ for all A . On the other hand, for debt levels above \hat{b} , there will be states A in which the BBR will not bind so that $b'_c(b, A) < b$. This means that when b is below \hat{b} , a marginal reduction of debt would be permanent: all future mwcs would reduce debt by the same amount. By contrast, for b above \hat{b} , a marginal reduction in debt would have an impact on the following period, but it would affect the remaining periods only in the states in which the BBR is binding. Indeed, when the BBR is not binding, $b_c^*(b)$ would equal \hat{b} , and so would be independent of b . It follows that the marginal benefit of reducing debt to the left of \hat{b} would be higher than the marginal benefit of decreasing debt to the right of \hat{b} . But this contradicts the assumption that the expected value function $Ev_c(b, A')$ is strictly concave.

The essential problem with a $b_c^*(b)$ function of the form $\min\{\hat{b}, b\}$ is that the marginal effect of b on $b_c^*(b)$ changes too abruptly at \hat{b} , from one to zero. In equilibrium, the debt level the mwc chooses when it provides pork and the BBR is not binding must change more smoothly. This is not possible when the expected value function is strictly concave, because the maximization problem in (12) has a unique solution which allows no flexibility in choosing $b_c^*(b)$. If the equilibrium expected value function is concave, therefore, it must be weakly concave. Weak concavity does not pose the same problem since it allows for the possibility that there are a range of debt levels that solve the maximization problem in (12). Suppose this is the case and let b_0 denote the smallest of these and b_1 the largest; that is,

$$b_0 = \min \arg \max \left\{ \frac{b'}{q} + \delta Ev_c(b', A') \right\}, \quad (14)$$

and

$$b_1 = \max \arg \max \left\{ \frac{b'}{q} + \delta Ev_c(b', A') \right\}. \quad (15)$$

Then any point in $[b_0, b_1]$ will solve the maximization problem in (12). If the initial debt level b is smaller than b_0 , then we must have $b_c^*(b) = b$. But if the initial debt level b exceeds b_0 then the associated $b_c^*(b)$ could be any point in the interval $[b_0, \min\{b, b_1\}]$. This extra flexibility suggests that there may exist a function $b_c^*(b)$ which guarantees that the expected value function is indeed weakly concave. Fortunately, this is not only the case, but there exists a unique such function.

To make all this more precise, define an equilibrium under a strict BBR to be *well-behaved* if (i) the expected value function is concave and differentiable everywhere, and (ii) the function $b_c^*(b)$ is non-decreasing and differentiable everywhere. In addition, let $(\tau_b(A), g_b(A))$ be the tax rate and public good level that solve the static maximization problem

$$\max_{(\tau, g)} \left\{ u(\tau) + A \ln g + \frac{B(\tau, g, b, b)}{n} : B(\tau, g, b, b) \geq 0 \right\}. \quad (16)$$

Then we have:

Proposition 4. *There exists a unique well-behaved equilibrium under a strict BBR. The associated function $b_c^*(b)$ is given by:*

$$b_c^*(b) = \begin{cases} b_0 & \text{if } b \leq b_0 \\ f(b) & \text{if } b \in (b_0, b_1) \\ f(b_1) & \text{if } b \geq b_1 \end{cases}, \quad (17)$$

where the point b_0 solves the equation

$$G(A^*(b_0, b_0)) + \int_{A^*(b_0, b_0)}^{\bar{A}} \left(\frac{1 - \tau_{b_0}(A)}{1 - \tau_{b_0}(A)(1 + \varepsilon)} \right) dG(A) = \frac{n}{q}, \quad (18)$$

the function $f(b)$ solves the differential equation

$$\begin{aligned} \frac{n}{q} &= G(A^*(b, f(b))) \left[1 - \frac{df(b)}{db} \delta \left(1 - \frac{n}{q} \right) \right] \\ &+ \left(\frac{n}{q} \right) (1 - \delta) G(A^*(b, b)) - \left(\frac{n}{q} \right) G(A^*(b, f(b))) + \int_{A^*(b, b)}^{\bar{A}} \left(\frac{1 - \tau_b(A)}{1 - \tau_b(A)(1 + \varepsilon)} \right) dG(A) (1 - \delta) + \delta \frac{n}{q} \end{aligned} \quad (19)$$

with initial condition $f(b_0) = b_0$, and the point b_1 solves the equation

$$\frac{n}{q} (1 - \delta) = \frac{n}{q} (1 - \delta) G(A^*(b_1, b_1)) - \left(\frac{n}{q} - 1 \right) G(A^*(b_1, f(b_1))) + \int_{A^*(b_1, b_1)}^{\bar{A}} \left(\frac{1 - \tau_{b_1}(A)}{1 - \tau_{b_1}(A)(1 + \varepsilon)} \right) dG(A) (1 - \delta). \quad (20)$$

Proof: See Appendix.

The function $b_c^*(b)$ is tied down by the requirement that the objective function in the maximization problem (12) must be constant on the interval $[b_0, b_1]$. In a well-behaved equilibrium, this implies that $-\delta E \partial v_c(b', A') / \partial b' = 1/q$. Since the derivative of the expected value function depends upon the function $b_c^*(b)$ and its derivative, this implies that $b_c^*(b)$ satisfies a differential equation with appropriate end-point conditions. This differential equation and its end-points are spelled out in Proposition 4 and derived in its proof.

Figure 5 illustrates the equilibrium function $b_c^*(b)$. The figure highlights two key properties of this function that will govern the dynamic behavior of the equilibrium. The first property is that b_0 is strictly less than the level of debt that is chosen by the mwc when it provides pork in the unconstrained case (i.e., b^*). This is immediate from a comparison of (10) and (18). The second is that for any initial debt level b larger than b_0 , $b_c^*(b)$ is less than b . This follows from the facts that $b_c^*(b_0) = b_0$ and $db_c^*(b)/db$ is less than 1 for b larger than b_0 .

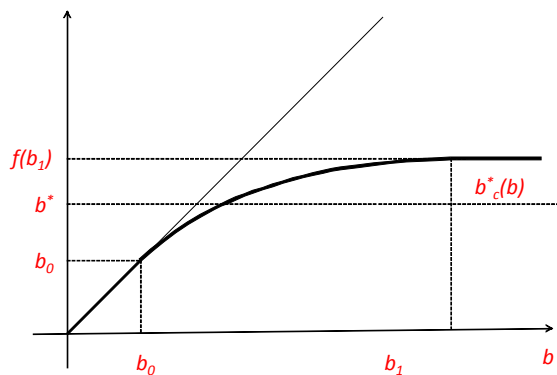


Figure 5: The lower bound $b_c^*(b)$.

5.1.2 Dynamics and steady state

We now turn to the dynamics. Since in the unconstrained equilibrium, debt must lie in the interval $[b^*, \bar{b})$, we assume that when the BBR is imposed the initial debt level is in this range. We now have:

Proposition 5. *Suppose that a strict BBR is imposed on the economy when the debt level is in the range $[b^*, \bar{b})$. Then, in a well-behaved equilibrium, debt will converge monotonically to a steady*

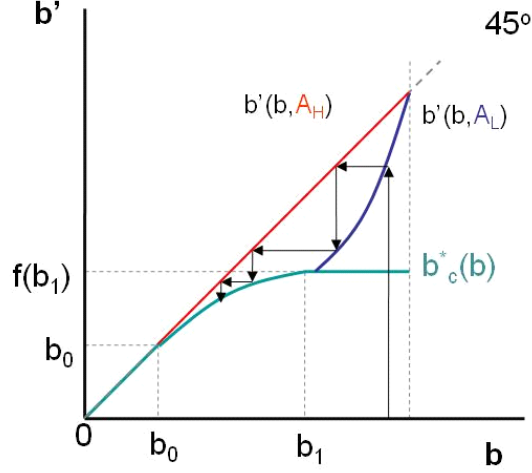


Figure 6: Evolution of debt under a BBR

state level b_0 smaller than b^* . At this steady state level b_0 , when the value of the public good is less than $A^*(b_0, b_0)$, the tax rate will be τ^* , the public good level will be $g^*(A)$, and a mvc of districts will receive pork. When the value of the public good is greater than $A^*(b_0, b_0)$, the tax rate will be $\tau_{b_0}(A)$, the public good level will be $g_{b_0}(A)$, and no districts will receive pork.

Proof: See Appendix.

To understand this result, note first from Propositions 3 and 4 that $b'_c(b_0, A) = b_0$ for all A so that b_0 is a steady state. The key step is therefore to show that the equilibrium level of debt must converge down to the level b_0 . Since debt can never increase, this requires ruling out the possibility that debt gets “stuck” before it gets down to b_0 . This is done by showing that for any debt level b greater than b_0 , the probability that debt remains at b converges to zero as the number of periods goes to infinity.

Figure 6 illustrates what happens to debt in the two shock case depicted in Figure 1. The Figure depicts the two policy functions $b'_c(b, A_H)$ and $b'_c(b, A_L)$. When the shock is high, the constraint that debt cannot increase is binding and hence $b'_c(b, A_H) = b$ for all $b \geq b_0$. When the shock is low, however, the constraint is not binding and the mvc finds it optimal to pay down debt. Given an initial debt level exceeding b^* , debt remains constant as long as the shock is high. When the shock is low, debt starts to decrease. Once it has decreased, it can never go up because

of the BBR constraint. Debt converges down to the new steady state level of b_0 .

We can now use Proposition 5 to compare policies at the new steady state with long run policies in the unconstrained equilibrium.

Proposition 6. *At the steady state debt level b_0 , the average primary surplus is lower than the long run average primary surplus in the unconstrained equilibrium. In addition, the average level of pork-barrel spending is higher.*

Proof: See Appendix.

Recall that the primary surplus is the difference between tax revenues and public spending other than interest payments. Thus, the first part of this result implies that steady state average tax revenues must be lower under a BBR and/or average public spending must be higher. It should be stressed, however, that this result only refers to the long run. In the transition to the new steady state, at least initially, taxes will be higher and public good spending will be lower as revenues are used to reduce debt.

The above analysis provides a reasonably complete picture of how imposing a BBR will impact fiscal policy. However, we are also interested in the impact on citizens' welfare. When it is first imposed, it seems likely that a BBR will reduce contemporaneous utility. When A is low, instead of transfers being paid out to the citizens, debt will be being paid down. When A is high, the increase in taxes and reduction in public goods will be steeper than would be the case if the government could borrow. Thus, in either case, citizen welfare should be lower. As debt falls, the picture becomes less clear. On the one hand, citizens gain from the higher average public spending levels and/or lower taxes resulting from the smaller debt service payments. On the other hand, the government's ability to smooth tax rates and public good levels by varying the debt level is lost. Thus, there is a clear trade-off whose resolution will depend on the parameters. The welfare issue is therefore fundamentally a quantitative question and to resolve it we need to turn to the calibrated model.

5.2 Quantitative analysis

The computation of the equilibrium is much easier with a strict BBR than without because the function $b_c^*(b)$ can be directly solved for. To see this, note that the steady state value of debt b_0 can be computed directly from equation (18), since the tax function $\tau_b(A)$ can be obtained by solving the static problem (16). Given this, the function $f(b)$ can be found immediately by

solving the differential equation (19) with initial condition $f(b_0) = b_0$, and the end point b_1 can be found using equation (20).¹⁷ Once the function $b_c^*(b)$ is obtained, policy and value functions can be computed following Step 2 in the algorithm described above (with the exception that the constraint on debt is replaced by $b' \in [b_c^*(b), b]$). For the calibrated economy, we find that $b_0 = 5.9$, a significantly lower value than b^* , which was 29.4.

Table 3 compares fiscal policy variables in the steady state under a BBR with the long run equilibrium values in the unconstrained case. The most striking difference is in the government debt/GDP ratio which is reduced from 56.98% to 6.2% - a 89% decline. The steady state average government revenue/GDP ratio is lower with a BBR and the mean government spending/GDP ratio is higher. However, the variance of the government spending/GDP ratio is lower with a BBR reflecting the fact that public good provision is less responsive to preference shocks. The variance of tax rates is higher with a BBR, reflecting the intuition that taxes should be less smooth. In the unconstrained case, the economy can have both responsive public good provision and smooth taxes by varying debt. This is evidenced by the high variance of the debt/GDP ratio without a BBR. The Table also shows that the mean level of pork as a fraction of government spending is higher in the steady state under a BBR than in the long run in the unconstrained case. Notice that in both cases pork is a very small fraction of government spending, so that the difference in spending/GDP ratios across the two regimes translates into a difference in public good spending/GDP ratios.¹⁸

		GS/GDP	GD/GDP	GR/GDP= τ	Pork/GS
Without BBR	Mean	18.43%	56.98%	21%	0.015%
	Stdev	5.40%	18.00%	1%	0.375%
With BBR	Mean	19.45%	6.20%	19.78%	2.237%
	Stdev	2%	0.34%	2%	4.814%

Table 3: Long run effects of a BBR

To understand the dynamic impact of imposing a BBR, we simulated the economy by drawing a sequence of shocks consistent with our calibrated distribution of A . As an initial condition, we

¹⁷ We use a fourth-order Runge-Kutta method to solve for the differential equation.

¹⁸ The public good spending/GDP ratio is 18.43% in the unconstrained equilibrium and 19.05% with a BBR.

assumed that the government debt/GDP ratio equalled 63% which was the level prevailing in the U.S. in 2005, the last year for which we have data. It took around 70 periods for the economy to transition to a debt level below b^* (the equivalent of about a 30% debt/GDP ratio), with the convergence to the new steady state (about a 6% debt/GDP ratio) occurring at a much slower speed. Figure 7 compares the dynamics of fiscal policy with and without a BBR. As can be seen in the first panel of Figure 7, in the unconstrained case (the red dotted line) the government always issues debt in time of war: with a BBR, however, it is forced to have zero deficits. This induces a marked downward drift in the evolution of debt.

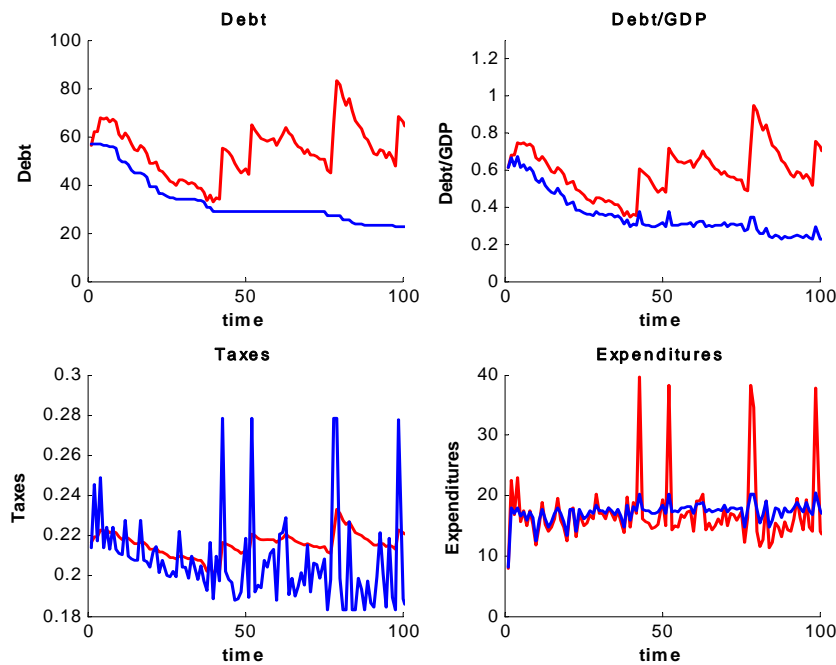


Figure 7: Evolution of key variables (- - red benchmark, - blue BBR)

The second panel of Figure 7 measures the debt/GDP ratio. Note that this measure spikes during war-time even with a BBR. The reason is that, even though debt remains constant, GDP goes down due to the increase in taxation needed to finance the war. The spike in taxes during war time under a BBR is clearly illustrated in the third panel of Figure 7 which nicely illustrates the negative consequences of a BBR for tax smoothing. On the other hand, the panel also illustrates

how a BBR serves to lower average tax rates over time. The fourth and final panel of Figure 7 illustrates that public good provision is much less responsive with a BBR. However, the average level of public good provision rises above the level of provision without a BBR as debt converges to the new steady state.

Figure 8 looks at the evolution of pork and debt under a BBR. Pork is not provided when the BBR is initially imposed but is provided with increasing frequency as debt levels decline.

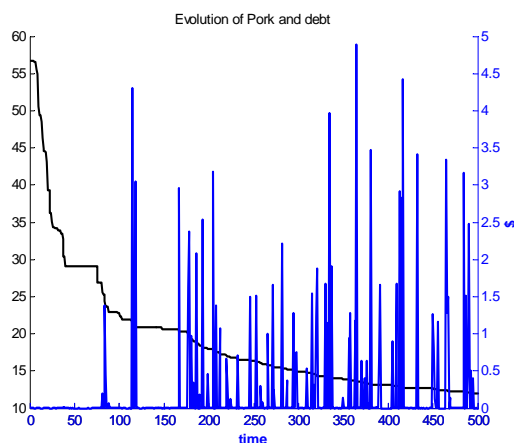


Figure 8: Pork under a BBR

Steady state welfare under a strict BBR, as measured by $Ev_c(b_0, A)$, is 2.85% higher than the corresponding long run value without a BBR.¹⁹ This welfare gain reflects the lower cost of debt service at the new steady state. However, as discussed above, the fact that steady state welfare is higher does not mean that imposing a BBR will raise welfare because of the costs incurred in the transition to the new steady state. Figure 9 illustrates the evolution of contemporaneous utility following the imposition of a BBR. In the first 40 periods, contemporaneous welfare is most of the time lower under a BBR. However, after the first war shock, debt is sufficiently lower under a BBR that contemporaneous welfare overtakes that in the unconstrained equilibrium and exceeds it thereafter even during war time.²⁰ While this is not obvious from the Figure, the short run

¹⁹ Long run welfare without a BBR is given by $\int_b Ev(b, A)d\psi(b)$ where $\psi(b)$ is the stationary distribution of debt.

²⁰ The fact that contemporaneous utility spikes up in war time is just an artifact of how we have modelled war as an increase in the value of public goods. There are obviously other utility costs of war that are not accounted for by the model.

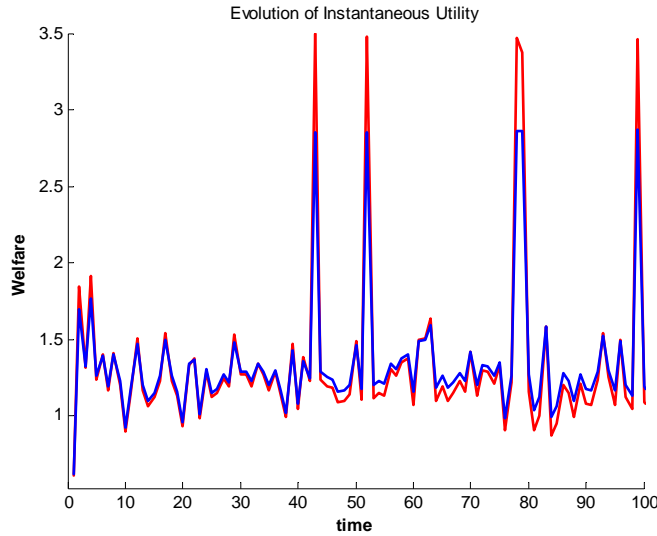


Figure 9: The evolution of welfare (- - red benchmark, – blue BBR)

costs are sufficiently high that imposing a BBR given the level of debt in the U.S. in 2005 (our last year of data) will actually reduce welfare. Moreover, this is true for any initial debt level in the support of the long run distribution in the unconstrained equilibrium.

While the question is purely academic, one can use the calibrated model to ask whether the U.S. would have been better off at its founding banning deficits, that is if a strict BBR were imposed at the beginning of time before the government had accumulated any debt. Assuming that initial debt equals zero and that b_0 (as defined in (18)) exceeds 0, under such a BBR, debt would remain at 0 forever. Thus, we can quantify the welfare gains of introducing a BBR at foundation by comparing $Ev_c(0, A)$ and $Ev(0, A)$ in the calibrated economy.²¹ We find that such a ban would have increased welfare by 0.017%.

²¹ This comparison is the one analyzed in Battaglini and Coate (2008). They prove that if $R(\tau^*)$ exceeds $pg^*(\bar{A})$, then it must be the case that $Ev_c(0, A)$ exceeds $Ev(0, A)$ and a BBR is welfare improving. To see the logic, note that the condition implies that $A^*(0, 0)$ exceeds \bar{A} and hence the tax-public good pair would always be $(\tau^*, g^*(A))$ under a BBR. But without a BBR, by Proposition 2, the tax rate would never be lower than τ^* and sometimes would be strictly higher and the public good level would never be higher than $g^*(A)$ and sometimes would be strictly lower. Thus, citizens must be better off with a BBR. This condition, however, is quite restrictive and is not satisfied in our calibrated economy.

6 Impact of a BBR with super-majority override

Now consider the impact of a BBR that can be overruled with the support of $q' > q$ legislators. Thus, if the proposer can obtain the support of q' legislators, he can pass a proposal which runs a deficit and raises the debt level. Otherwise, the rule binds. Of course, if the proposer is not planning to raise debt, then he only needs the support of q legislators to pass his proposal. We now have the following striking result.

Proposition 7. *Suppose that a BBR with super-majority override is imposed on the economy when the debt level is at least b^* . Then the rule will have no effect on fiscal policies and citizens' welfare.*

The logic underlying this result is straightforward. In the long run equilibrium of the unconstrained model, a mwc never simultaneously runs a deficit and provides pork. This follows from the fact that when a mwc provides pork it chooses the debt level b^* which is the lowest level of debt in the support of the long run distribution. Thus, whenever the mwc runs a deficit it is effectively behaving as a planner would and its proposal is therefore supported unanimously. Requiring the mwc to obtain additional support for its deficit-financed proposal therefore imposes no constraint on its behavior.

When reflecting on this result, it is important to note that if a BBR with override were imposed on the economy before debt had risen to equilibrium levels, it would have an effect. This is because it will constrain the initial surge in deficit-financed pork which increases debt to b^* and will therefore shift the debt distribution to the left. The greater the required super-majority, the larger the shift. This leftward shift in the debt distribution would likely enhance social welfare.

7 Discussion

Our analysis offers a clear account of the social costs and benefits of imposing a strict BBR. The social cost is less responsive public good provision and greater volatility in tax rates. The inability to run deficits means that the only way to respond to positive shocks in the value of the public good is to raise taxes. This leads to sharper tax hikes. Moreover, since the marginal cost of public funds is higher, public good provision incentives are dampened. The social benefit of a strict BBR is that the level of debt is reduced. While this reduction imposes short run costs, in the long run citizens benefit since debt starts out inefficiently high. The lower debt burden permits higher

average levels of public goods and lower taxes.

This account of the social cost of a strict BBR is consistent with the policy debate. The major drawback of a balanced budget amendment to the U.S. constitution stressed by opponents is that it reduces the federal government's ability to deal with emergency spending needs and/or unexpected revenue shortages. Emergency spending needs include wars, natural disasters, and the need to pump-prime the economy in recessions.²² Revenue shortages come from business cycle fluctuations. The inability of the government to run deficits in these circumstances is predicted to lead to inadequate federal spending and/or excessive taxation.²³

The account of the social benefit of a strict BBR is also consonant with the policy debate. Advocates of a balanced budget amendment certainly see the main goal as being to reduce the debt burden on the economy. However, the advantage of our analysis is that it spells out an explicit mechanism by which debt reduction occurs. The analysis is also useful in clarifying what happens to government taxes and spending. Many advocates seem to assume that a balanced budget amendment will lead to smaller government. If the size of government is measured by the tax rate, then our calibrated model suggests that on average this is true (see Table 3). Nonetheless, average spending on both public goods and pork will in fact increase. This suggests that if the true goal of a BBR is to reduce government spending, it should be supplemented by tax or spending limits.

The force leading to debt reduction in our analysis is that a BBR, by restricting future policies, increases the expected cost of taxation and increases legislators' incentive to save. It is worth noting that, in a growing economy, there will be an additional, purely mechanical, force driving down the debt/GDP ratio. A strict BBR, by banning deficits, amounts to a constraint that the current level of debt cannot exceed the initial level.²⁴ Accordingly, if GDP is growing, the debt/GDP ratio must fall even if debt is constant. Exactly how this force will combine with the force identified by our analysis is an open question, but the direction of the overall effect is

²² Typically, however, the amendments considered by the U.S. Congress specify that the BBR is to be automatically waived in times of war.

²³ Inadequate spending tends to be emphasized because the view is that political opposition to tax hikes will be higher than to spending cut-backs. This reflects the fact that federal spending programs are often targeted to particular sub-groups of the population, while taxes are paid by a broader group of citizens. In our model, all citizens are homogeneous in their preferences over public good provision and taxes and therefore these are always kept in balance.

²⁴ This is as opposed to a constraint that today's debt/GDP ratio cannot exceed tomorrow's. In some sense, a constraint that the debt/GDP ratio cannot grow seems a more natural rule to propose for a growing economy than a BBR (as argued by Paget (1996)). However, we are not aware of any serious proposal for such a rule.

unambiguous.

Our quantitative assessment of the relative size of the social costs and benefits is, of course, highly model dependent. It is interesting to give a sense of the strength of the forces at work, but it is not intended to be definitive. It is easy to think of factors that could substantially increase both the costs and the benefits of a BBR. On the cost side, if Keynesian pump-priming could prevent recessions from deepening, then cramping the federal government's ability to engage in it might indeed be very costly. On the benefit side, if reducing government debt would decrease interest rates and spur private investment and growth, then the benefits of government debt reduction could be much greater than suggested by our model.²⁵

Imposing a BBR with super-majority override will have no effect according to our analysis. This conclusion reflects the fact that once debt is at equilibrium levels, deficits are used to finance only public good spending and not targeted pork. They are therefore supported unanimously. Thus, while the equilibrium level of debt is excessive, deficits are, in a sense, not excessive in long run equilibrium. We suspect that this feature reflects the stationary nature of the underlying economy and would not be robust to including growth. In a growing economy, the debt level will likely grow over time even when the mwc is providing pork. Thus, rather than being an absolute level of debt, b^* would be the debt/GDP ratio that is chosen when the mwc provides pork. If GDP is increasing, then in order to maintain the debt/GDP ratio at b^* , the mwc will have to issue new debt and thereby run a deficit. But if the mwc needs super-majority approval to run a deficit, then it may be constrained in its ability to do so. Accordingly, we expect a BBR with override might have an effect. Of course, exactly what this effect will be is an open question.

Given the possible non-robustness of our result to introducing growth, we must be cautious in treating it as a definitive prediction. Nonetheless, we do feel that the result is useful in focusing attention on the question of exactly how a BBR is supposed to make a difference when it can be overridden by a super-majority of legislators. Advocates of a balanced budget amendment usually support an override to preserve some flexibility, but implicitly assume that a requirement to get the support of, say, 3/5ths of both Houses of Congress will have bite. Indeed, the discussion tends to focus on the concern that such a requirement might be too stringent and could lead to hold up problems with legislators demanding special projects for their districts in exchange for their votes.

²⁵ That said, these considerations would impact the equilibrium level of debt in the unconstrained case so that the change created by the BBR might be much less dramatic. Of course, this is why an equilibrium analysis such as ours is necessary to predict the impact of imposing a BBR.

The theoretical and/or empirical justification for these views is obscure and our result poses an interesting challenge to them.

8 Conclusion

This paper has made a first attempt to analyze the impact of a balanced budget amendment to the U.S. constitution. The framework for the analysis has been the political economy model of fiscal policy recently developed by Battaglini and Coate (2008). The paper has calibrated the BC model to the U.S. economy and has analyzed, qualitatively and quantitatively, the impact of imposing two different types of BBRs: a strict rule that cannot be circumvented by the legislature and a rule that can be overridden by a super-majority of legislators. We hope that the paper has contributed to the policy debate on the case for a balanced budget amendment, as well as advanced understanding of the strengths and weaknesses of the BC model as a framework for analyzing U.S. fiscal issues.

We feel that the analysis offers a reasonably compelling vision of the likely impact of a strict BBR. The key theoretical insight is that imposing a strict BBR will lead legislators to reduce existing debt levels. By restricting future policies, a BBR increases the expected cost of taxation and makes public savings more valuable. This reduction in debt has beneficial long run effects because it reduces the revenues that must be devoted to servicing the debt. These beneficial effects must be weighed against the costs of less responsive public good provision and more volatile tax rates. While we are less satisfied with the prediction of the analysis concerning the (non) impact of a BBR with a super-majority override, we do feel that it is useful in raising the question of exactly how such a BBR is supposed to make a difference. This is an important question which the policy debate has paid insufficient attention to.

In terms of future research, there is obviously much room for improvement in the analysis of this important policy problem. In our view, the obvious next step is to extend the BC model to include growth. Incorporating growth need not be done in a very sophisticated way to be valuable. Assuming, for example, that labor productivity is growing exogenously over time would be a good place to start. What is important is to preserve the tractability of the model and this will be a major challenge. But, if a tractable extension can be crafted, it would be very interesting to use it to revisit the case for a balanced budget amendment. We suspect that different conclusions concerning the impact of a BBR with super-majority override would emerge.

References

- Alt, J. and R. Lowry, (1994), "Divided Government and Budget Deficits: Evidence from the States," *American Political Science Review*, 88(4), 811-828.
- Azzimonti, M., deFrancisco, E. and P. Krusell, (2007), "Production Subsidies and Redistribution," *Journal of Economic Theory*, forthcoming.
- Barro, R., (1979), "On the Determination of the Public Debt," *Journal of Political Economy*, 87, 940-971.
- Bassetto, M. with T. Sargent, (2006), "Politics and Efficiency of Separating Capital and Ordinary Government Budgets," *Quarterly Journal of Economics*, 121(4), 1167-1210.
- Battaglini, M. and S. Coate, (2008), "A Dynamic Theory of Public Spending, Taxation and Debt," *American Economic Review*, 98(1), 201-236.
- Bayoumi, T. and B. Eichengreen, (1995), "Restraining Yourself: The Implications of Fiscal Rules for Economic Stabilization," *IMF Staff Papers*, 42, 32-48.
- Besley, T. and M. Smart, (2007), "Fiscal Restraints and Voter Welfare," *Journal of Public Economics*, 91, 755-773.
- Bohn, H. and R. Inman, (1996), "Balanced Budget Rules and Public Deficits: Evidence from the U.S. States," *Carnegie-Rochester Conference Series on Public Policy*, 45, 13-76.
- Braun, M., (1992), *Differential Equations and their Applications*, 4th Edition, New York: Springer-Verlag.
- Brennan, G. and J. Buchanan, (1980), *The Power to Tax: Analytical Foundations of a Fiscal Constitution*, Cambridge: Cambridge University Press.
- Buchanan, J., (1995), "Clarifying Confusion about the Balanced Budget Amendment," *National Tax Journal*, 48, 347-355.
- Buchanan, J. and R. Wagner, (1977), *Democracy in Deficit: The Political Legacy of Lord Keynes*, New York: Academic Press.
- Chari, V.V., L. Christiano and P. Kehoe, (1994), "Optimal Fiscal Policy in a Business Cycle Model," *Journal of Political Economy*, 102(4), 617-652.
- Cooley, T. and E. Prescott, (1995), "Economic Growth and Business Cycles," in Cooley, T. ed, *Frontiers of Business Cycle Research*, Princeton: Princeton University Press.
- Corsetti, G. and N. Roubini, (1996) "European and American Perspectives on Balanced-Budget Rules," *American Economic Review*, 86(2), 408-413.
- Greenwood, J., Z. Hercowitz and G. Huffman, (1988), "Investment, Capacity Utilization, and the Real Business Cycle," *American Economic Review*, 78, 402-417.
- Hall, G., J. Krieger and M. Gertler, (2000), "The Tax Smoothing Implications of the Federal Debt Paydown," *Brookings Papers on Economic Activity*, 2, 253-301.
- Hou, Y. and D. Smith, (2006), "A Framework for Understanding State Balanced Budget Requirement Systems: Reexamining Distinctive Features and an Operational Definition," *Public Budgeting and Finance*, 26(3), 22-45.

- Inman, R., (1996), "Do Balanced Budget Rules Work? U.S. Experience and Possible Lessons for the EMU," NBER Working Paper #5838.
- Keech, W., (1985) "A Theoretical Analysis of the Case for a Balanced Budget Amendment," *Policy Sciences*, 18, 157-168.
- Lucas, R. and N. Stokey, (1983), "Optimal Fiscal and Monetary Policy in an Economy without Capital," *Journal of Monetary Economics*, 12, 55-93.
- Marcet, A. and A. Scott, (2001), "Debt and Deficit Fluctuations and the Structure of Bond Markets," mimeo, Universitat Pompeu Fabra.
- Morgan, I., (1998), "Unconventional Politics: The Campaign for a Balanced-Budget Amendment Constitutional Convention in the 1970s," *Journal of American Studies*, 32, 421-455.
- Niskanen, W., (1992), "The Case for a New Fiscal Constitution," *Journal of Economic Perspectives*, 6(2), 13-24.
- Paget, K., (1996), "The Balanced Budget Trap," *The American Prospect*, 29, 21-29.
- Poterba, J., (1994), "State Responses to Fiscal Crises: The Effects of Budgetary Institutions and Politics," *Journal of Political Economy*, 102, 799-821.
- Poterba, J., (1995), "Balanced Budget Rules and Fiscal Policy: Evidence from the States," *National Tax Journal*, 48(3), 329-336.
- Poterba, J., (1996), "Budget Institutions and Fiscal Policy in the U.S. States," *American Economic Review*, 86(2), 395-400.
- Poterba, J. and J. von Hagen, eds., (1999), *Fiscal Rules and Fiscal Performance*, Chicago: University of Chicago Press.
- Primo, D., (2007), *Rules and Restraint: Government Spending and the Design of Institutions*, Chicago: University of Chicago Press.
- Rose, S., (2006), "Do Fiscal Rules Dampen the Political Business Cycle," *Public Choice*, 128, 407-431.
- Sabato, L., (2007), *A More Perfect Constitution*, New York: Walker Publishing Company.
- Savage, J., (1988), *Balanced Budgets and American Politics*, Ithaca: Cornell University Press.
- Schmitt-Grohe, S. and M. Uribe, (1997), "Balanced-Budget Rules, Distortionary Taxes, and Aggregate Instability," *Journal of Political Economy*, 105(5), 976-1000.
- Schick, A., (2007), *The Federal Budget: Politics, Policy, Process*, Washington: Brookings Institution Press.
- Stockman, D., (2001), "Balanced-Budget Rules: Welfare Loss and Optimal Policies," *Review of Economic Dynamics*, 4, 438-459.
- von Hagen, J., (2002), "Fiscal Rules, Fiscal Institutions, and Fiscal Performance," *Economic and Social Review*, 33(3), 263-284.
- Whalen, C., (1995), "The Balanced Budget Amendment: Toxic, not Tonic," mimeo, The Jerome Levy Economics Institute of Bard College.

9 Appendix

9.1 Proof of Proposition 4

We begin by characterizing what the function $b_c^*(b)$ must look like in a well-behaved equilibrium.

Using Proposition 3, we can write the equilibrium value function as:

$$v_c(b, A) = \begin{cases} \max_{(\tau, g)} \left\{ \begin{array}{l} u(\tau) + A \ln g + \frac{B(\tau, g, b, b)}{n} + \delta E v_c(b, A') \\ : B(\tau, g, b, b) \geq 0 \end{array} \right\} & \text{if } A > \widehat{A}(b) \\ \max_{(\tau, g, b')} \left\{ \begin{array}{l} u(\tau) + A \ln g + \frac{B(\tau, g, b', b)}{n} + \delta E v_c(b', A') \\ : B(\tau, g, b', b) \geq 0 \end{array} \right\} & \text{if } A \in [A^*(b, b_c^*(b)), \widehat{A}(b)] \\ u(\tau^*) + A \ln \frac{qA}{p} + \frac{B(\tau^*, \frac{qA}{p}, b_c^*(b), b)}{n} + \delta E v_c(b_c^*(b), A') & \text{if } A < A^*(b, b_c^*(b)), \end{cases} \quad (21)$$

where $\widehat{A}(b)$ is the threshold (possibly larger than \bar{A}) such that for $A \geq \widehat{A}(b)$ the BBR constraint that the debt level be less than b will bind. In this top range, the initial debt level will directly determine the debt level chosen next period. Using this and the assumption that the equilibrium is well-behaved, we have that

$$\frac{\partial v_c(b, A)}{\partial b} = \begin{cases} - \left(\frac{1 - \tau_b(A)}{1 - \tau_b(A)(1 + \varepsilon)} \right) \left(\frac{\rho}{n} \right) + \delta E \frac{\partial v_c(b, A')}{\partial b} & \text{if } A > \widehat{A}(b) \\ - \left(\frac{1 - \tau_c(b, A)}{1 - \tau_c(b, A)(1 + \varepsilon)} \right) \left(\frac{1 + \rho}{n} \right) & \text{if } A \in [A^*(b, b_c^*(b)), \widehat{A}(b)] \\ \left(\frac{db_c^*(b)/db - (1 + \rho)}{n} \right) + \delta E \frac{\partial v_c(b_c^*(b), A')}{\partial b} \frac{db_c^*(b)}{db} & \text{if } A < A^*(b, b_c^*(b)). \end{cases} \quad (22)$$

Taking expectations, we obtain

$$\begin{aligned} -\delta n E \frac{\partial v_c(b, A)}{\partial b} &= G(A^*(b, b_c^*(b))) \delta \left[1 + \rho - \frac{db_c^*(b)}{db} - n \delta E \frac{\partial v_c(b_c^*(b), A')}{\partial b} \frac{db_c^*(b)}{db} \right] \\ &\quad + \int_{A^*(b, b_c^*(b))}^{\min\{\bar{A}, \widehat{A}(b)\}} \left(\frac{1 - \tau_c(b, A)}{1 - \tau_c(b, A)(1 + \varepsilon)} \right) dG(A) \\ + \int_{\min\{\bar{A}, \widehat{A}(b)\}}^{\bar{A}} &\left(\frac{1 - \tau_b(A)}{1 - \tau_b(A)(1 + \varepsilon)} \right) dG(A) (1 - \delta) - \delta^2 n E \frac{\partial v_c(b, A)}{\partial b} (1 - G(\min\{\bar{A}, \widehat{A}(b)\})). \end{aligned} \quad (23)$$

Now let b_0 and b_1 be as defined in (14) and (15). As explained in the text, we must have that b_0 is less than b_1 . We now characterize the end point b_0 . When $b < b_0$, we know that $b_c^*(b) = b$ and hence that $\frac{db_c^*(b)}{db} = 1$. Moreover, since $b_c^*(b) = b$, we have that $\widehat{A}(b) = A^*(b, b)$ and so we can rewrite (23) as:

$$-\delta n E \frac{\partial v_c(b, A)}{\partial b} = G(A^*(b, b)) + \int_{A^*(b, b)}^{\bar{A}} \left(\frac{1 - \tau_b(A)}{1 - \tau_b(A)(1 + \varepsilon)} \right) dG(A). \quad (24)$$

Since $\frac{b'}{q} + \delta Ev_c(b', A')$ is constant on the interval $[b_0, b_1]$, the right hand derivative of the value function at b_0 and the left hand derivative at b_1 must be $1/q$. Since the expected value function is differentiable, then, we must have that at b_0 the left hand side derivative (which is given by (24)) is $1/q$ implying that

$$G(A^*(b_0, b_0)) + \int_{A^*(b_0, b_0)}^{\bar{A}} \left(\frac{1 - \tau_{b_0}(A)}{1 - \tau_{b_0}(A)(1 + \varepsilon)} \right) dG(A) = \frac{n}{q}.$$

This is (18).

The next step is to characterize $b_c^*(b)$ on the interval $[b_0, b_1]$. If $\frac{b}{q} + \delta Ev_c(b, A')$ is constant on the interval $[b_0, b_1]$ we must have that

$$-\delta n E \frac{\partial v_c(b, A)}{\partial b} = \frac{n}{q}, \quad (25)$$

for any $b \in [b_0, b_1]$. Since $E \frac{\partial v_c(b, A)}{\partial b}$ is a function of $b_c^*(b)$ and its derivative, (25) implies a differential equation that needs to be satisfied by $b_c^*(b)$ along with the initial condition $b_c^*(b_0) = b_0$. Using (23), we can show that this condition requires that $b_c^*(b)$ in $[b_0, b_1]$ is equal to a function $f(b)$ that solves the differential equation:

$$\begin{aligned} \frac{n}{q} &= G(A^*(b, f(b))) \left[1 - \frac{df(b)}{db} \delta \left(1 - \frac{n}{q} \right) \right] \\ &+ \left(\frac{n}{q} \right) (1 - \delta) G(A^*(b, b)) - \left(\frac{n}{q} \right) G(A^*(b, f(b))) + \int_{A^*(b, b)}^{\bar{A}} \left(\frac{1 - \tau_b(A)}{1 - \tau_b(A)(1 + \varepsilon)} \right) dG(A) (1 - \delta) + \delta \frac{n}{q}, \end{aligned}$$

with the initial condition $f(b_0) = b_0$. This is (19). Note that if this condition is satisfied, then any point in $[b_0, b]$ would be a legitimate choice for $b_c^*(b)$ when $b \in [b_0, b_1]$. We are therefore free to choose $b_c^*(b)$ as we like - in particular, $b_c^*(b) = f(b)$. By Theorem 2' in Braun (1992) (p.77), $f(b)$ is uniquely defined on $[b_0, \bar{b}]$.

The final step is to pin down the end point of the interval b_1 . Because $b_c^*(b)$ is non decreasing and bounded in $[b_0, b_1]$, it must be constant and equal to $f(b_1)$ for debt levels b larger than b_1 . Using (23) and the fact that $\frac{db_c^*(b)}{db} = 0$ for b greater than b_1 we have that:

$$\begin{aligned} -\delta n E \frac{\partial v_c(b, A)}{\partial b} &= \frac{G(A^*(b, b_c^*(b))) + \int_{A^*(b, b_c^*(b))}^{\min\{\bar{A}, \hat{A}(b)\}} \left(\frac{1 - \tau_c(b, A)}{1 - \tau_c(b, A)(1 + \varepsilon)} \right) dG(A)}{1 - \delta(1 - G(\min\{\bar{A}, \hat{A}(b)\}))} \\ &+ \int_{\min\{\bar{A}, \hat{A}(b)\}}^{\bar{A}} \left(\frac{1 - \tau_b(A)}{1 - \tau_b(A)(1 + \varepsilon)} \right) dG(A) (1 - \delta). \end{aligned} \quad (26)$$

for b greater than b_1 . The same logic used to pin down b_0 can now be used for b_1 : at b_1 we need the right hand side derivative (given by (26)) equal to $1/q$. This implies that b_1 must satisfy:

$$\frac{n}{q}(1 - \delta) = \frac{n}{q}(1 - \delta) G(A^*(b_1, b_1)) - \left(\frac{n}{q} - 1 \right) G(A^*(b_1, f(b_1))) + \int_{A^*(b_1, b_1)}^{\bar{A}} \left(\frac{1 - \tau_{b_1}(A)}{1 - \tau_{b_1}(A)(1 + \varepsilon)} \right) dG(A) (1 - \delta).$$

This is (20).

We now have a full characterization of the $b_c^*(b)$ function in a well-behaved equilibrium. Notice that for a given $b_c^*(b)$ function, (13) is a contraction with a unique fixed-point. Thus, since $b_c^*(b)$ is uniquely defined, there exists a unique well-behaved equilibrium. ■

9.2 Proof of Proposition 5

Note first from (13) and (17) that $b'_c(b_0, A) = b_0$ for all A so that b_0 is a steady state. The key step is therefore to show that the equilibrium level of debt must converge down to the level b_0 . Let $\widehat{b} \in [b^*, \bar{b})$ denote the debt level that is prevailing when the BBR is imposed. Since the BBR implies that debt can never go up, what we need to show is that for any $b \in (b_0, \widehat{b}]$ the probability that debt remains at b goes to zero as t goes to infinity.

Given an initial debt level $b \in [b_0, \widehat{b}]$, let $H^m(b, b')$ denote the probability that in m periods debt will be less than $b' \in [b_0, b]$ given the equilibrium debt policy function $b'_c(b_0, A)$. Suppose that we could show that for any initial $b \in (b_0, \widehat{b}]$ there exists an $\varepsilon > 0$ and an integer m such that $H^m(b, b_c^*(b))$ exceeds ε . Then we could conclude that for any $b \in (b_0, \widehat{b}]$ the probability that debt remains at b goes to zero as t goes to infinity. To prove this, choose any $b \in (b_0, \widehat{b}]$ and let $\varsigma > 0$. Then we need to show that there exists some t_ς such that the probability that debt is equal to b after t_ς periods is less than ς . But we know that after $t \cdot m$ periods the probability that debt will equal b will be less than $[1 - H^m(b, b_c^*(b))]^t < (1 - \varepsilon)^t$. By choosing t_ς such that $(1 - \varepsilon)^{t_\varsigma/m} \leq \varsigma$ we obtain the desired result.

We now establish:

Claim 1: For any $b \in (b_0, \widehat{b}]$, there exists an $\varepsilon > 0$ and an integer m such that $H^m(b, b_c^*(b)) \geq \varepsilon$.

Proof: For any $b \in [b_0, \widehat{b}]$ and $A \in [\underline{A}, \overline{A}]$ define the sequence $\langle \phi_m(b, A) \rangle_{m=1}^\infty$ inductively as follows: $\phi_0(b, A) = b$ and $\phi_{m+1}(b, A) = b'_c(\phi_m(b, A), A)$. Thus, $\phi_m(b, A)$ is the equilibrium level of debt if the debt level were b at time 0 and the shock was A in periods 1 through m .

Recall that, by assumption, there exists some positive constant $\xi > 0$, such that for any pair of realizations satisfying $A < A'$, the difference $G(A') - G(A)$ is at least as big as $\xi(A' - A)$. This implies that for any $b \in [b_0, \widehat{b}]$, $H^m(b, \phi_m(b, \underline{A} + \lambda)) - H^m(b, \phi_m(b, \underline{A})) \geq \xi^m \lambda^m$ for all λ such that $0 < \lambda < \overline{A} - \underline{A}$. To see this, let $\mathbf{A} = (A_1, A_2, \dots, A_k, \dots)$ be a countable vector of shocks such that $A_j \in [\underline{A}, \underline{A} + \lambda]$ for all $j = 1, \dots, \infty$, and for all m let $\mathbf{A}^m = (A_1, A_2, \dots, A_m)$ be the list of the first m elements. Define also the sequence $\langle \phi_m(b, \mathbf{A}^m) \rangle_{m=1}^\infty$ inductively as follows: $\phi_1(b, \mathbf{A}^1) = b'_c(b, A_1)$

and $\phi_{k+1}(b, \mathbf{A}^{k+1}) = b'_c(\phi_k(b, \mathbf{A}^k), A_{k+1})$. Clearly $\phi_1(b, \mathbf{A}^1) \in (\phi_1(b, \underline{A}), \phi_1(b, \underline{A} + \lambda))$. Assume that $\phi_k(b, \mathbf{A}^k) \in (\phi_k(b, \underline{A}), \phi_k(b, \underline{A} + \lambda))$, then, since $b'_c(b, A)$ is increasing in b and A :

$$\begin{aligned} \phi_{k+1}(b, \mathbf{A}^{k+1}) &\in (b'_c(\phi_k(b, \underline{A}), A_{k+1}), b'_c(\phi_k(b, \underline{A} + \lambda), A_{k+1})) \\ &\subset (b'_c(\phi_k(b, \underline{A}), \underline{A}), b'_c(\phi_k(b, \underline{A} + \lambda), \underline{A} + \lambda)) \\ &= (\phi_{k+1}(b, \underline{A}), \phi_{k+1}(b, \underline{A} + \lambda)) \end{aligned}$$

It follows that $\phi_{k+1}(b, \mathbf{A}^{k+1}) \in (\phi_{k+1}(b, \underline{A}), \phi_{k+1}(b, \underline{A} + \lambda))$. This implies that after m periods, if the initial state is b and if there are m sequential shocks $A_j \in [\underline{A}, \underline{A} + \lambda]$, then debt will certainly be in $(\phi_m(b, \underline{A}), \phi_m(b, \underline{A} + \lambda))$. The probability that after m periods, if the initial state is b , debt is in $(\phi_m(b, \underline{A}), \phi_m(b, \underline{A} + \lambda))$ must therefore be larger than the probability of m sequential shocks $A_j \in [\underline{A}, \underline{A} + \lambda]$. This probability is at least $(\xi\lambda)^m$.

Given this, to prove the Claim it suffices to show that there exists an integer m such that $A^*(\phi_m(b, \underline{A}), b_c^*(b)) > \underline{A}$. If this is the case by continuity there is a $\lambda_m(b) > 0$ small enough such that $A^*(\phi_m(b, \underline{A} + \lambda_m(b)), b_c^*(b)) > \underline{A}$. It then follows that

$$\begin{aligned} H^m(b, b_c^*(b)) &= \int_z H^1(z, b_c^*(b)) dH^{m-1}(b, z) \\ &\geq \int_{\phi_m(b, \underline{A})}^{\phi_m(b, \underline{A} + \lambda_m(b))} H^1(z, b_c^*(b)) dH^{m-1}(b, z) \\ &\geq H^1(\phi_m(b, \underline{A} + \lambda_m(b)), b_c^*(b)) [H^{m-1}(b, \phi_{m-1}(b, \underline{A} + \lambda_m(b))) - H^{m-1}(b, \phi_{m-1}(b, \underline{A}))] \\ &\geq H^1(\phi_m(b, \underline{A} + \lambda_m(b)), b_c^*(b)) (\xi\lambda_m(b))^{m-1} > 0. \end{aligned}$$

The third inequality follows from the facts that $H^1(b, b')$ is non-increasing in b and $\phi_m(b, \underline{A} + \lambda_m(b)) \geq \phi_m(b, \underline{A})$.

It remains to show that there exists an integer m such that $A^*(\phi_m(b, \underline{A}), b_c^*(b)) > \underline{A}$. Suppose, to the contrary, that for all m we have that $A^*(\phi_m(b, \underline{A}), b_c^*(b)) \leq \underline{A}$. To simplify notation, let $\phi_m = \phi_m(b, \underline{A})$ for all m . The BBR implies that for all m , $\phi_{m-1} \geq \phi_m$. We can therefore assume without loss of generality that the sequence $\langle \phi_m \rangle$ converges to some finite limit $\phi_\infty \geq b_0$. Since $A^*(\phi_m, b_c^*(b)) \leq \underline{A}$ and $\phi_m \leq b$, we know that $G(A^*(\phi_m, b_c^*(\phi_m))) = 0$. Thus from (23) we have that for all m

$$-\delta n E \frac{\partial v_c(\phi_m, A)}{\partial b} = \frac{\int_{\underline{A}}^{\min\{\bar{A}, \hat{A}(\phi_m)\}} \left(\frac{1 - \tau_c(\phi_m, A)}{1 - \tau_c(\phi_m, A)(1 + \varepsilon)} \right) dG(A) + \int_{\min\{\bar{A}, \hat{A}(\phi_m)\}}^{\bar{A}} \left(\frac{1 - \tau_{\phi_m}(A)}{1 - \tau_{\phi_m}(A)(1 + \varepsilon)} \right) dG(A)(1 - \delta)}{1 - \delta(1 - G(\min\{\bar{A}, \hat{A}(\phi_m)\}))}.$$

But we know that it must be the case that

$$\frac{\tau_c(\phi_m, \underline{A})}{1 - \tau_c(\phi_m, \underline{A})(1 + \varepsilon)} \geq -\delta n E \frac{\partial v_c(\phi_{m+1}, A)}{\partial b}$$

where the inequality is strict if the BBR is binding. This means that

$$\frac{\tau_c(\phi_m, \underline{A})}{1 - \tau_c(\phi_m, \underline{A})(1 + \varepsilon)} \geq \frac{\int_{\underline{A}}^{\min\{\bar{A}, \hat{A}(\phi_m)\}} \left(\frac{1 - \tau_c(\phi_{m+1}, A)}{1 - \tau_c(\phi_{m+1}, A)(1 + \varepsilon)}\right) dG(A) + \int_{\min\{\bar{A}, \hat{A}(\phi_m)\}}^{\bar{A}} \left(\frac{1 - \tau_{\phi_m}(A)}{1 - \tau_{\phi_m}(A)(1 + \varepsilon)}\right) dG(A)(1 - \delta)}{1 - \delta(1 - G(\min\{\bar{A}, \hat{A}(\phi_m)\}))}$$

where the inequality is strict if the BBR is binding. Note however that if ϕ_{m+1} is sufficiently close to ϕ_m then since $\tau_c(b, A)$ and $\tau_b(A)$ are increasing in A and

$$1 - \delta(1 - G(\min\{\bar{A}, \hat{A}(\phi_m)\})) < 1,$$

the right hand side must be strictly larger than the left hand side, a contradiction. We conclude therefore that for m sufficiently large $A^*(\phi_m(b, \underline{A}), b_c^*(b)) > \underline{A}$, which yields the result. ■

The description of what the policies would be at the steady state debt level b_0 follows the characterization following Proposition 3. ■

9.3 Proof of Proposition 6

We first show that the average primary surplus at the steady state debt level b_0 is less than the average primary surplus in the long run in the unconstrained equilibrium. The primary surplus is the difference between tax revenues and spending on the public good and pork. In the unconstrained equilibrium, using the budget constraint, we may write this as $PS(b, A) = (1 + \rho)b - b'(b, A)$. Let $EPS(b) = \int PS(b, A) dG(A)$. Let $H(b, b')$ be the transition function implied by the unconstrained equilibrium; that is, the probability that in the next period the initial level of debt will be less than or equal to $b' \in [b^*, \bar{b})$ if the current level is b . Let $\psi(b)$ denote the long run equilibrium debt distribution. This satisfies the condition that

$$\psi(b') = \int_b H(b, b') d\psi(b).$$

(For the details see Battaglini and Coate (2008)). Then we have that the average primary surplus in the long run in the unconstrained equilibrium is

$$\int_{b^*}^{\bar{b}} EPS(b) d\psi(b) = (1 + \rho)E(b) - \int_{b^*}^{\bar{b}} b' d\psi(b') = \rho E(b)$$

From Proposition 5, we know that the average primary surplus in the steady state under a strict BBR is just ρb_0 . We also know that $b_0 < b^*$. Thus we have that

$$\int_{b^*}^{\bar{b}} EPS(b) d\psi(b) = \rho E(b) > \rho b^* > \rho b_0,$$

as required.

We next show that the average level of pork-barrel spending at the steady state debt level b_0 is larger than the average amount of pork-barrel spending in the long run in the unconstrained equilibrium. By Proposition 5, average pork-barrel spending at the steady state debt level b_0 is given by

$$\int_{\underline{A}}^{A^*(b_0, b_0)} B(\tau^*, g^*(A), b_0, b_0) dG(A).$$

Average pork-barrel spending in the long run in the unconstrained equilibrium is

$$\int_{b^*}^{\bar{b}} \left\{ \int_{\underline{A}}^{A^*(b, b^*)} B(\tau^*, g^*(A), b^*, b) dG(A) \right\} d\psi(b),$$

where $\psi(b)$ is the invariant distribution. We have that

$$\begin{aligned} \int_{b^*}^{\bar{b}} \left\{ \int_{\underline{A}}^{A^*(b, b^*)} B(\tau^*, g^*(A), b^*, b) dG(A) \right\} d\psi(b) &\leq \int_{\underline{A}}^{A^*(b^*, b^*)} B(\tau^*, g^*(A), b^*, b^*) dG(A) \\ &< \int_{\underline{A}}^{A^*(b_0, b_0)} B(\tau^*, g^*(A), b_0, b_0) dG(A), \end{aligned}$$

where the last inequality follows from the fact that $b_0 < b^*$. ■